



# Data for the Chinese loess and paleosols

Hyodo, Masayuki

---

**(Citation)**

Journal of Geophysical Research

**(Issue Date)**

2020

**(Resource Type)**

dataset

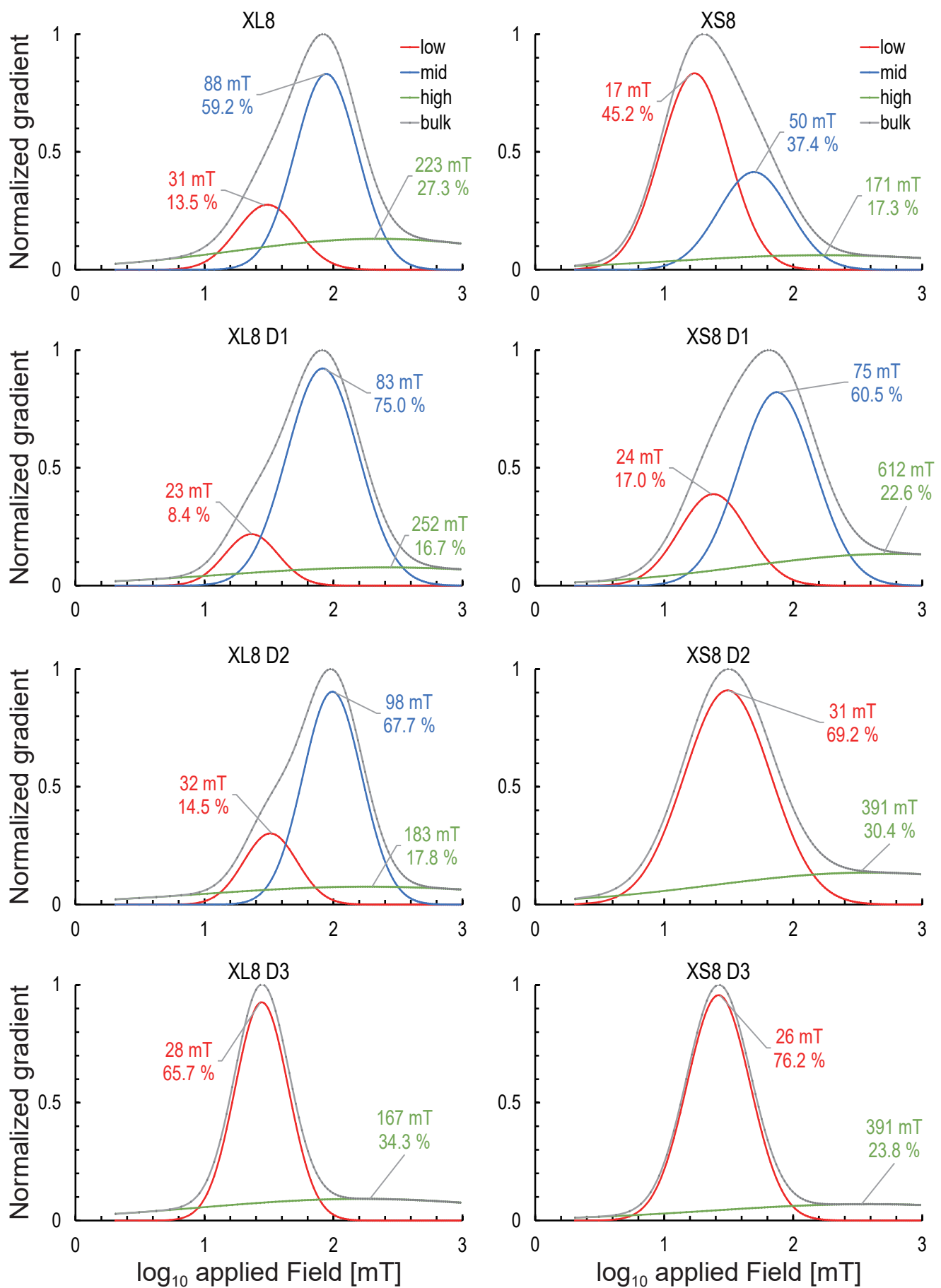
**(Version)**

Accepted Manuscript

**(URL)**

<https://hdl.handle.net/20.500.14094/90006813>





**Figure R1.** Results of isothermal remanent magnetization (IRM) component analyses for the bulk, D1, D2, and D3 samples of the XL8 loess and XS8 paleosol fractions. The low, medium, and high  $B_{1/2}$  components are indicated by red, blue, and green curves, respectively. The gradient maxima (mT) and contribution (%) toward IRM saturation are also shown.  $B_{1/2}$ : the field at which half of the IRM saturation is reached (Heslop *et al.*, 2002).