



Data for the Chinese loess and paleosols

Hyodo, Masayuki

(Citation)

Journal of Geophysical Research

(Issue Date)

2020

(Resource Type)

dataset

(Version)

Accepted Manuscript

(URL)

<https://hdl.handle.net/20.500.14094/90006813>



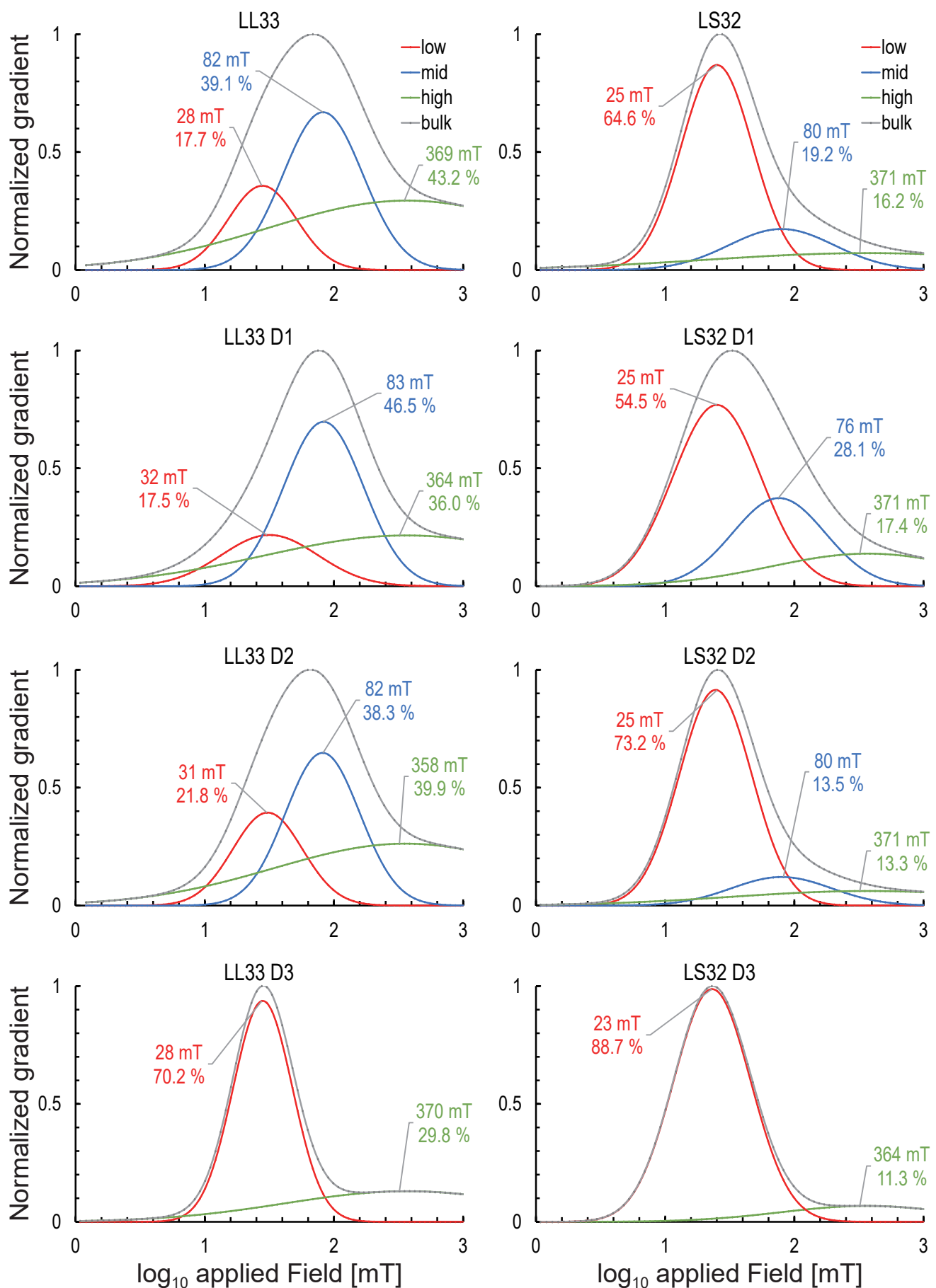


Figure R2. Results of isothermal remanent magnetization (IRM) component analyses for the bulk, D1, D2, and D3 samples of the LL33 loess and LS32 paleosol fractions. The low, medium, and high $B_{1/2}$ components are indicated by red, blue, and green curves, respectively. The gradient maxima (mT) and contribution (%) toward IRM saturation are also shown. $B_{1/2}$: the field at which half of the IRM saturation is reached (Heslop *et al.*, 2002).