



Data base of Histology Color slides

Mizoguchi, Fumio

(Issue Date)

2015-05-04

(Resource Type)

learning object

(Version)

Version of Record

(Rights)

1. 利用者による利用の範囲は、著作権法に定める私的利用の範囲とする。2. 研究成果を利用者が利用した結果について、許諾者はその責任を負わない。
私的利用の範囲を超える二次利用（印刷物、ウェブサイト、発表資料等への転載など）については、利用希望者は附属図書館（<https://lib.kobe-u.ac.jp/da/secondaryuse/#secondaryuse-...>）

(URL)

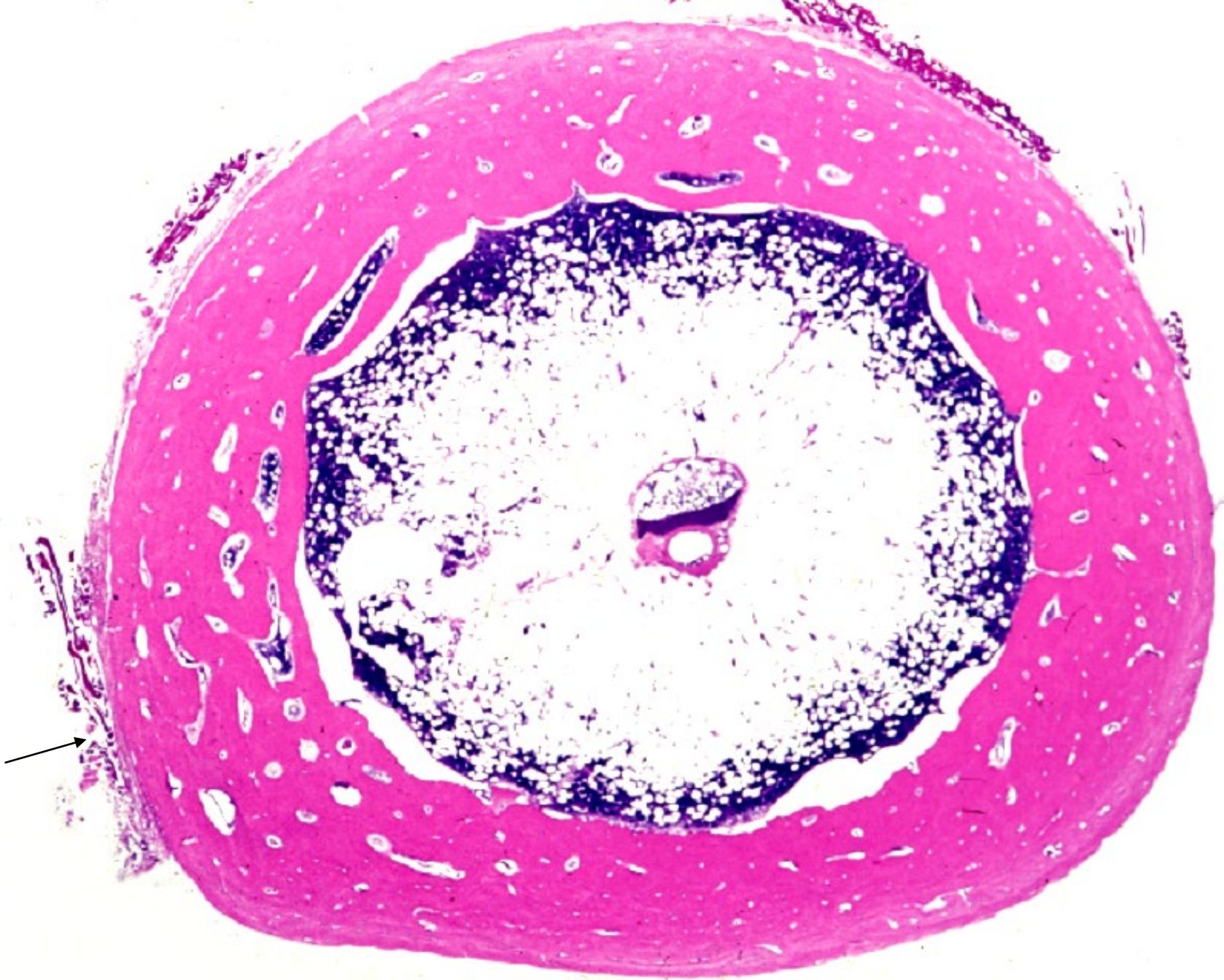
<https://hdl.handle.net/20.500.14094/90009617>



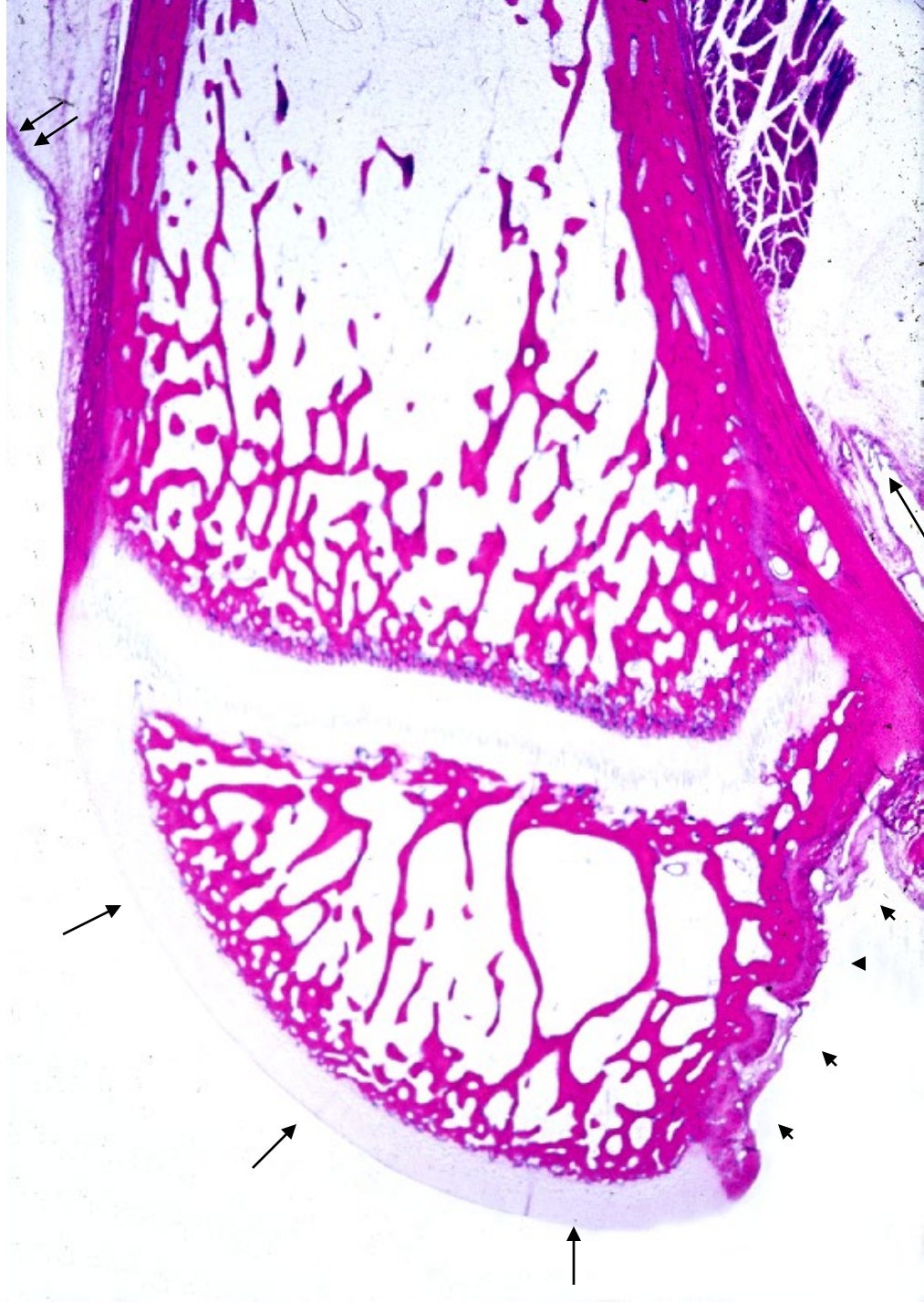


08

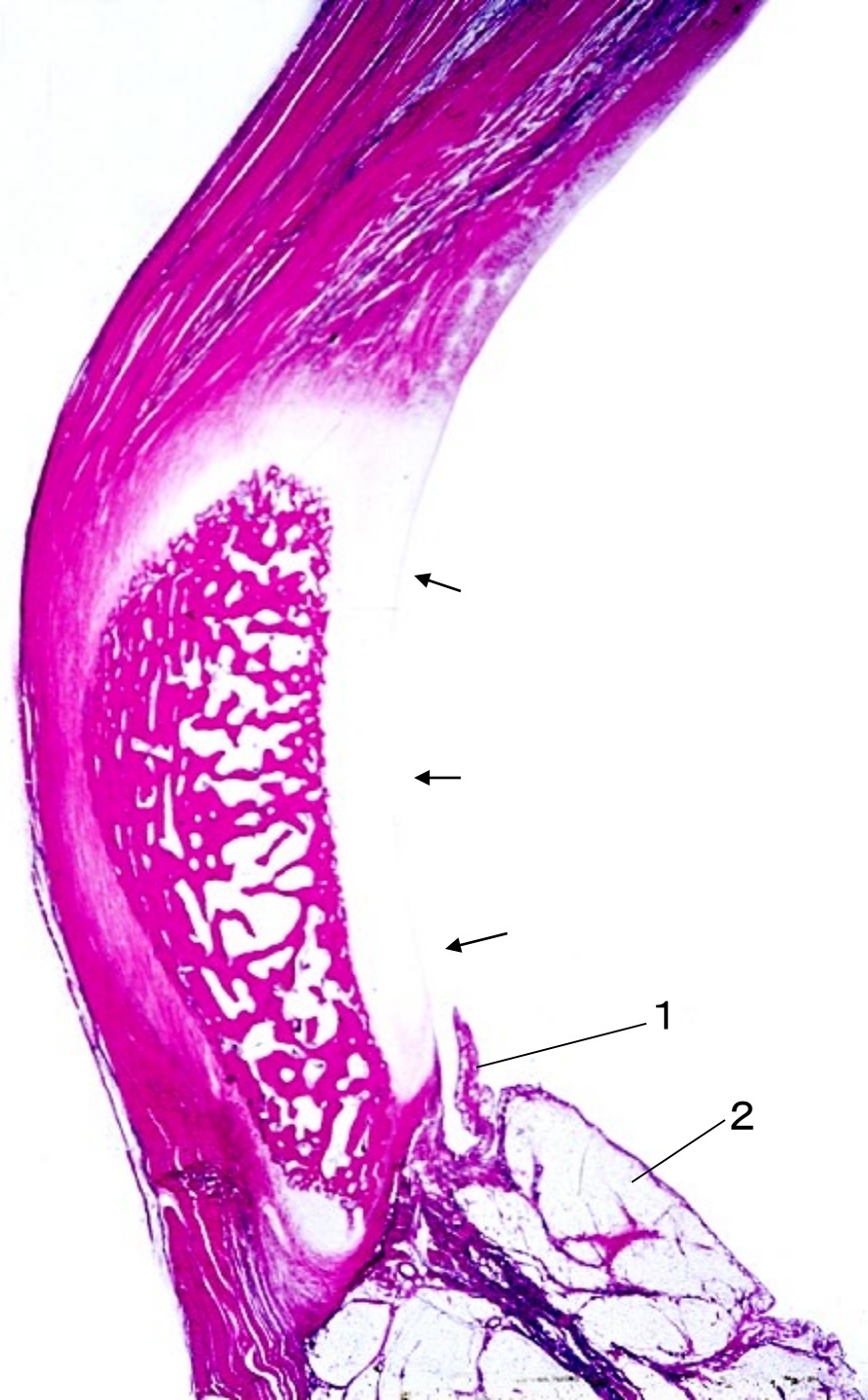
Bone and Joint



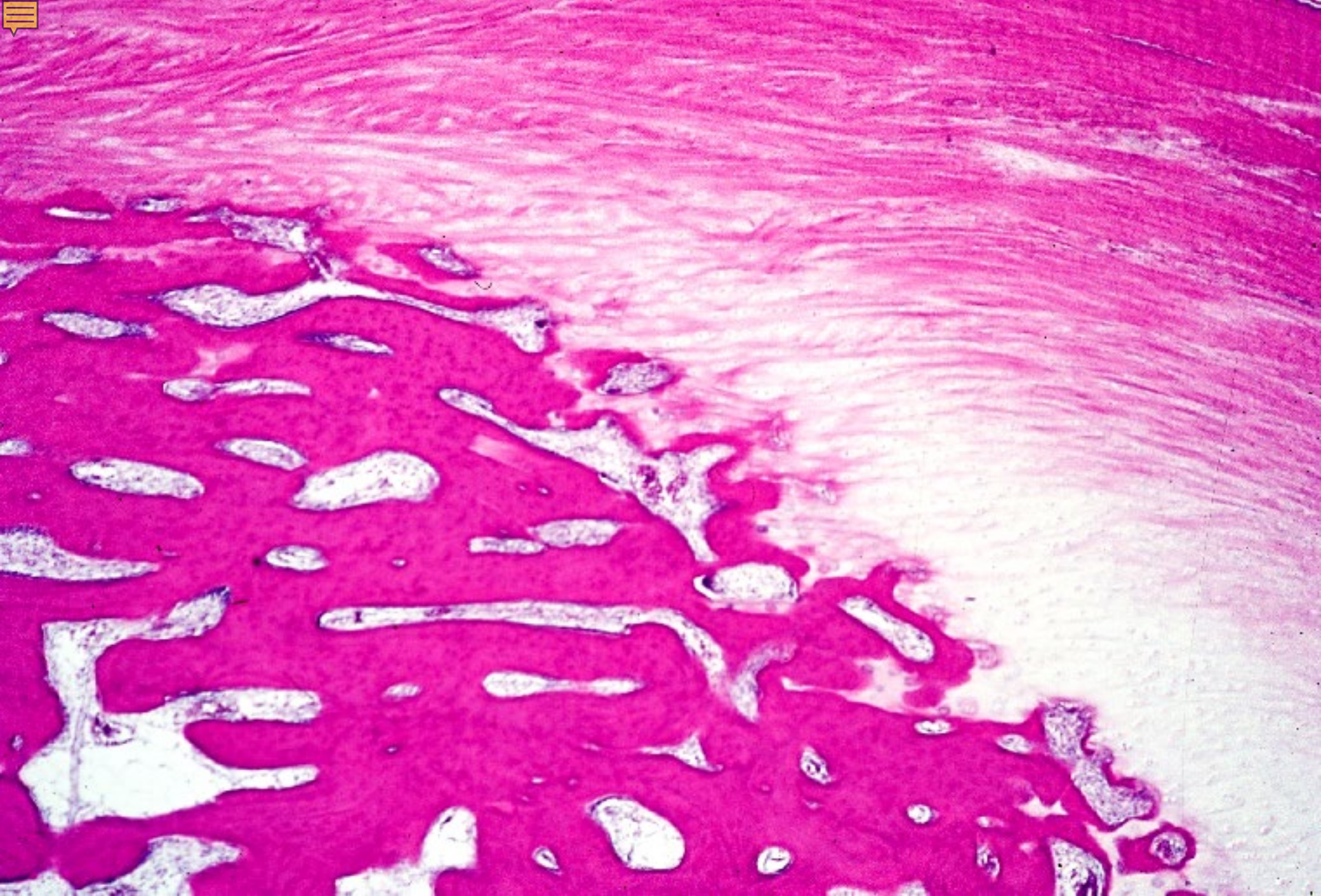
08-01. Femur, transverse section. Monkey, H-E stain, x 2.5.



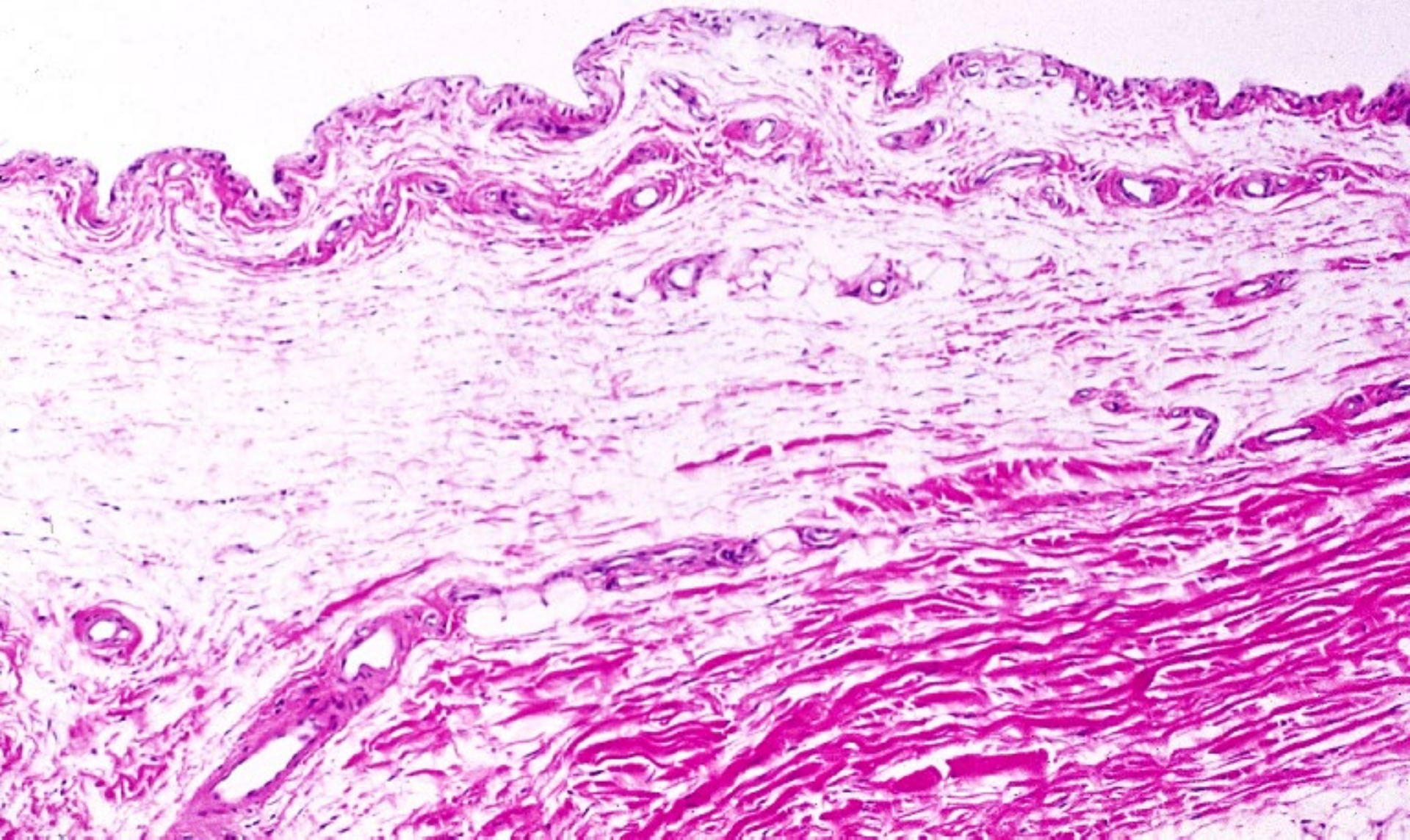
08-02.
Distal end of femur,
sagittal section.
Monkey,
H-E stain,
x 1.3.



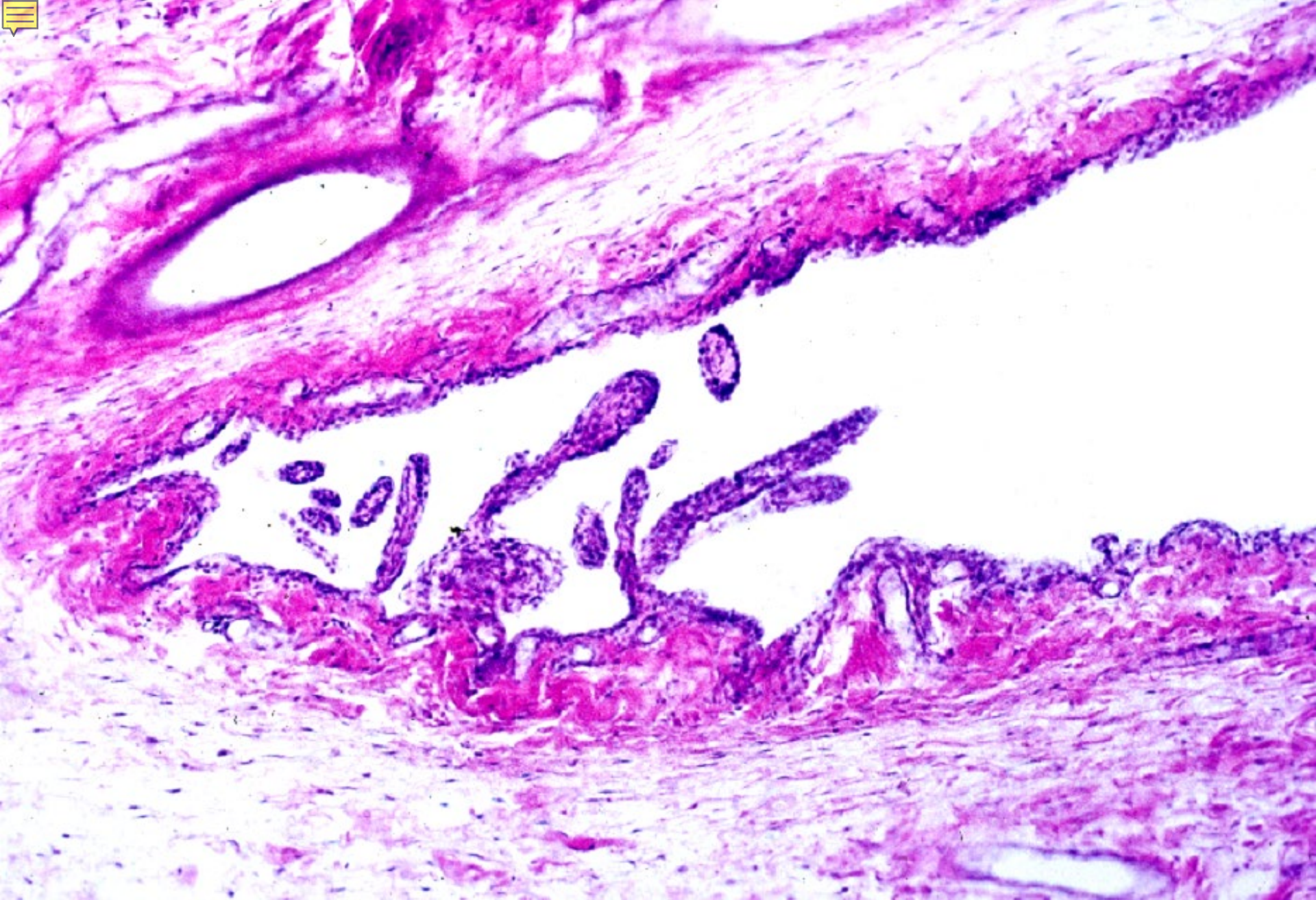
08-03.
Patella,
sagittal section.
Monkey,
H-E stain,
x 1.3.



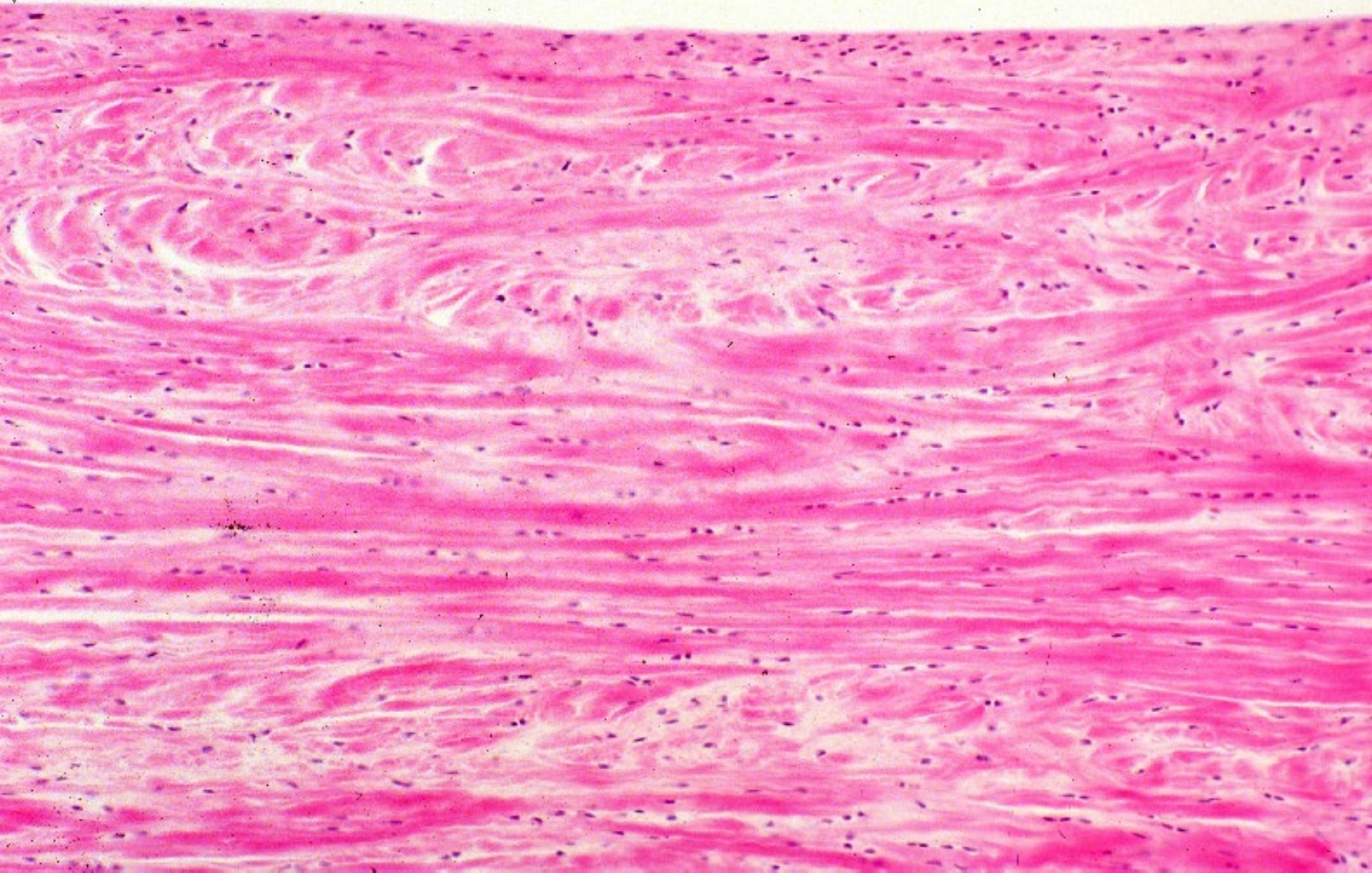
08-04. Transition from tendon, cartilage and bone, longitudinal section. Monkey, H-E stain, x 10.



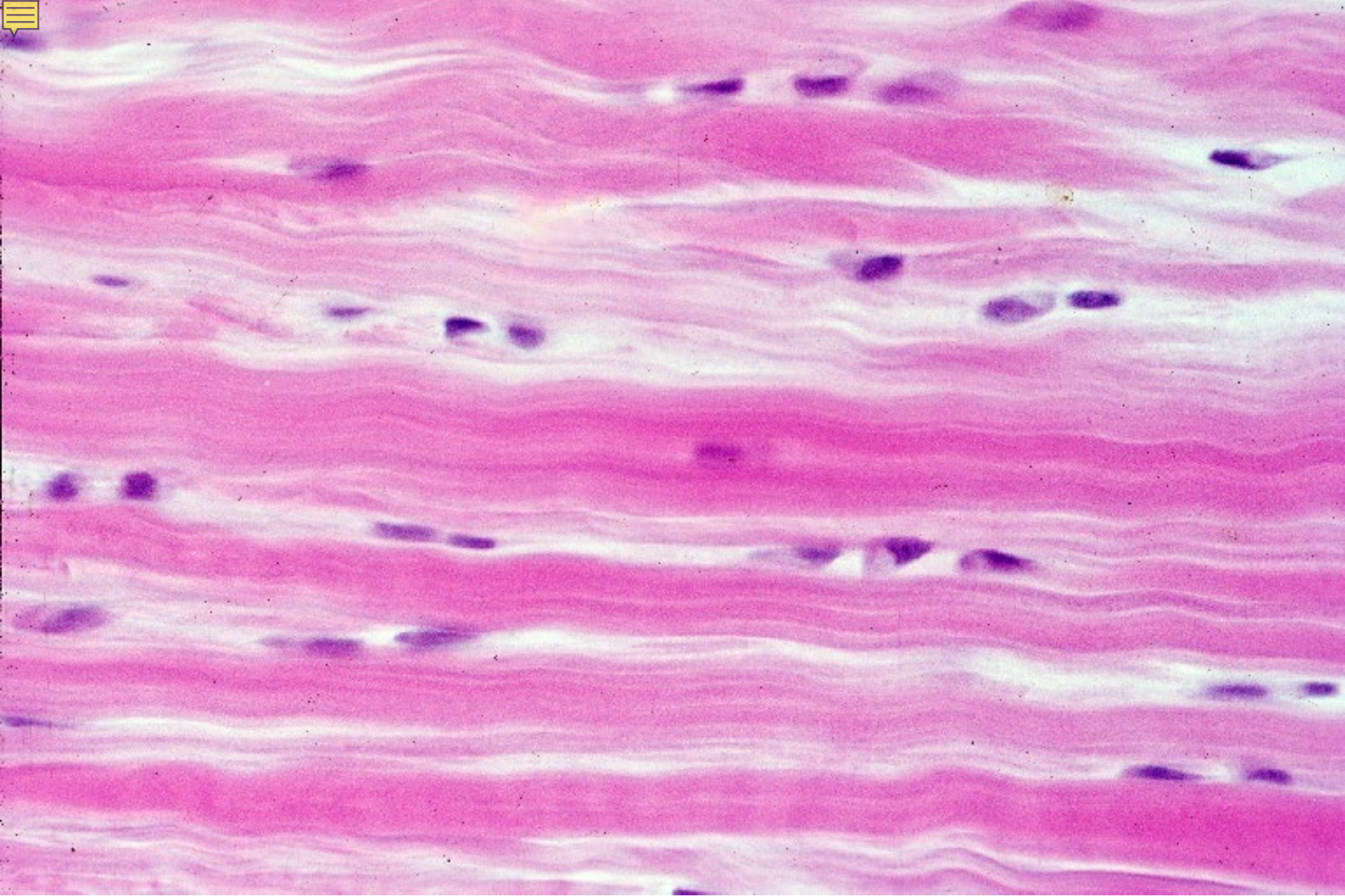
08-05. Synovial membrane. Monkey, H-E stain, x 25.



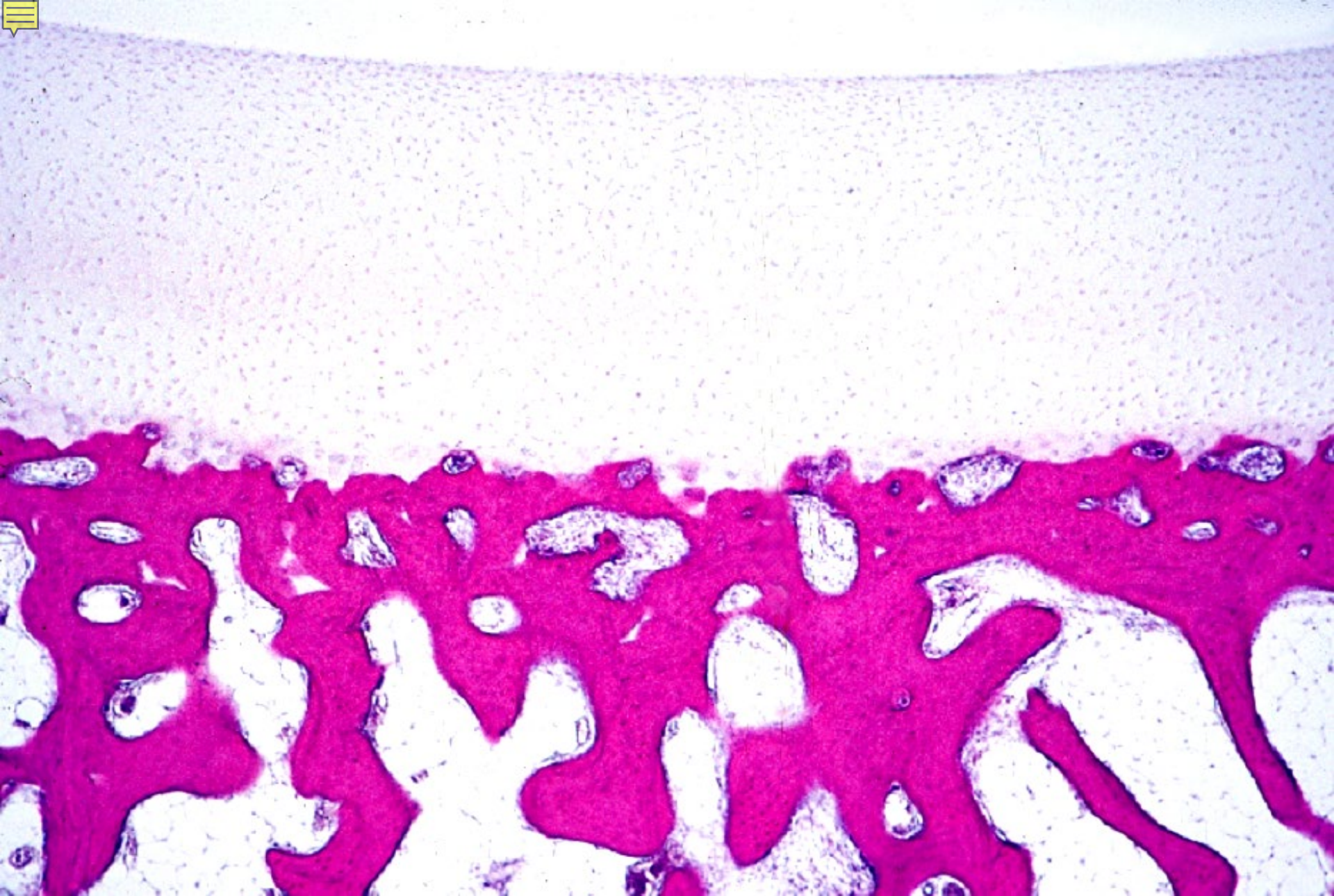
08-06. Synovial villi. Monkey, H-E stain, x 25.



08-07. Meniscus articularis 1. Monkey, H-E stain, x 66.



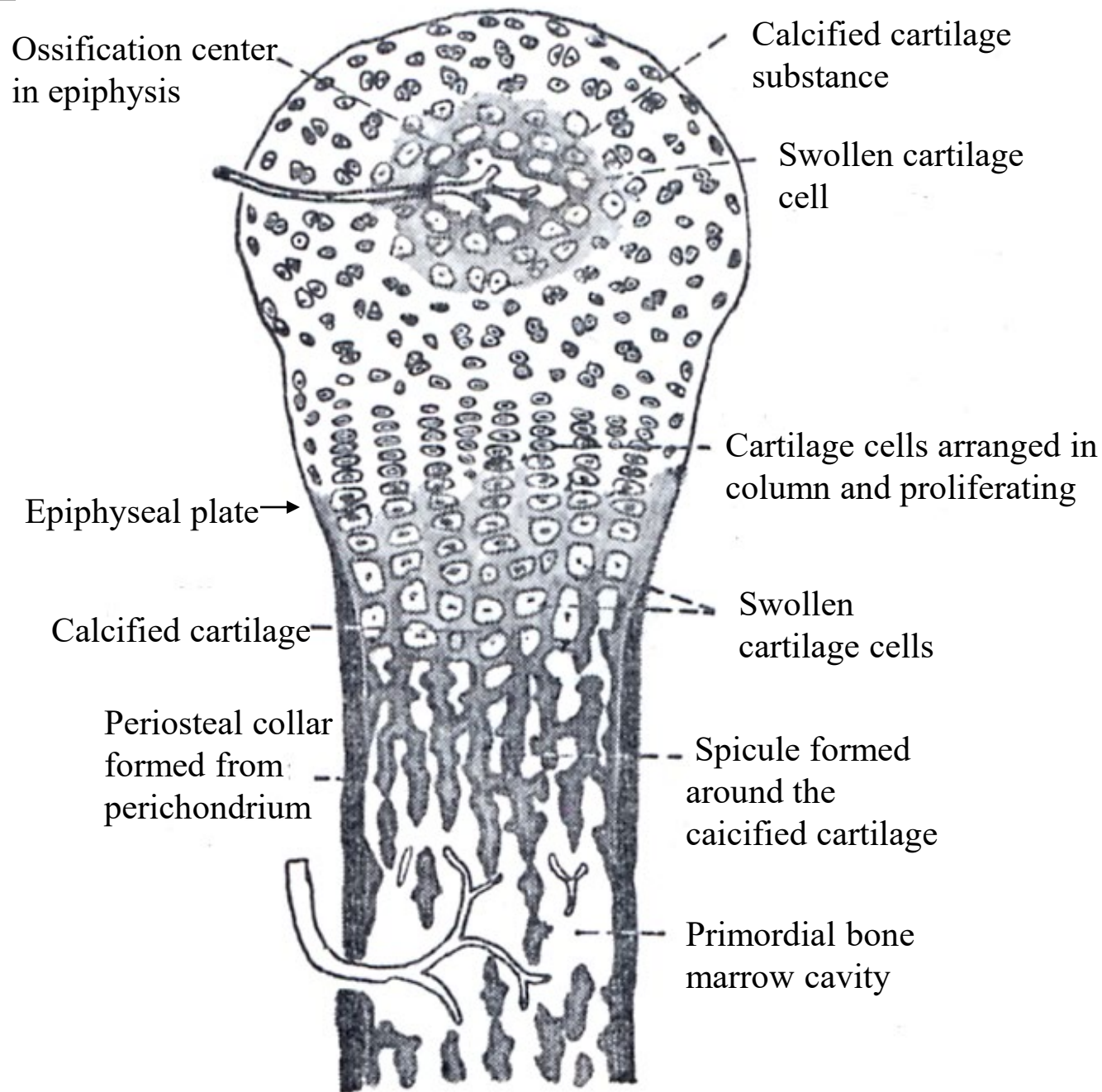
08-08. Meniscus articularis. Monkey, H-E stain, x 160.



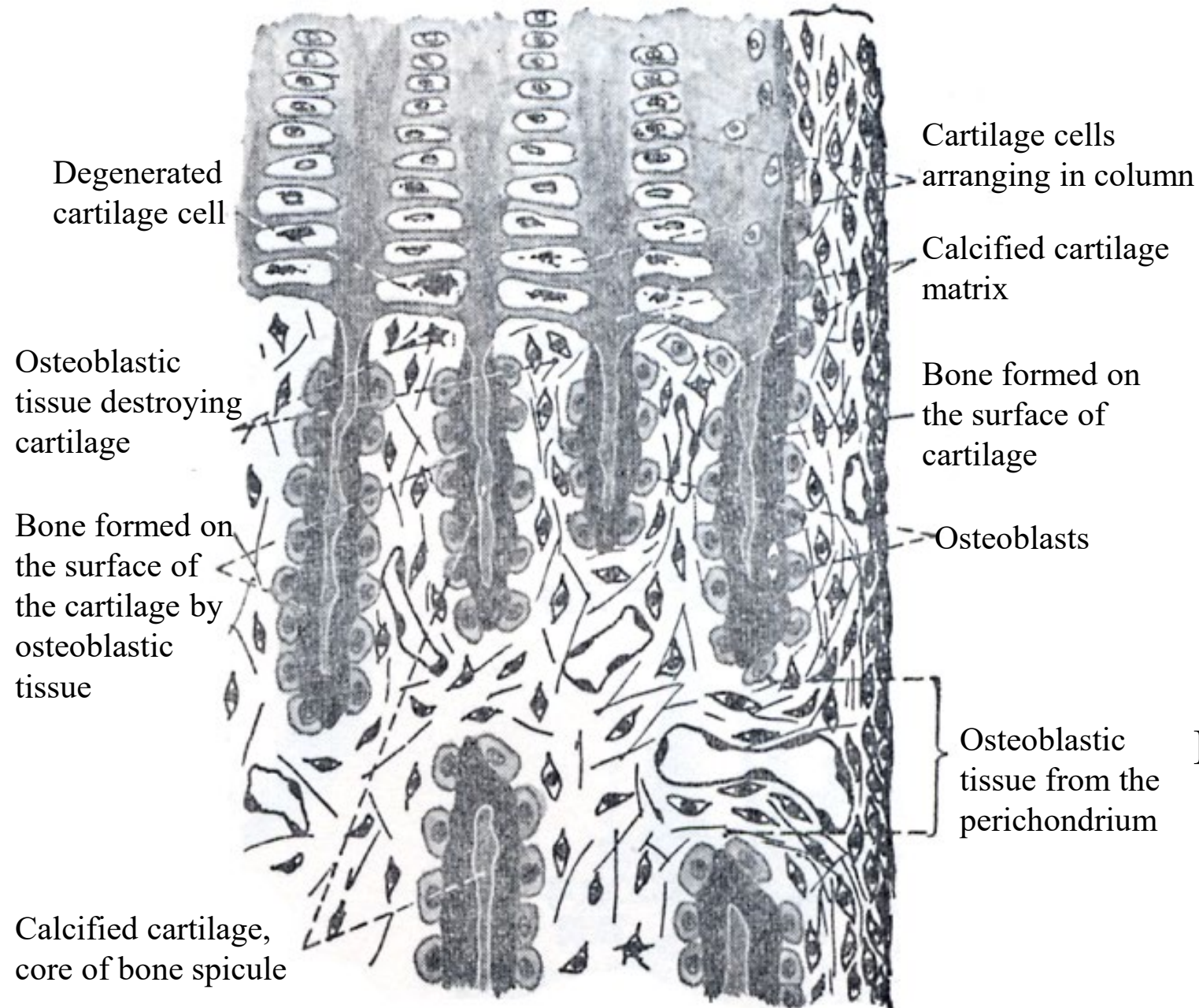
08-09. Cartilago articularis. Monkey, H-E stain, x 10.



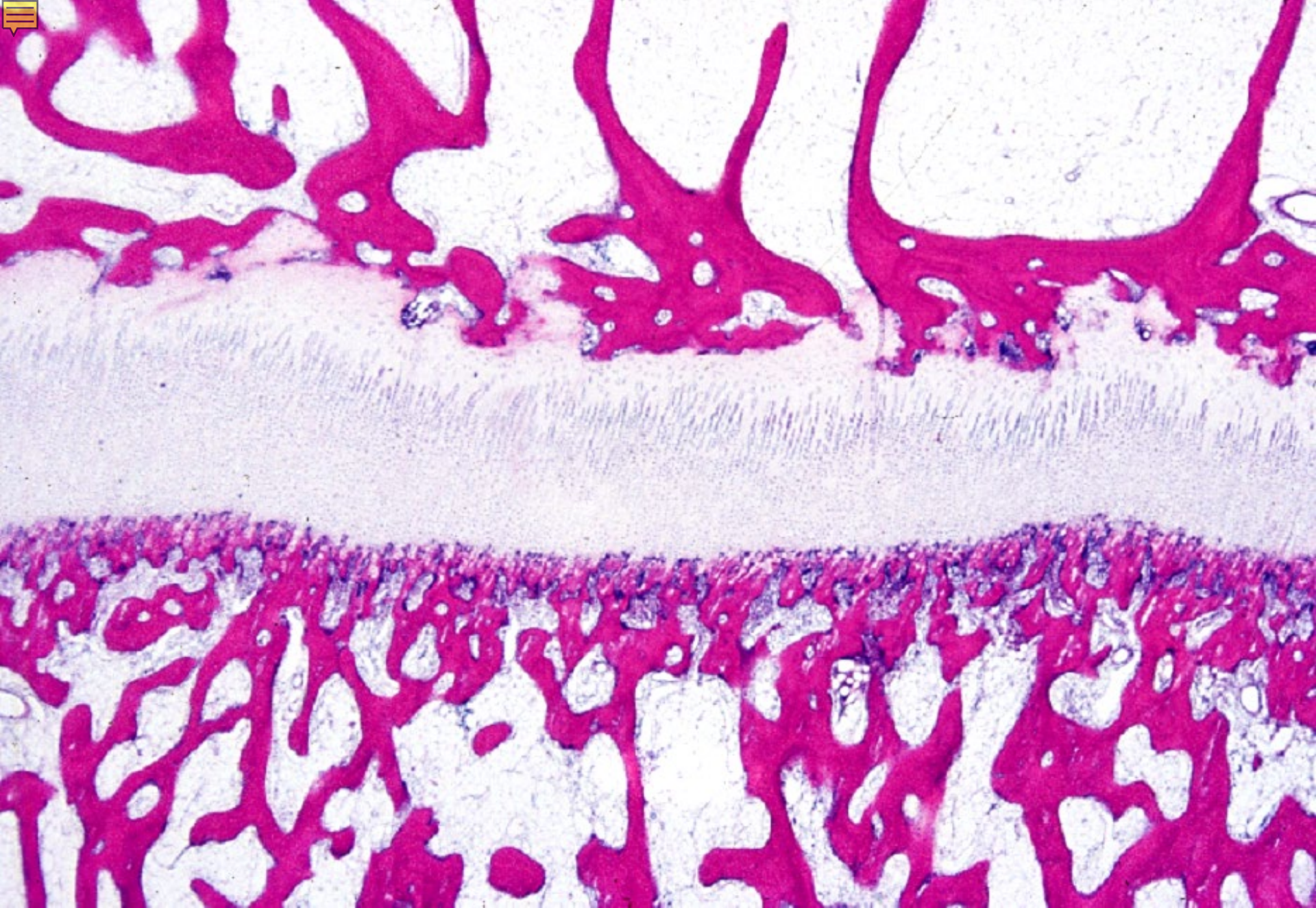
08-10. Periosteum and bone. Monkey, H-E stain, x 66.



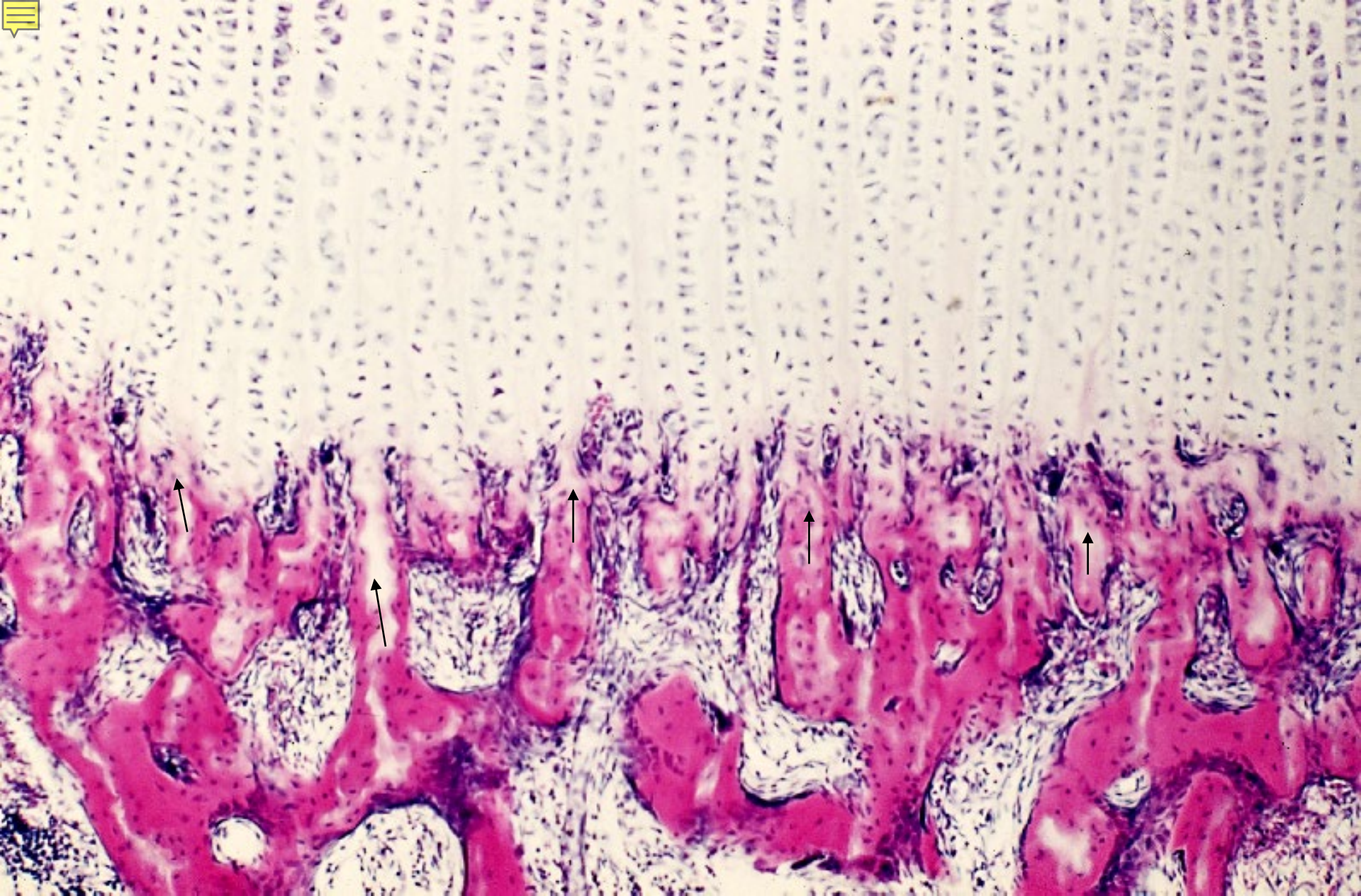
08-11.
Development of
long tubular bone
1.
(Scheme)



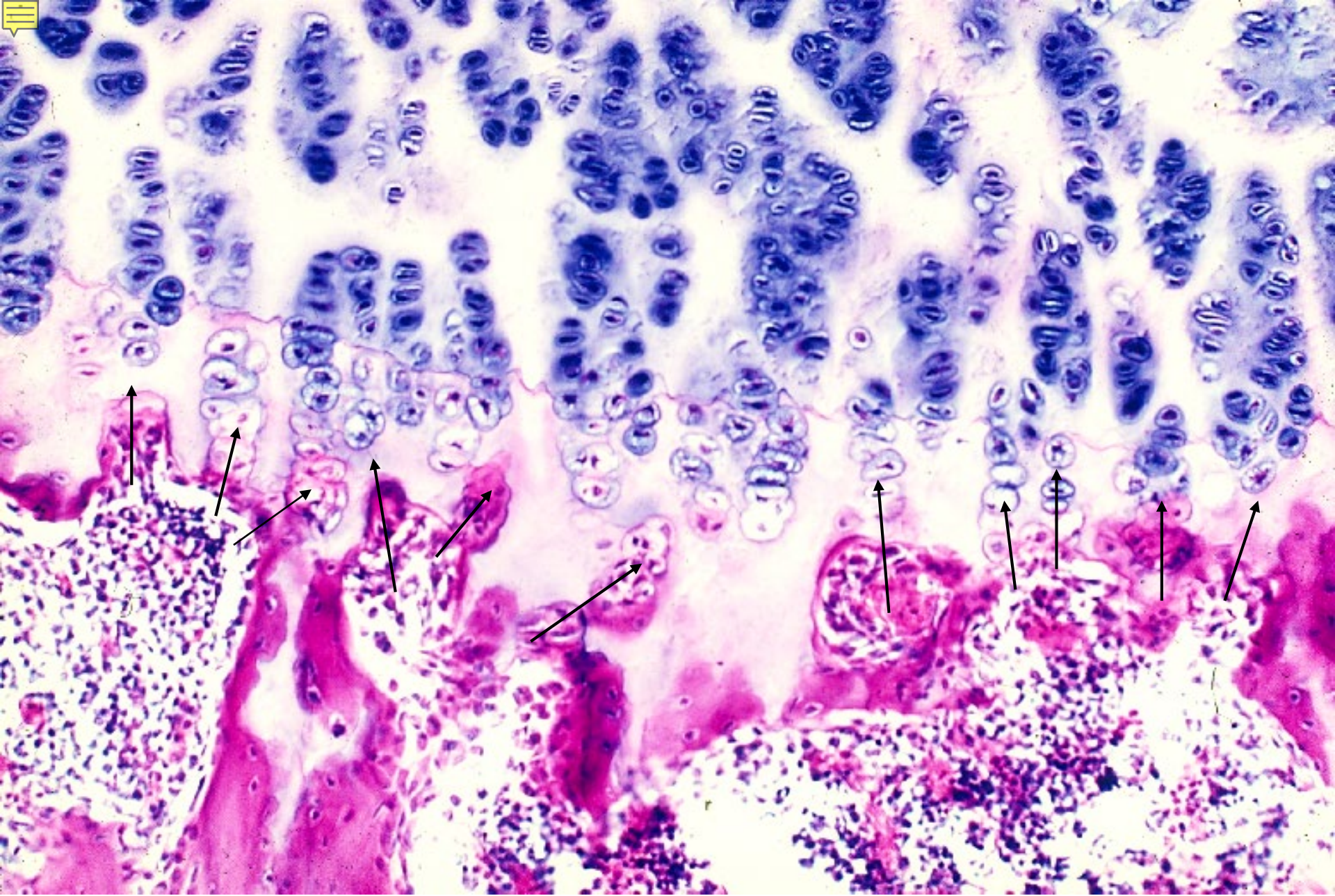
08-12.
Development
of long
tubular bone
2.
(Scheme).



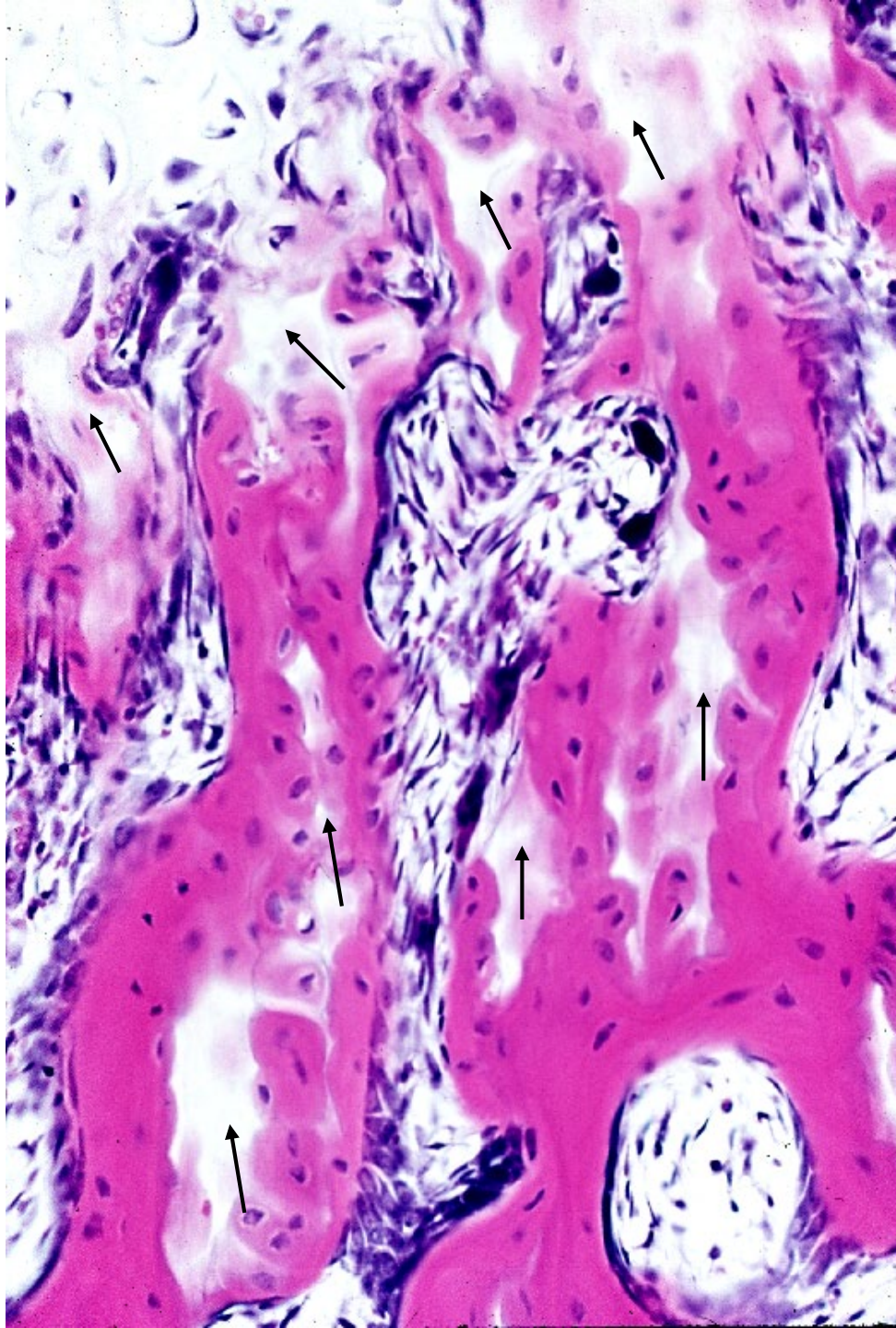
08-13. Epiphyseal plate 1. Monkey, H-E stain, x 4.



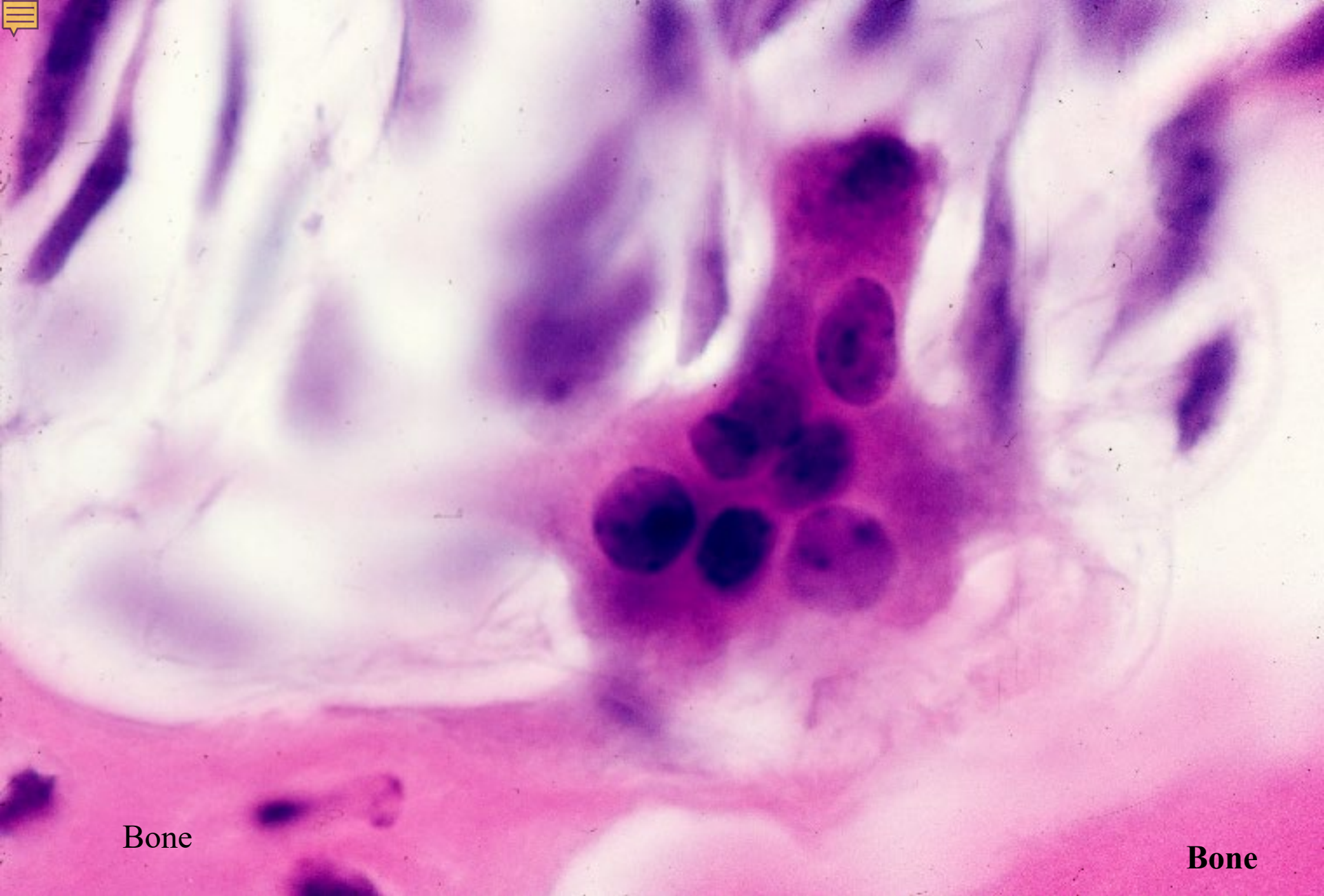
08-14. Epiphyseal plate 2. Monkey, H-E stain, x 25.



08-15. Epiphyseal plate 3. Monkey, H-E stain, x 40.



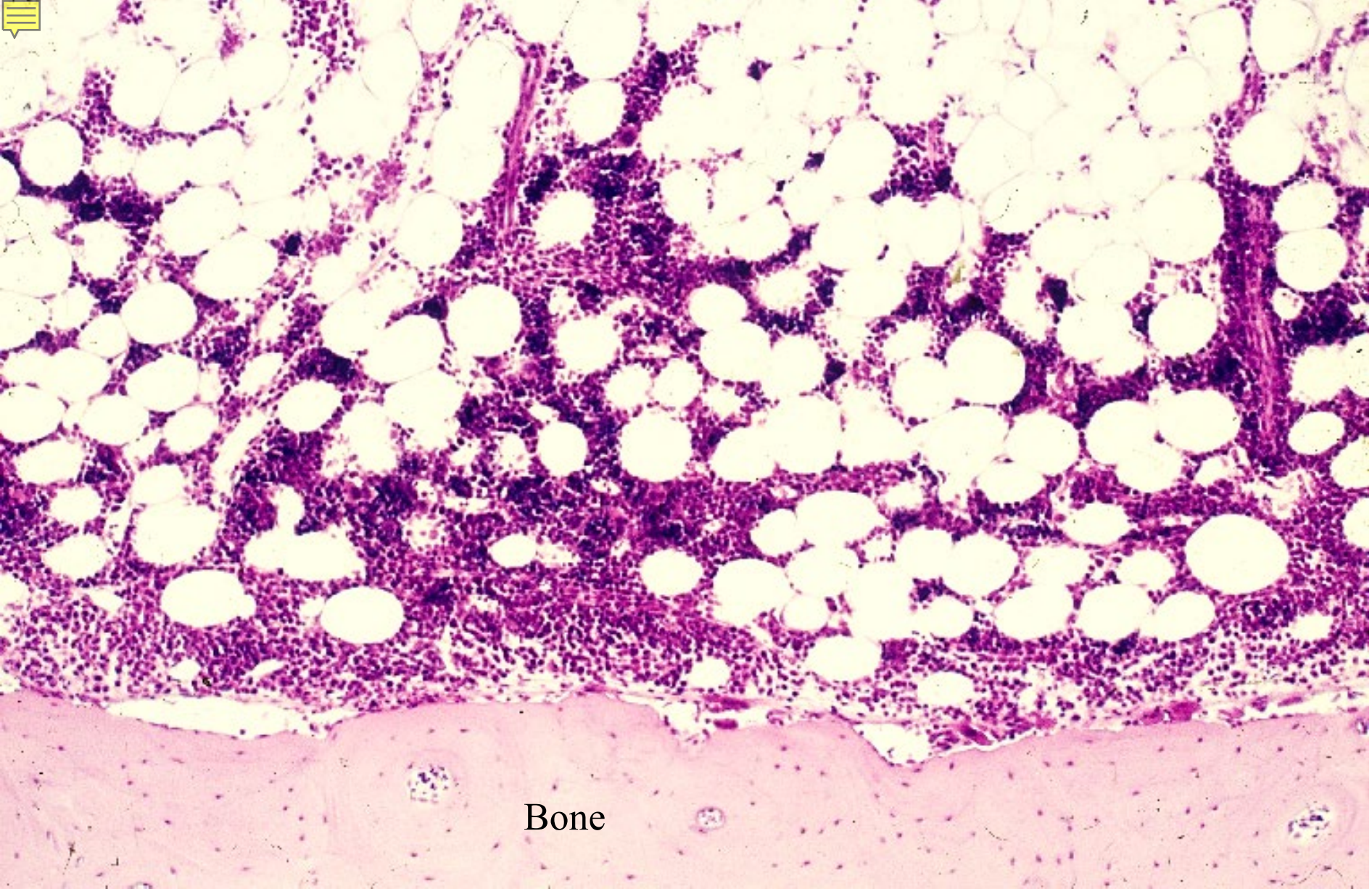
08-16.
Osteoblastic tissue.
Monkey,
H-E stain,
x 64.



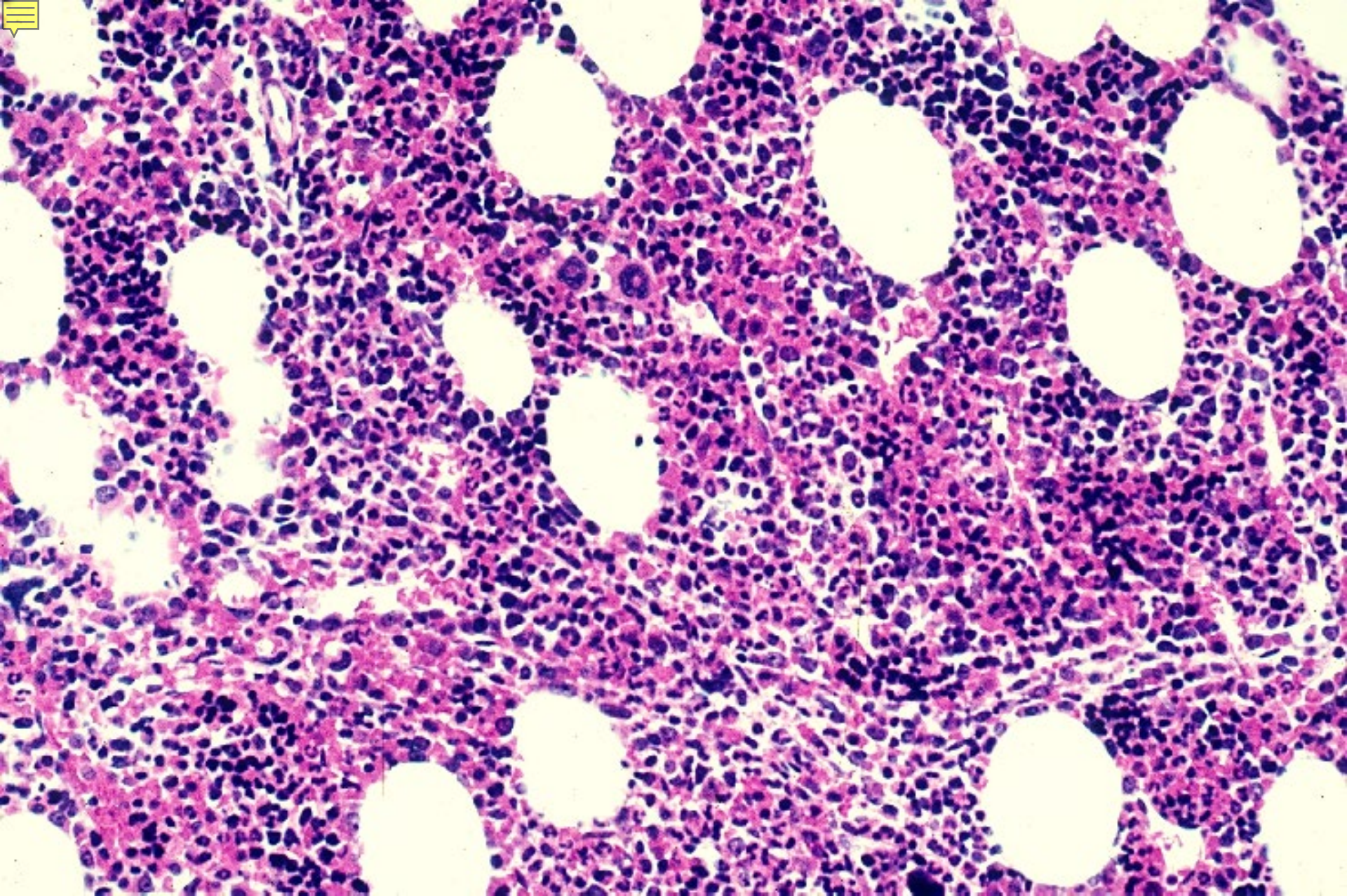
Bone

Bone

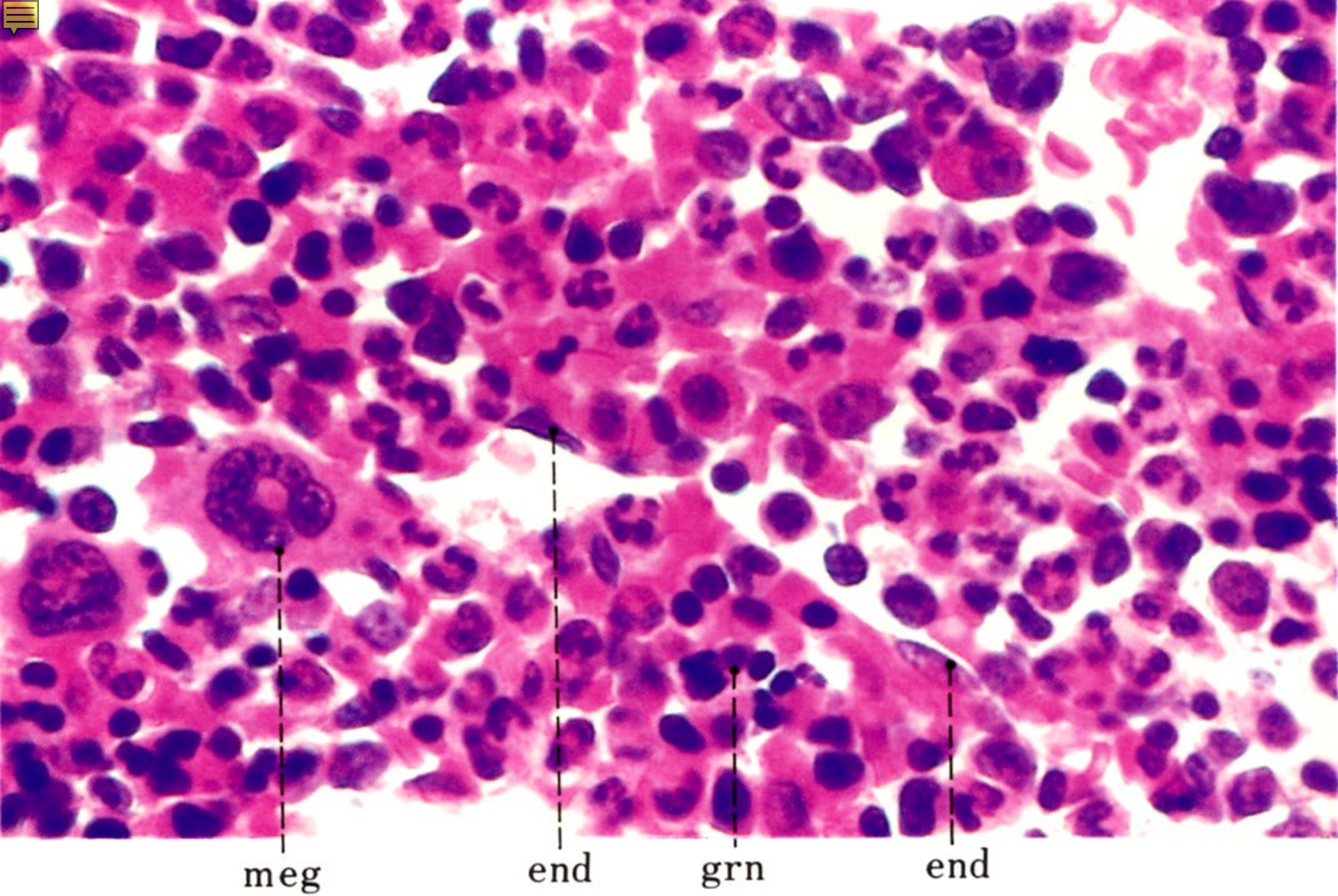
08-17. Osteoclast. Monkey, H-E stain, x 400.



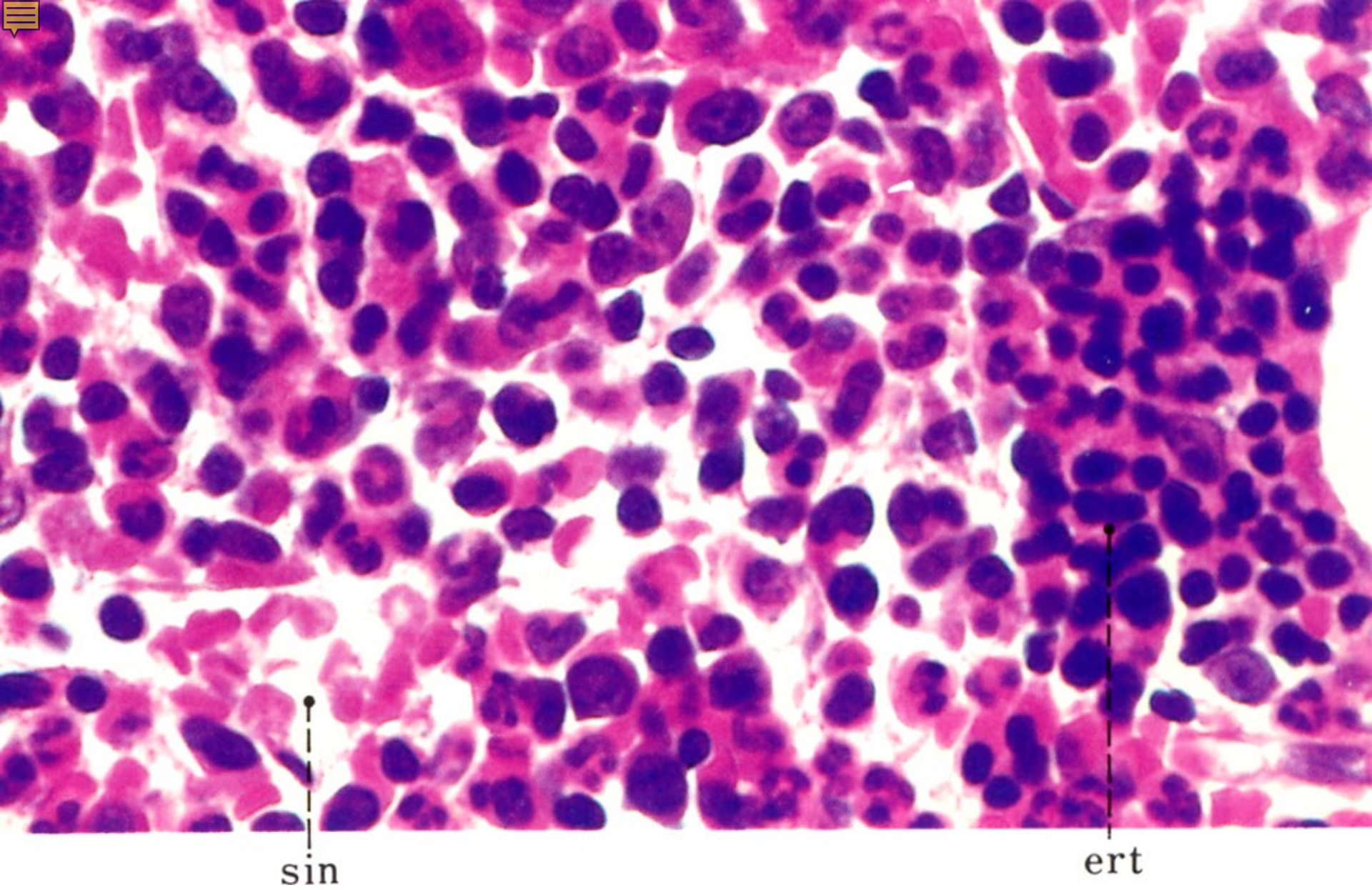
08-18. Bone marrow 1. Monkey, H-E stain, x 25.



08-19. Bone marrow 2. Monkey, H-E stain, x 64.



08-20. Bone marrow 3. Monkey, H-E stain, x 250.



08-21. Bone marrow 4. Monkey, H-E stain, x 250.