



Data base of Histology Color slides

Mizoguchi, Fumio

(Issue Date)

2015-05-04

(Resource Type)

learning object

(Version)

Version of Record

(Rights)

1. 利用者による利用の範囲は、著作権法に定める私的利用の範囲とする。2. 研究成果を利用者が利用した結果について、許諾者はその責任を負わない。
私的利用の範囲を超える二次利用（印刷物、ウェブサイト、発表資料等への転載など）については、利用希望者は附属図書館（<https://lib.kobe-u.ac.jp/da/secondaryuse/#secondaryuse-...>）

(URL)

<https://hdl.handle.net/20.500.14094/90009617>



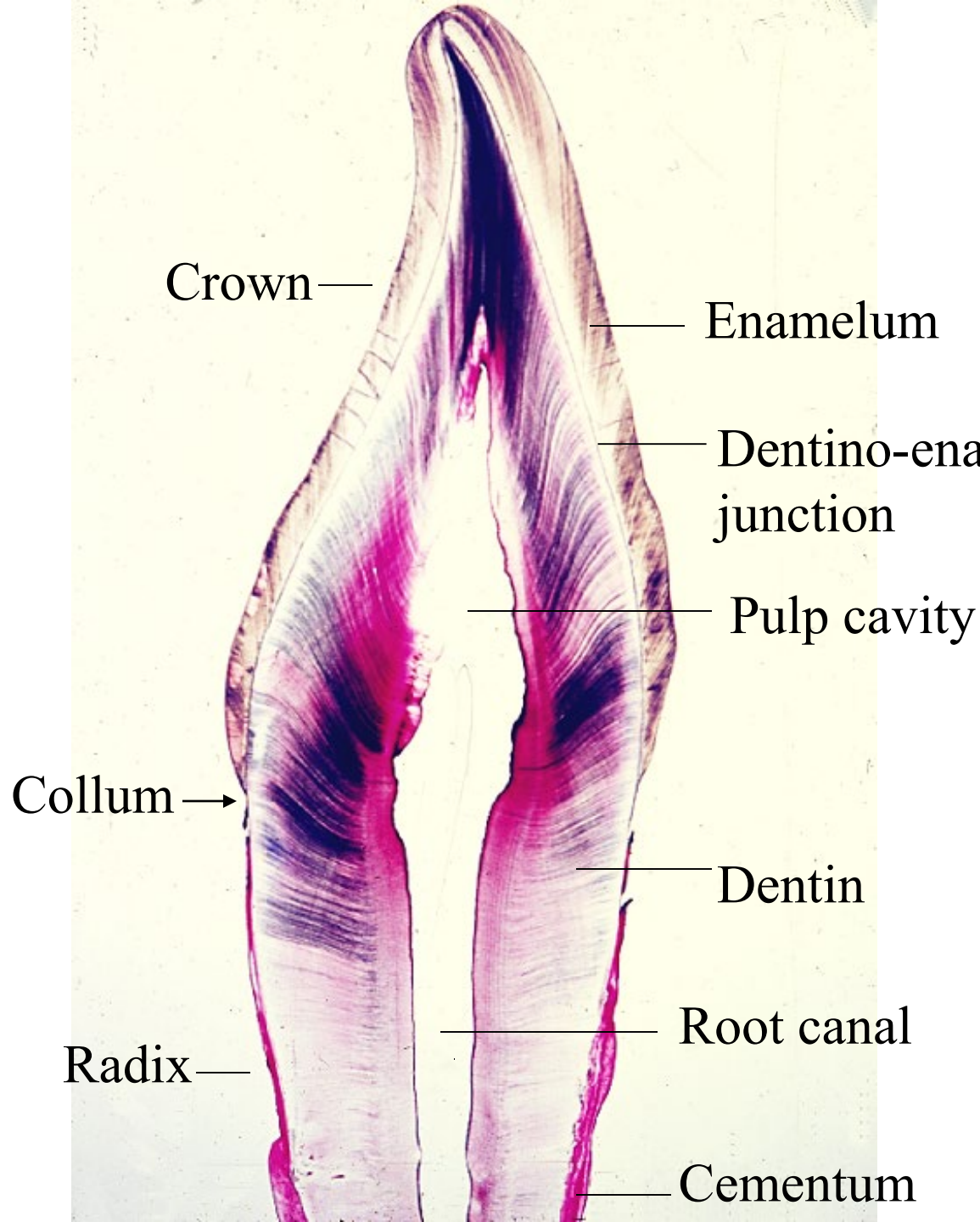


13

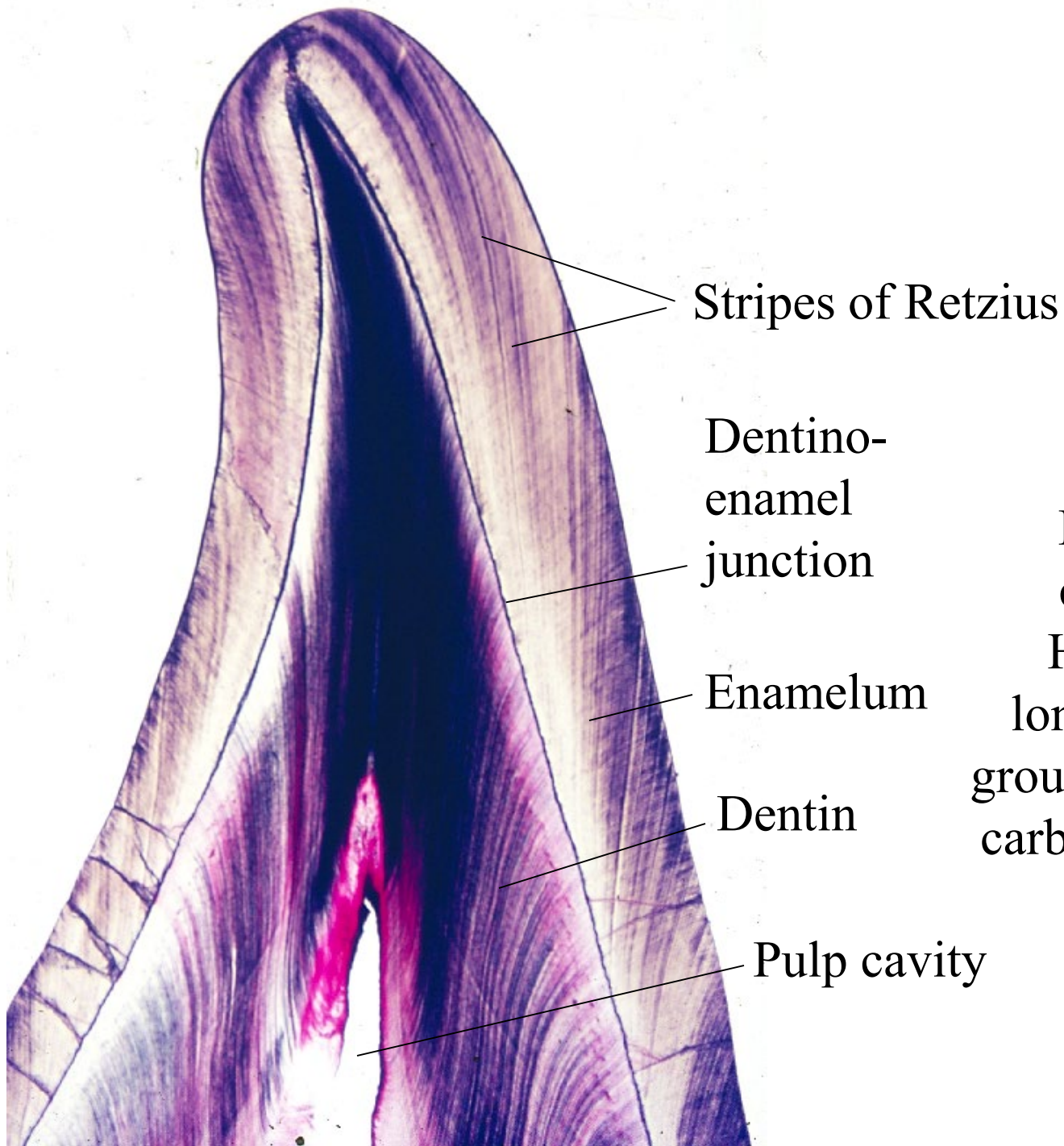
Digestive system

5

Teeth



13-01.
Incisor,
general view.
Human, longitudinal
ground section,
carbol-fuchsin stain,
x 1.3.



Stripes of Retzius

Dentino-
enamel
junction

Enamelum

Dentin

Pulp cavity

13-02.
Incisor,
crown.
Human,
longitudinal
ground section,
carbol-fuchsin
stain,
x 4.



Dentino-
enamel
junction

— Pulp cavity

Enamelum —

Collum →

Dentin —

— Root canal

Cementum —

13-03.
Incisure,
neck.
Human,
longitudinal
ground section,
carbol-fuchsin
stain,
x 4.

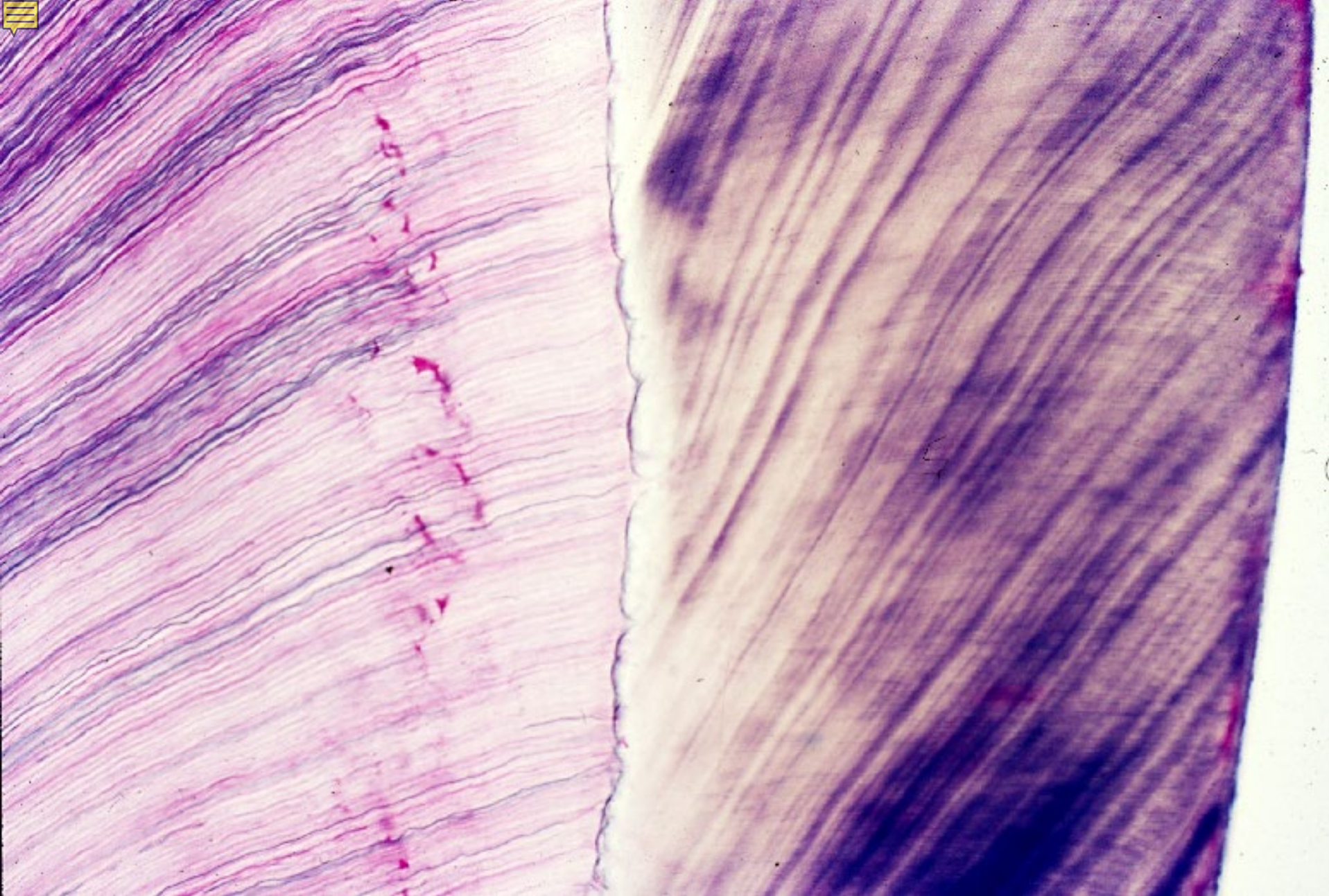


Root canal

Dentin

Cementum

13-04.
Incisure,
root.
Human,
longitudinal
ground section,
carbol-fuchsin
stain,
x 4.



13-05. Incisure, enamelum and dentin. Human, longitudinal ground section, carbol-fuchsin stain, x 25.



Dentin

Cementum

13-06. Incisure, dentin and cementum. Human, longitudinal ground section, carbol-fuchsin stain, x 25.



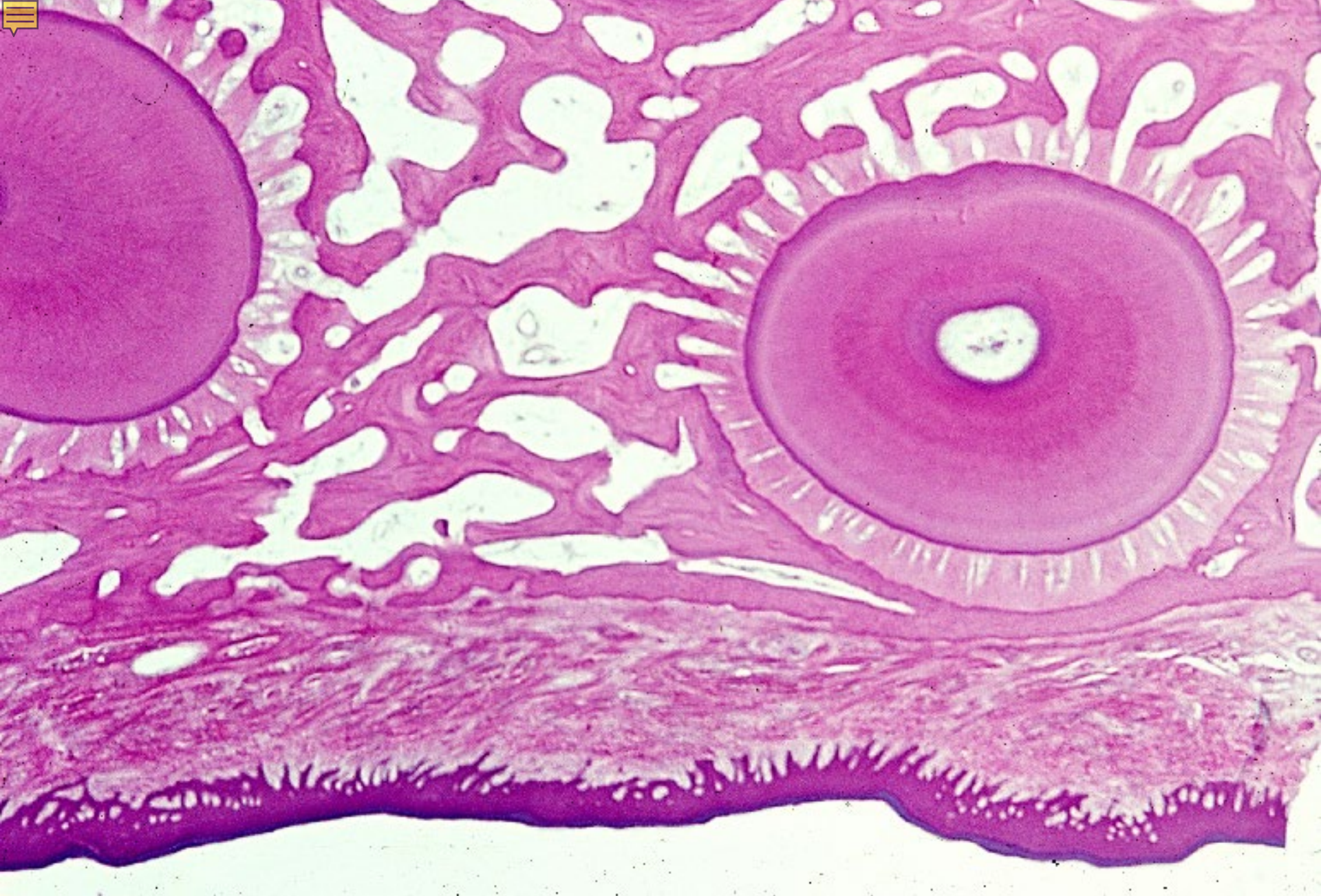
Periodontal
membrane

Alveolus

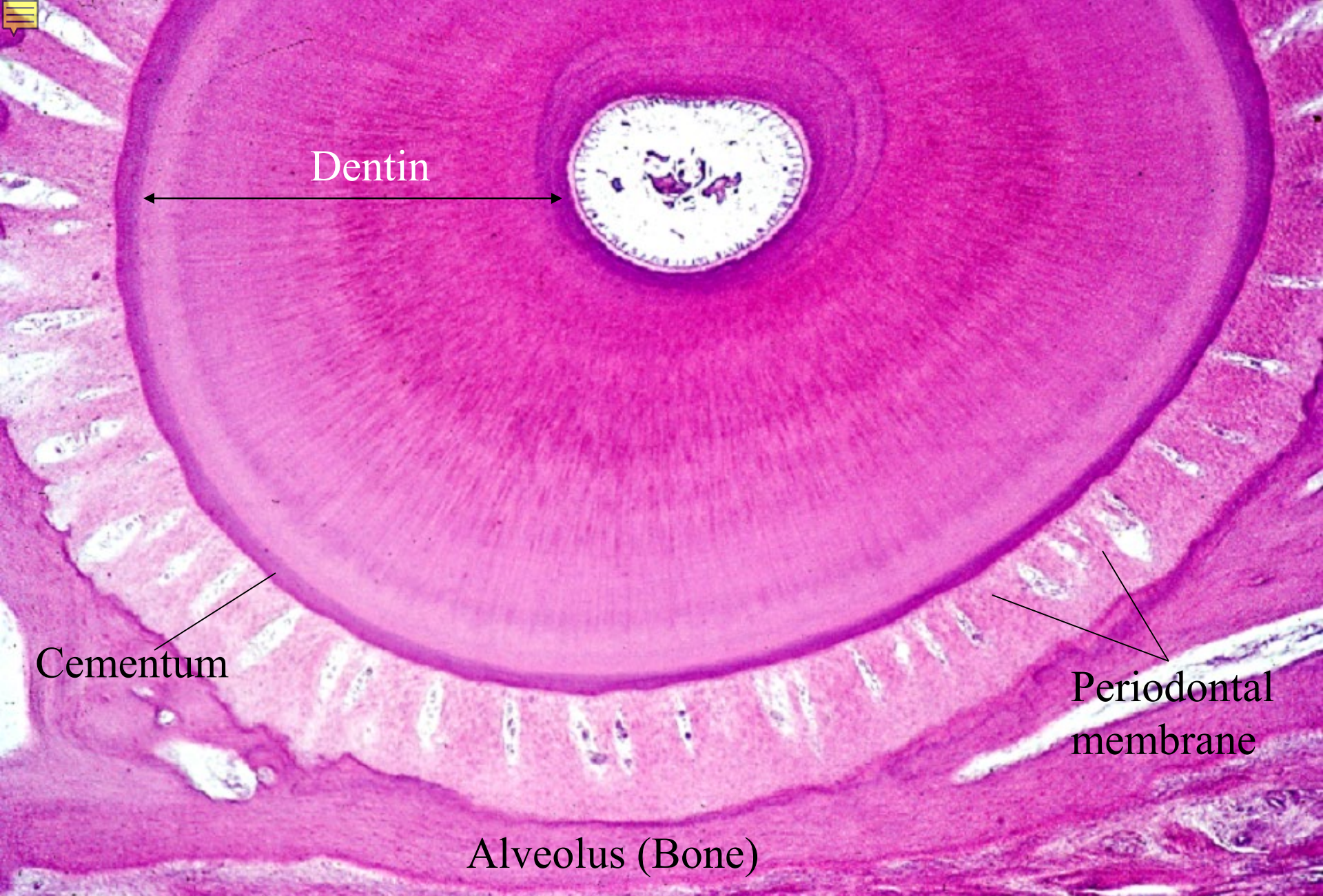
Periodontal
membrane



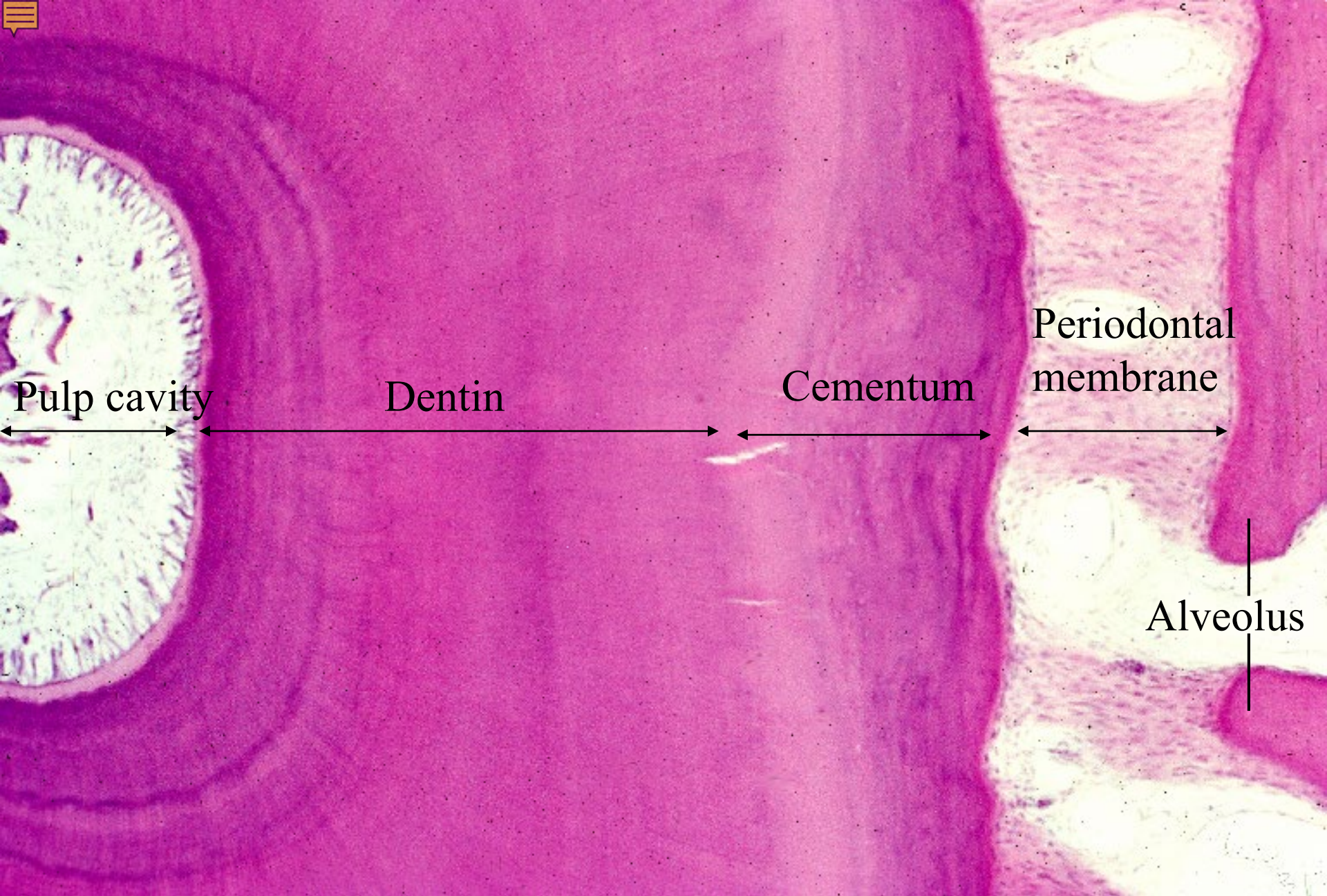
13-07.
Maleus major
in alveolus.
Monkey,
decalcified,
longinal section,
x 1.5.



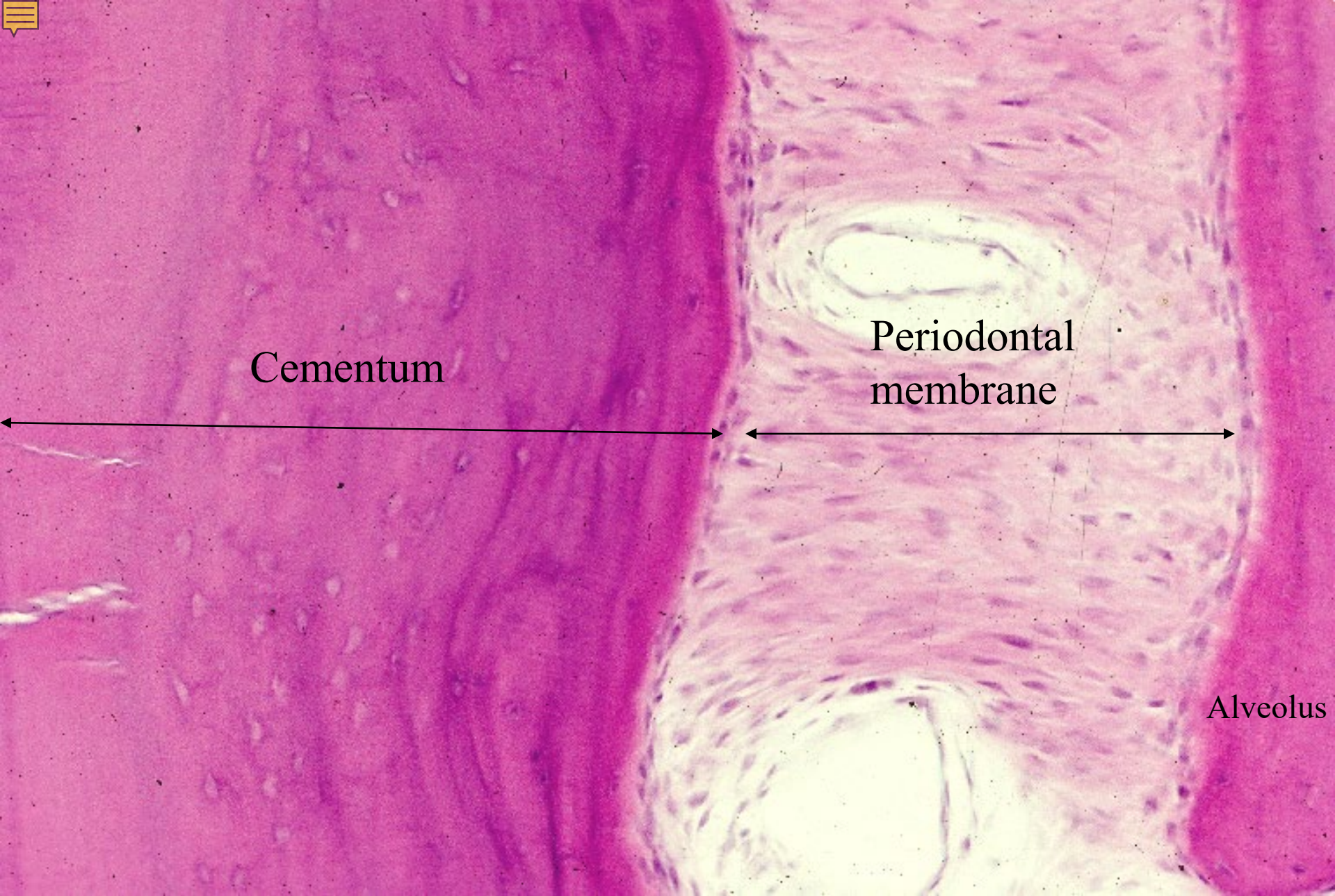
13-08. Root of teeth in alveoli, transverse section. Monkey, decalcified section, H-E stain, x 40.



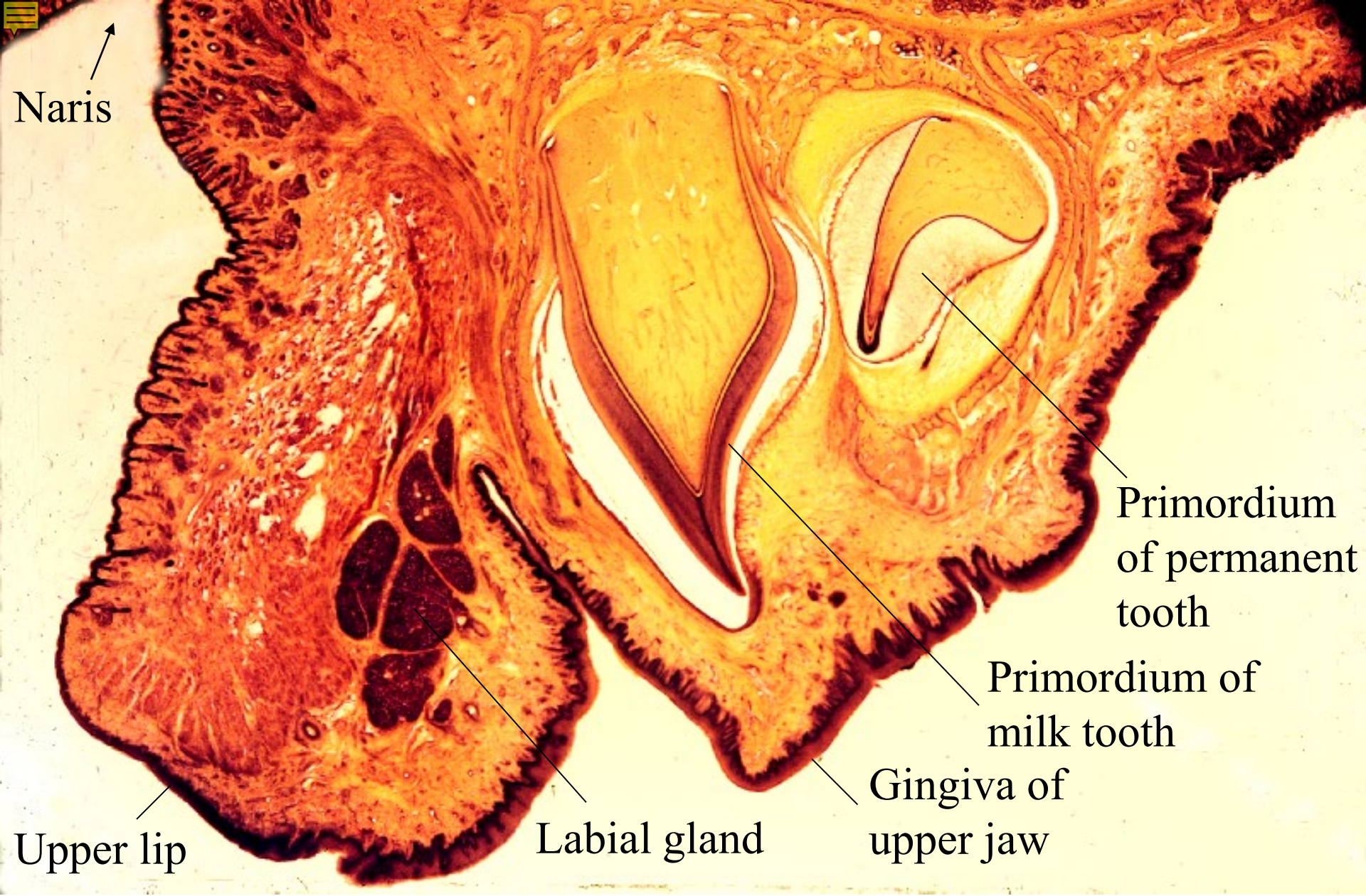
13-09. Root of tooth in alveolus, transverse section 1.
Monkey, decalcified section, H-E stain, x 10.



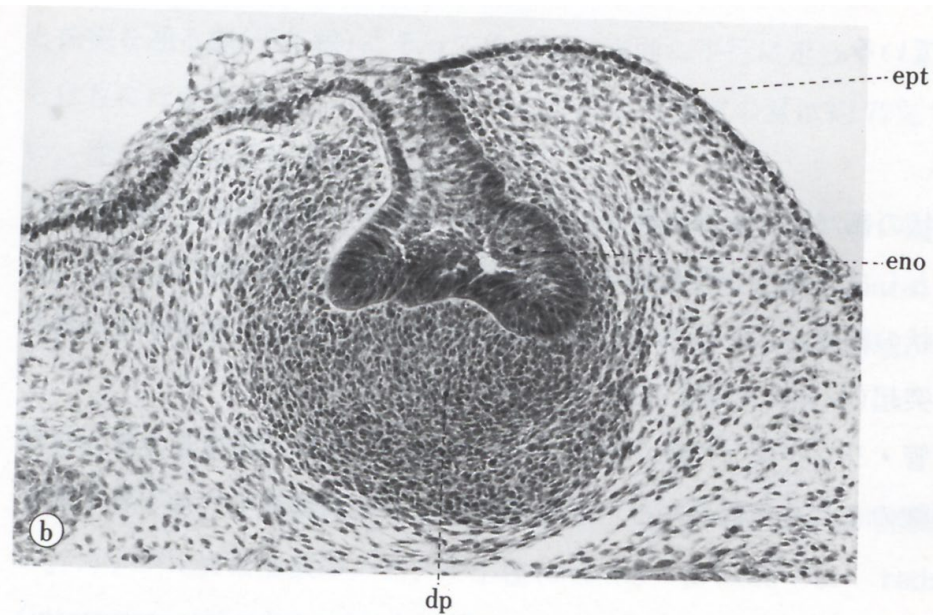
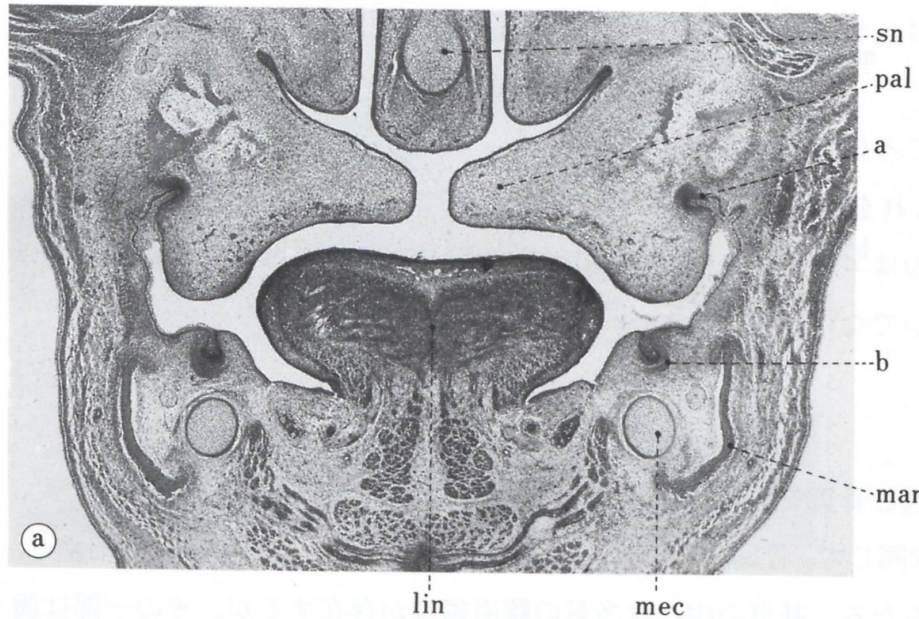
13-10. Root of tooth in alveolus, transverse section 2. Monkey, decalcified section, H-E stain, x 25.



13-11. Root of tooth in alveolus, transverse section 3. Cementum, periodontium and alveolus. Monkey, decalcified section, H-E stain, x 64.



13-12. Sagittal section of upper jaw through the naris.
Human newborn, H-E stain, x 1.2.

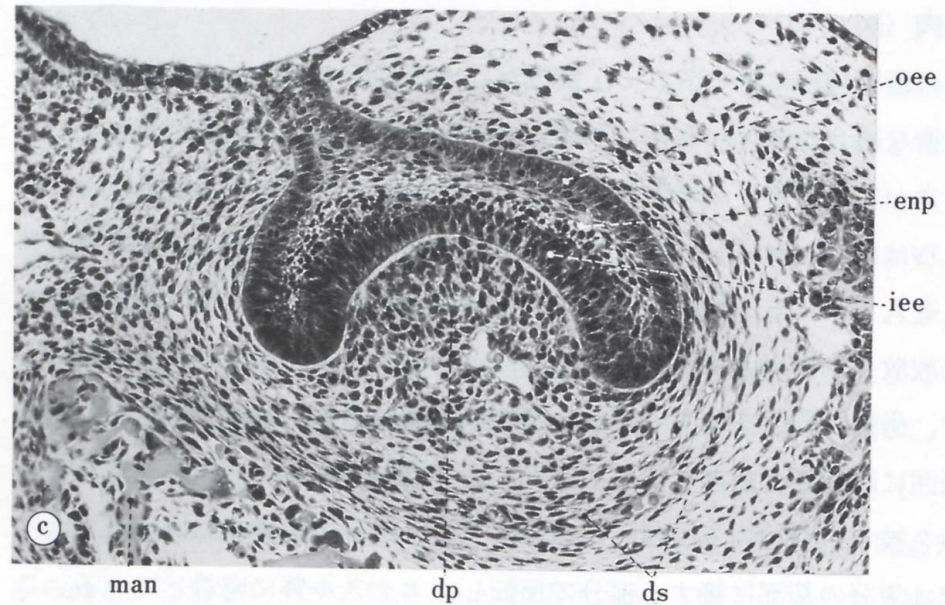


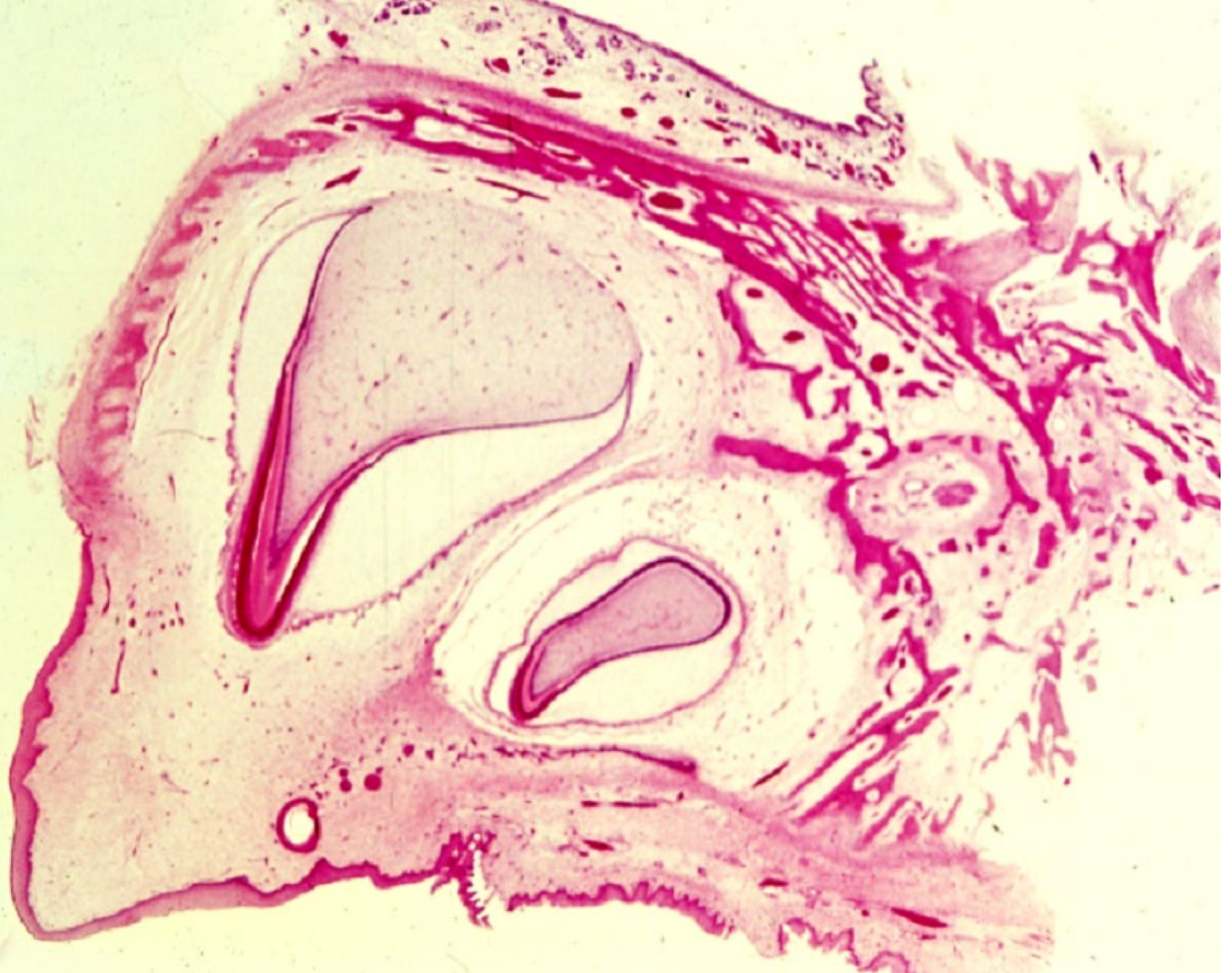
13-13. Development of tooth.

a: Frontal section of a 4-month-old human embryo.

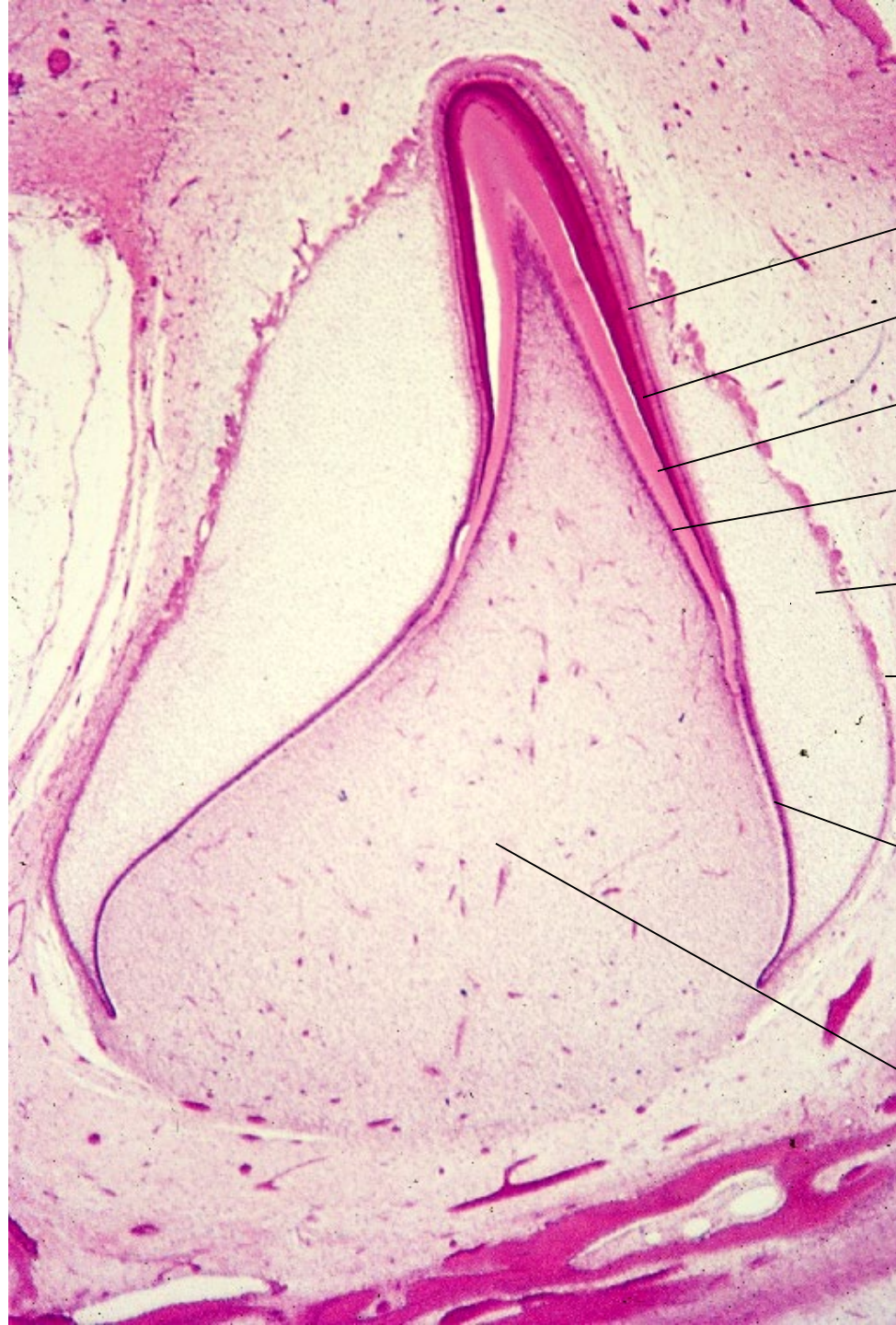
b: Primordium of tooth of 4-month-old human embryo.

c: Primordium of tooth of 18-day-old rat embryo.





13-14. Development of tooth 1. Human embryo, decalcified section,



Ameloblasts

Enamelum

Dentin

Odontoblasts

Enamel pulp

External enamel
epithelium

Internal
enamel
epithelium

Dental papilla

13-15.

Development
of tooth 2.

Human embryo,
decalcified

section,
H-E stain,
x 6.



13-16.

Development
of tooth 3.

Human embryo,
decalcified
section,
H-E stain,
x 25.

Enamel pulp

Ameloblasts

Enamelum

Dentin

Odontoblasts

Dental
papilla



Enamel pulp

Ameloblasts

Tome's process

Enamelum

Dentin

Odontoblasts

Dental papilla
(Dental pulp)

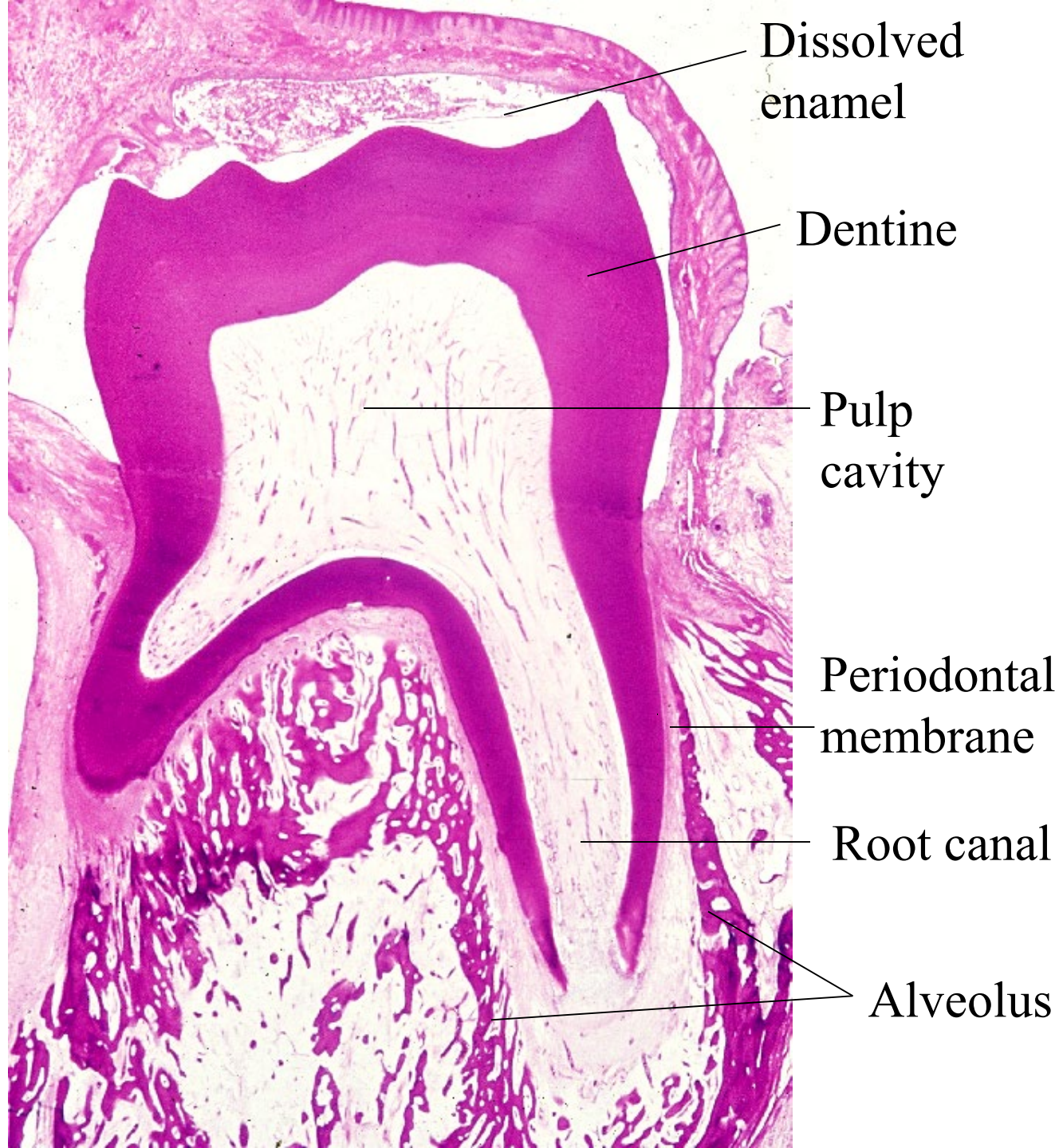
13-17.

Development
of tooth 4.

Human embryo,
decalcified
section,
H-E stain,
x 64.



13-18. Development of tooth 5. Human embryo, decalcified section. H-E stain. x 160.



Dissolved
enamel

Dentine

Pulp
cavity

Periodontal
membrane

Root canal

Alveolus

13-19.
Major molar
just before
eruption,
longitudinal
section.
Monkey,
decalcified
section,
H-E stain,
x 1.6.