



Data base of Histology Color slides

Mizoguchi, Fumio

(Issue Date)

2015-05-04

(Resource Type)

learning object

(Version)

Version of Record

(Rights)

1. 利用者による利用の範囲は、著作権法に定める私的利用の範囲とする。2. 研究成果を利用者が利用した結果について、許諾者はその責任を負わない。
私的利用の範囲を超える二次利用（印刷物、ウェブサイト、発表資料等への転載など）については、利用希望者は附属図書館（<https://lib.kobe-u.ac.jp/da/secondaryuse/#secondaryuse-...>）

(URL)

<https://hdl.handle.net/20.500.14094/90009617>





19

Visual Organs



19-001

Eyeballs

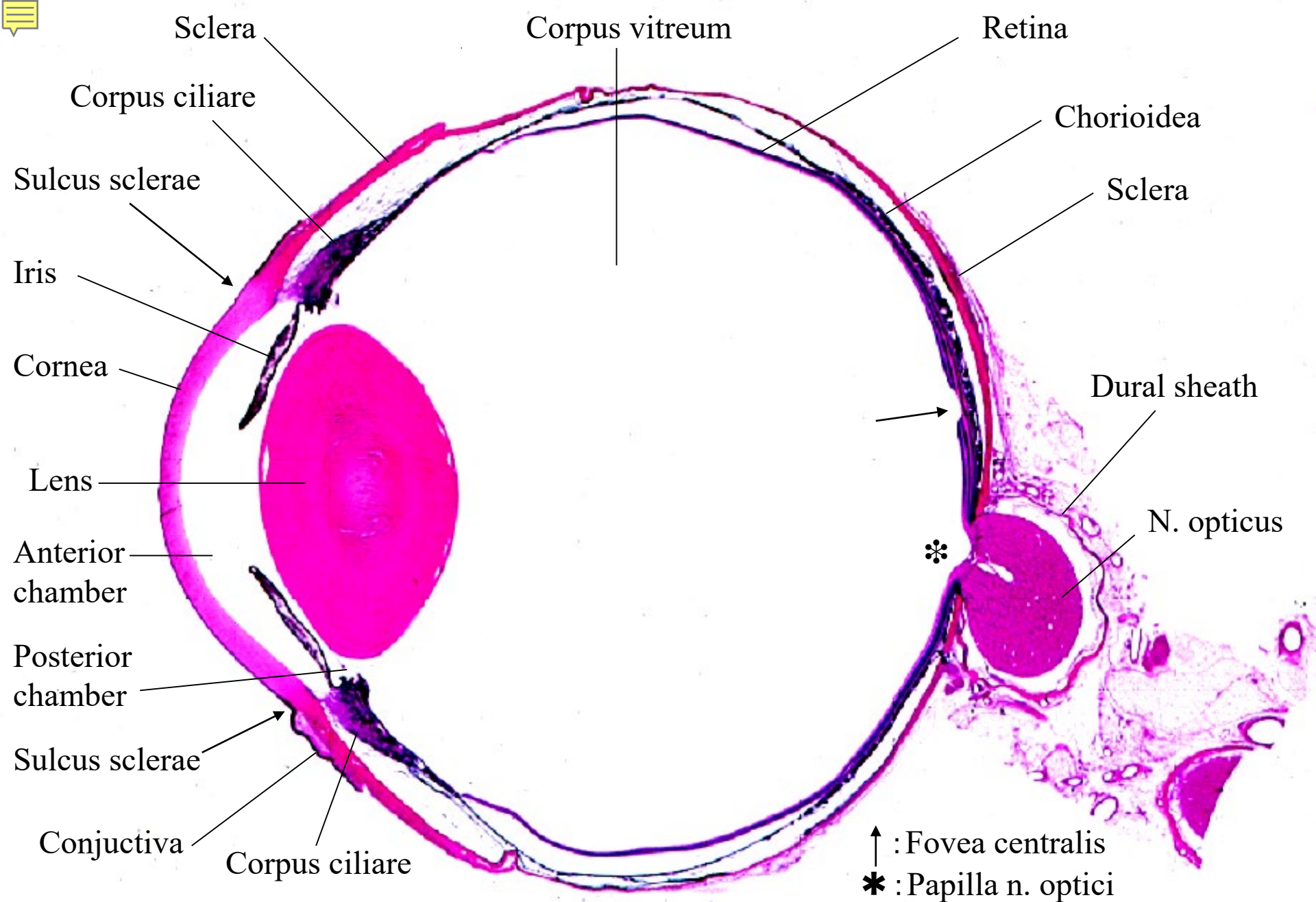




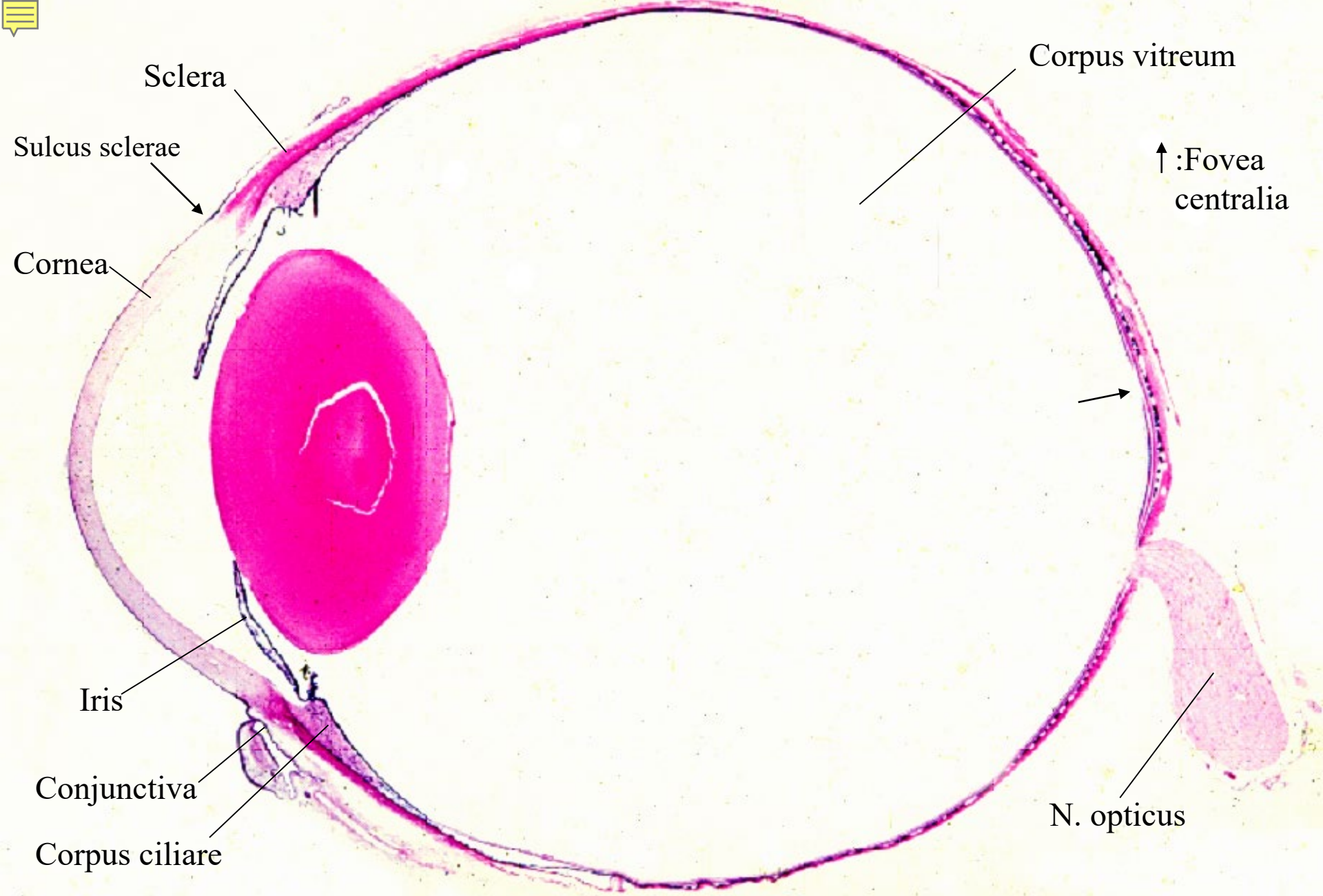
		Anterior portion	Posterior portion
Wall of eye-ball	Tunica fibrosa	Cornea	Sclera
	Tunica vasculosa	Iris & Corpus ciliare	Chorioidea
	Tunica interna	Pars caeca retinae ①Pars iridica retinae ②Pars ciliaris retinae	Retina
Contents		Lens & Humor aquaeus	Corpus vitreum

① and ② are both the component of Iris and Corpus ciriale, respectively.

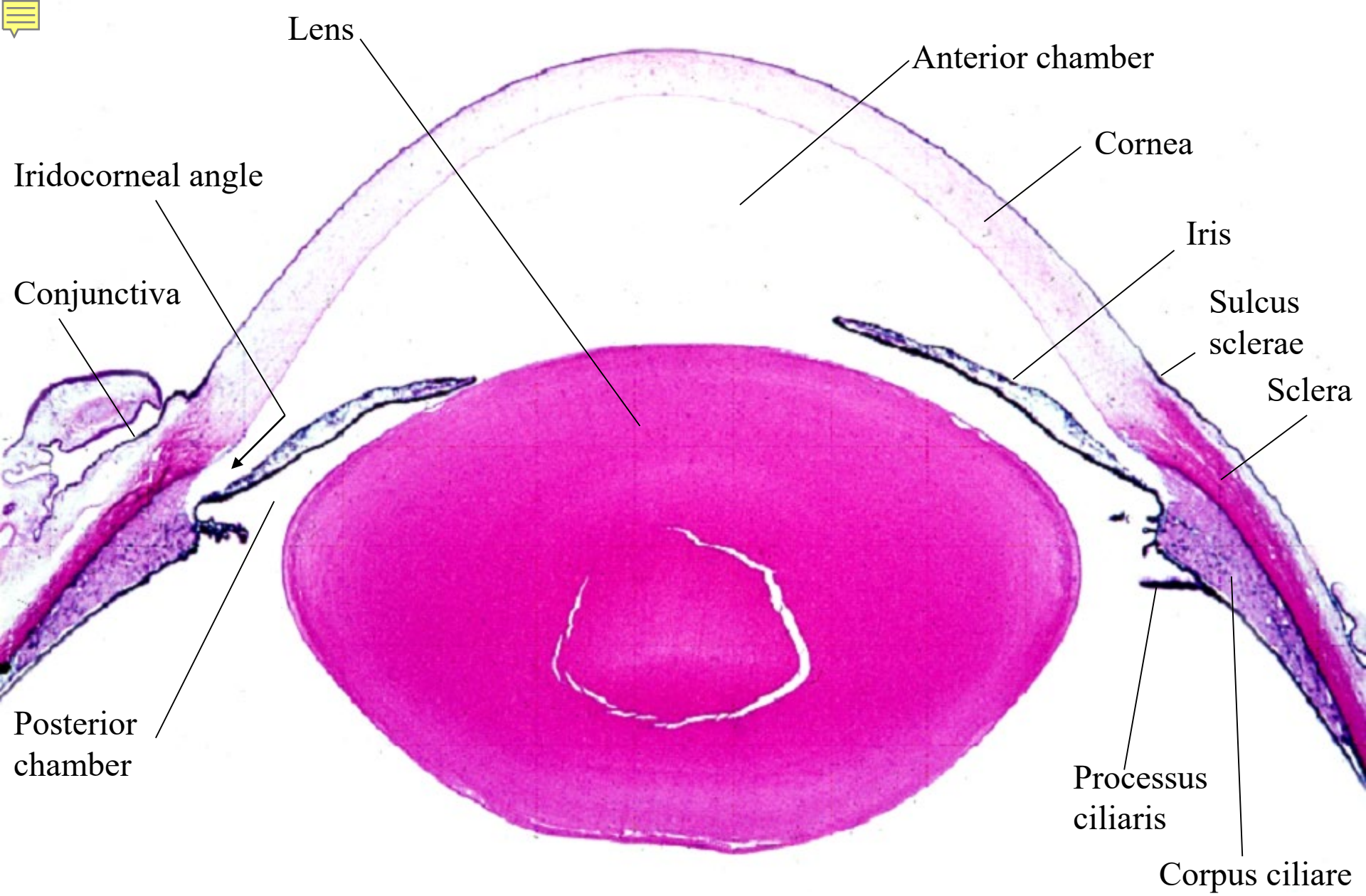
19-02. Table showing the structure of eyeball.



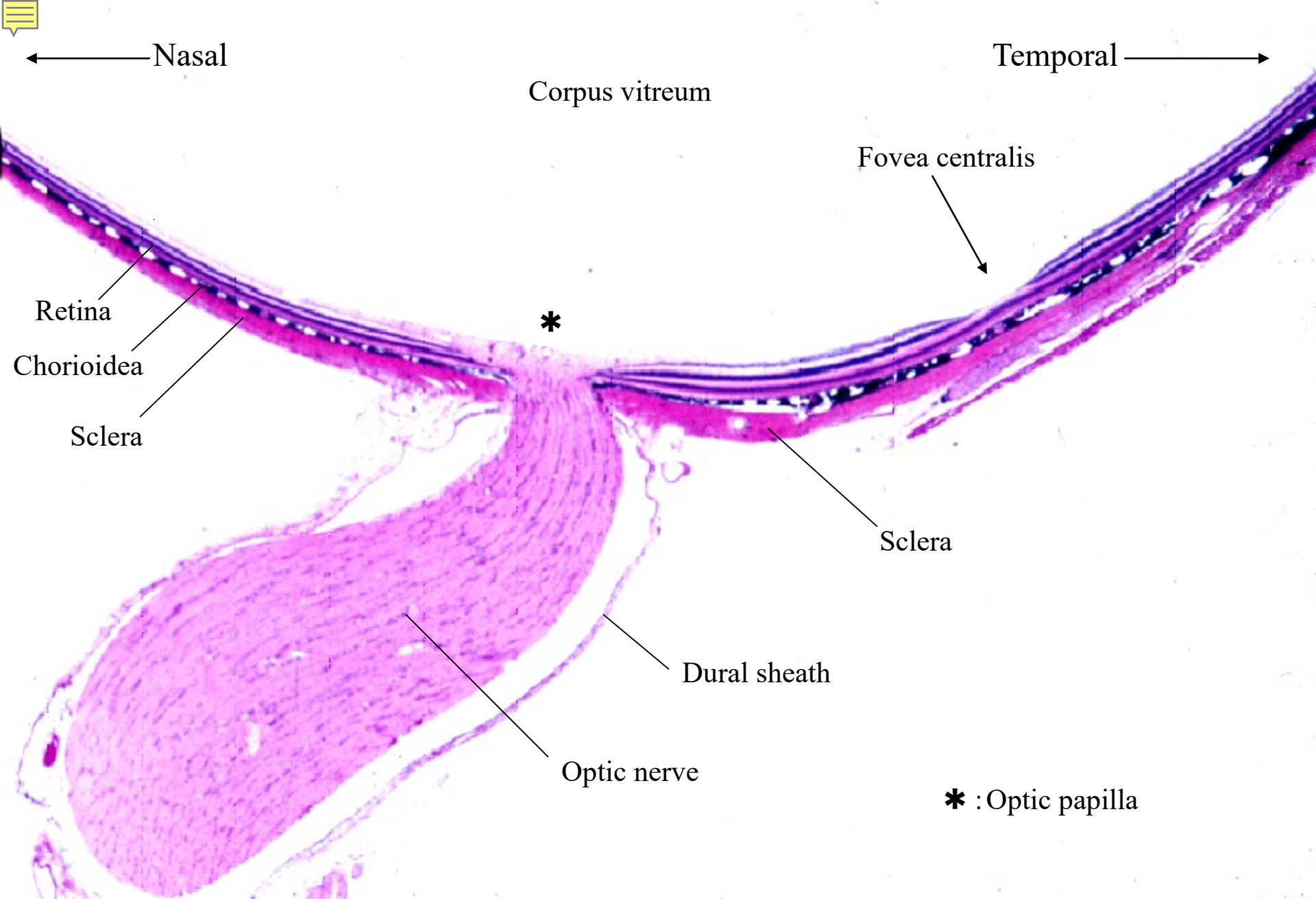
19-03. Eyeball, horizontal section, 1. Monkey, H-E stain, x 1.2.



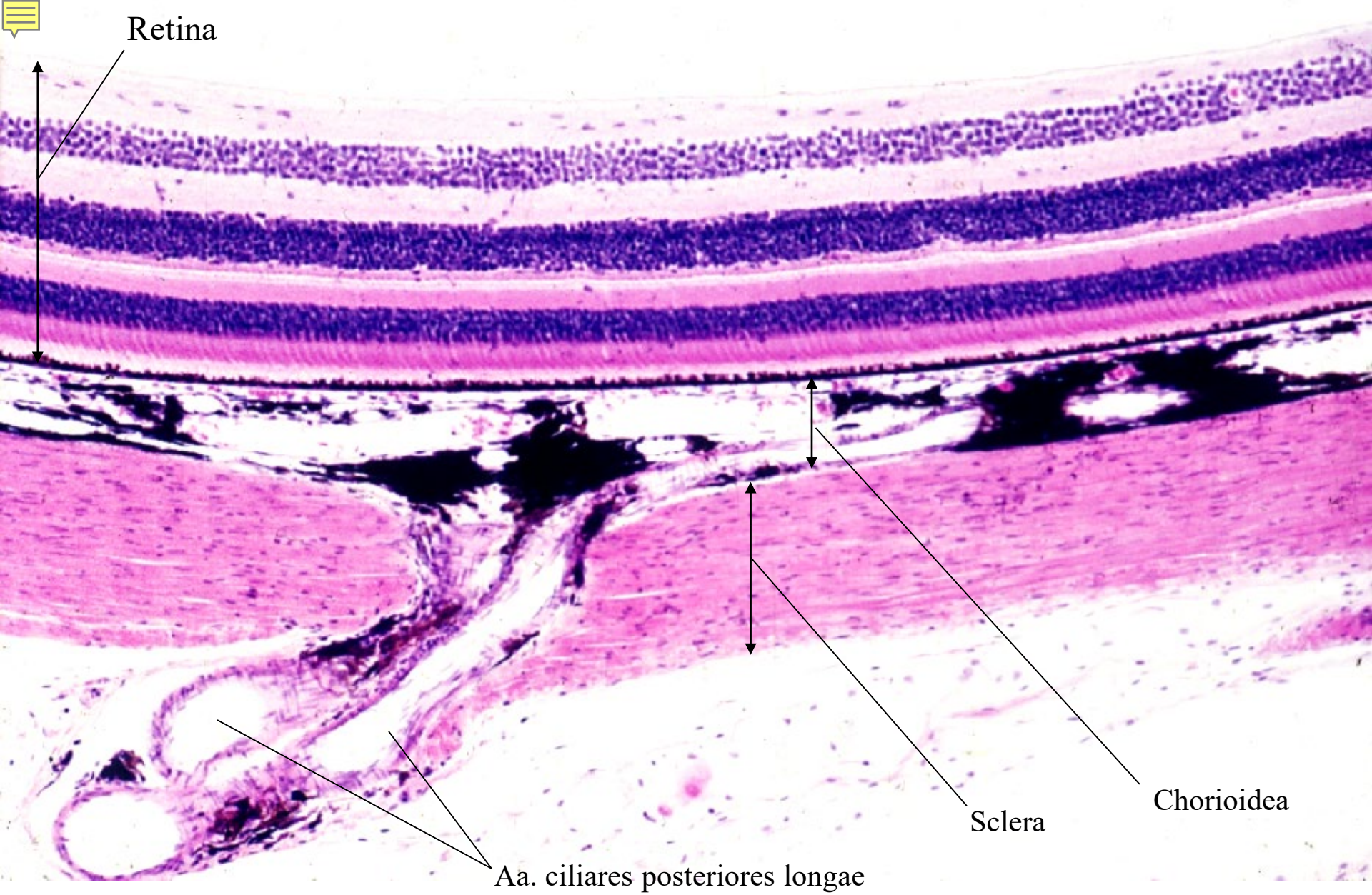
19-04. Eyeball, horizontal section, 2. Monkey, H-E stain, x 1.6.



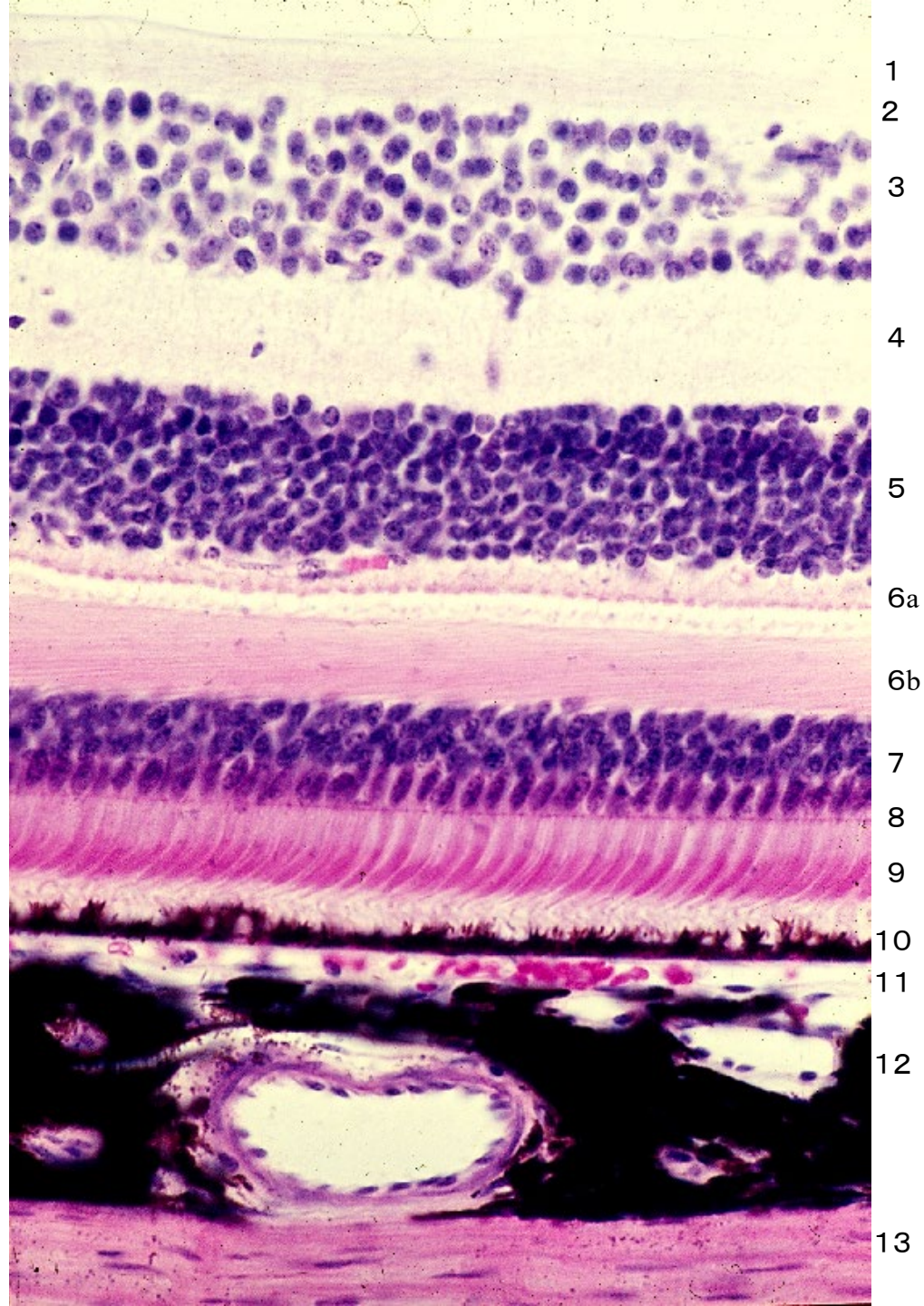
19-05. Anterior portion of eyeball. Monkey, H-E stain, x 2.0.



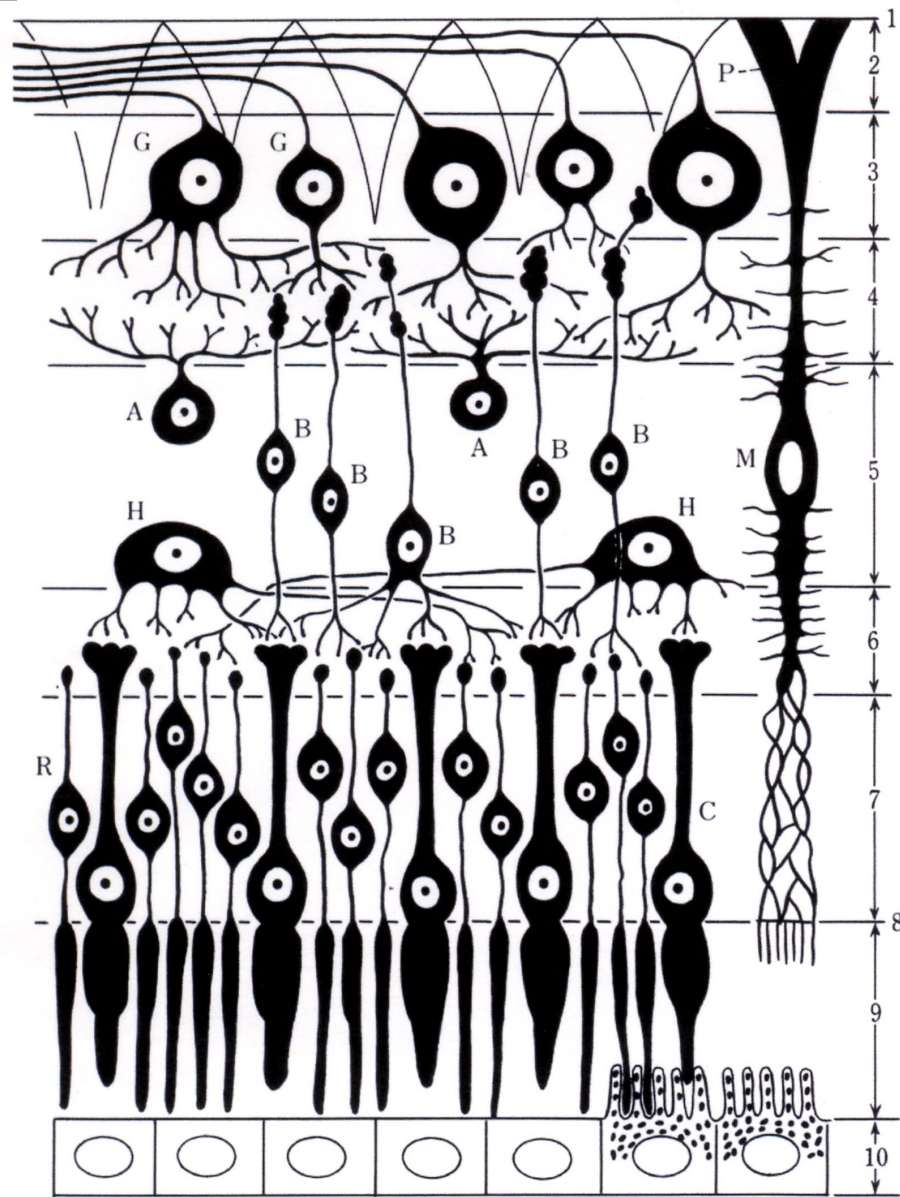
19-06. Posterior portion of eyeball, Monkey. H-E stain, x 4.



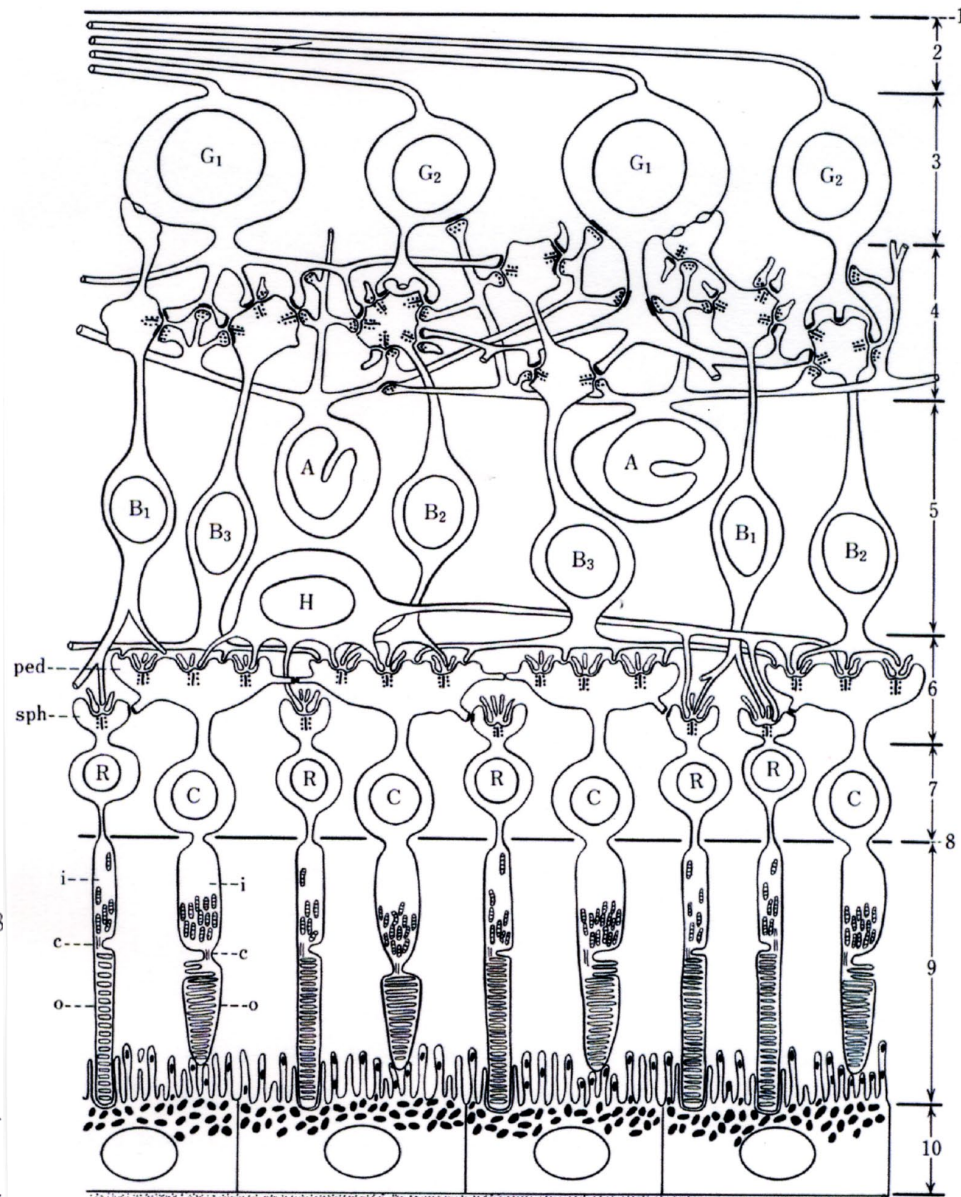
10-07. Posterior wall of eyeball. Monkey, H-E stain, x 30.





19-08..
Retina 1.
Monkey,
H-E stain,
x 100.



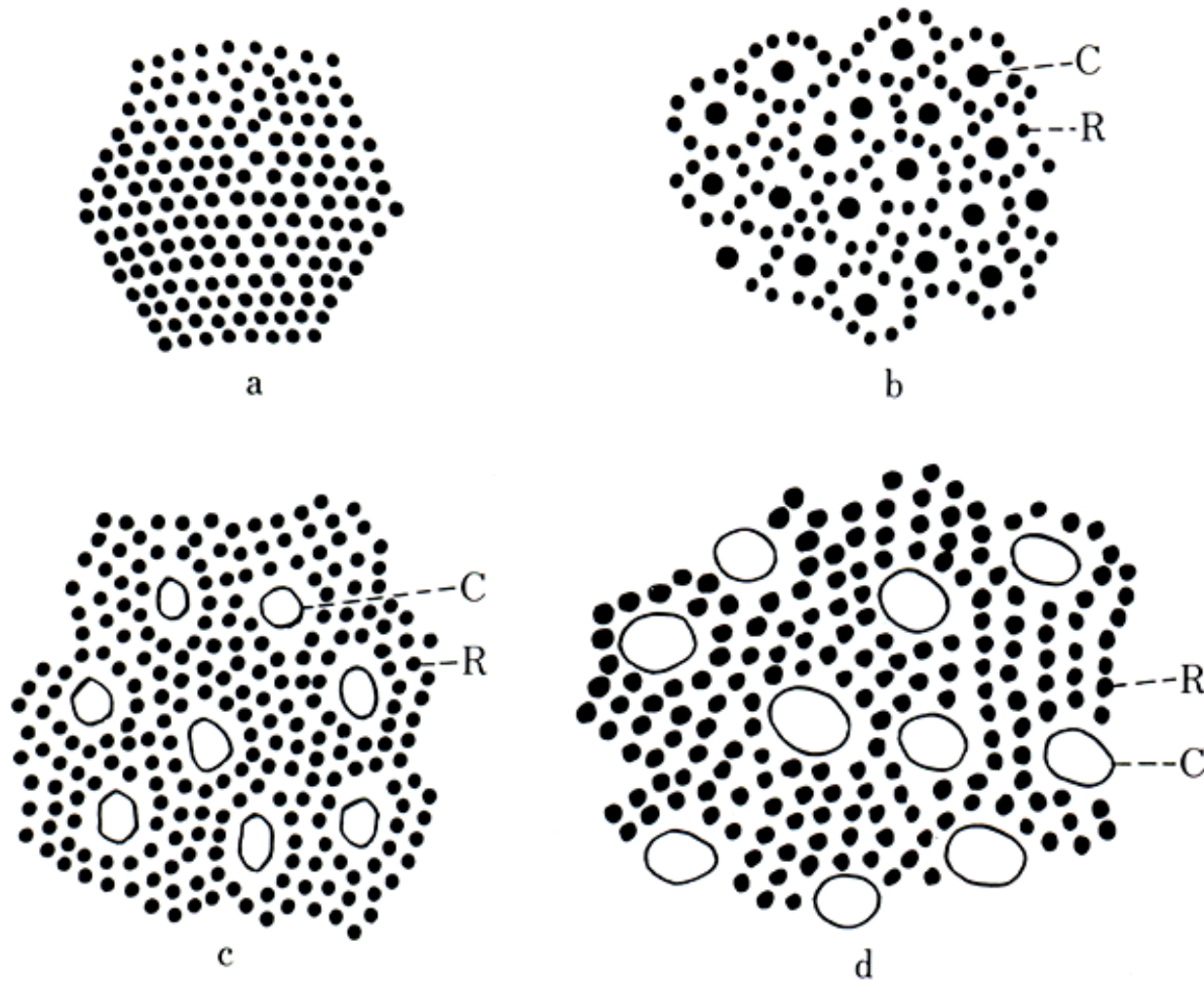
Golgi method



Electron microscopy

Path-way of light	Layers of retina	Cells constituting retina	Neuronal conduction
	<div><div><div>1 . Int. limiting membrane</div><div>2 . Layer of optic nerve</div><div>3 . Layer of ganglion cells</div><div>4 . Inner plexiform layer</div><div>5 . Inner granular layer</div><div>6 . Outer plexiform layer</div><div>7 . Outer granular layer</div><div>8 . Ext. limiting membrane</div><div>9 . Layer of cones & rods</div></div><div><div>-----d.</div><div>-----c.</div><div>-----b.</div></div></div>	<div><div>Optic nerve cells</div><div>Bipolar cells</div><div>Cone cells & Rod cells</div></div>	
	<div><div>10. Layer of pigment epithelium</div><div>-----a.</div></div>	<div><div>Cells of pigment epithelium</div></div>	

19-10. Table showing the path way of light and neuronal conduction.



a: Central portion of the fovea centralis.

b: Peripheral portion of the fovea centralis.

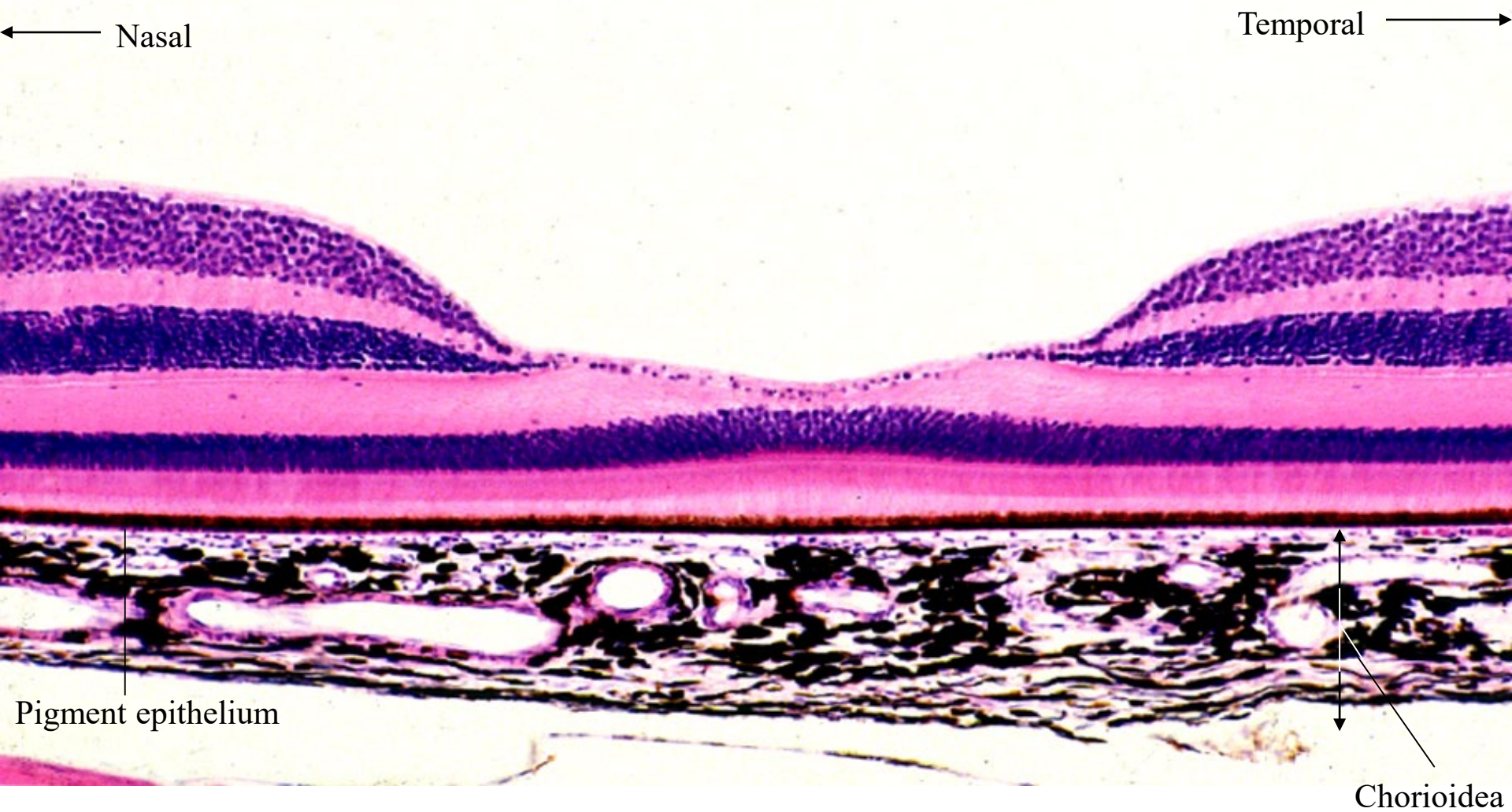
c: Ring area surrounding the fovea centralis.

d: The most peripheral area near the ora serrata.

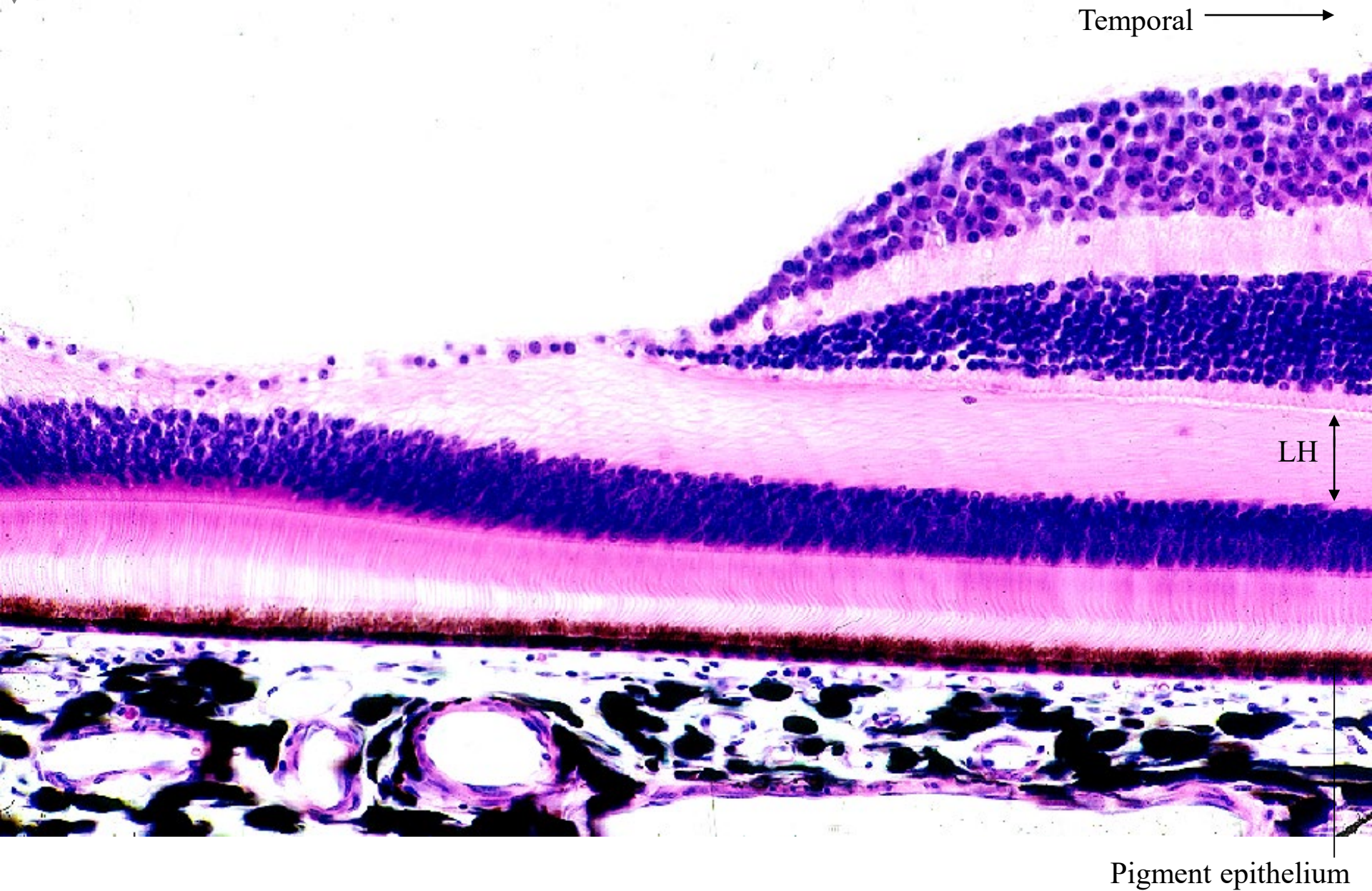
C: Cone.

R: Rod.

19-11. Scheme showing the distribution of cones and rods.



19-12. Fovea centralis 1. Monkey, H-E stain, x 25.

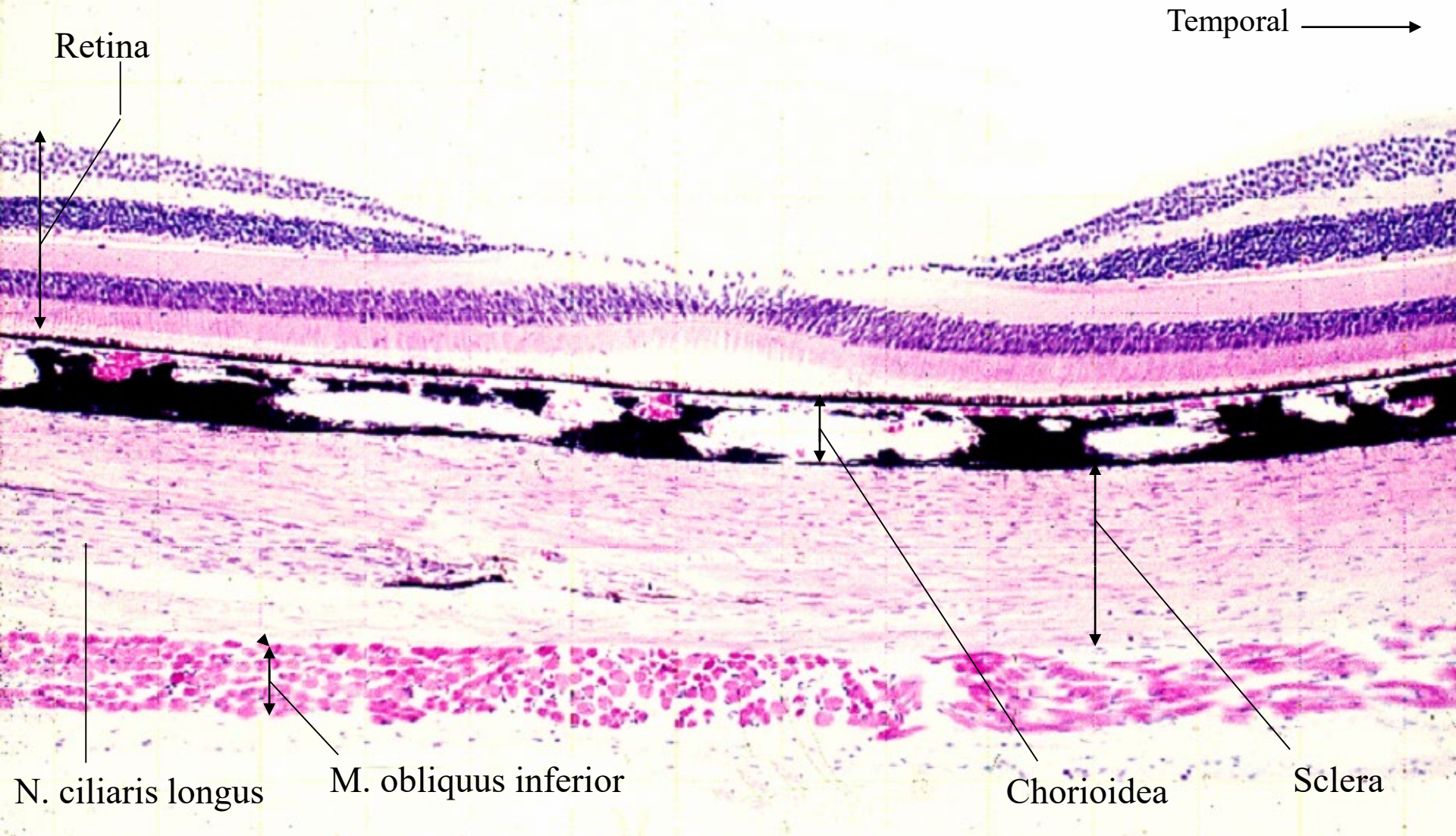


Temporal →

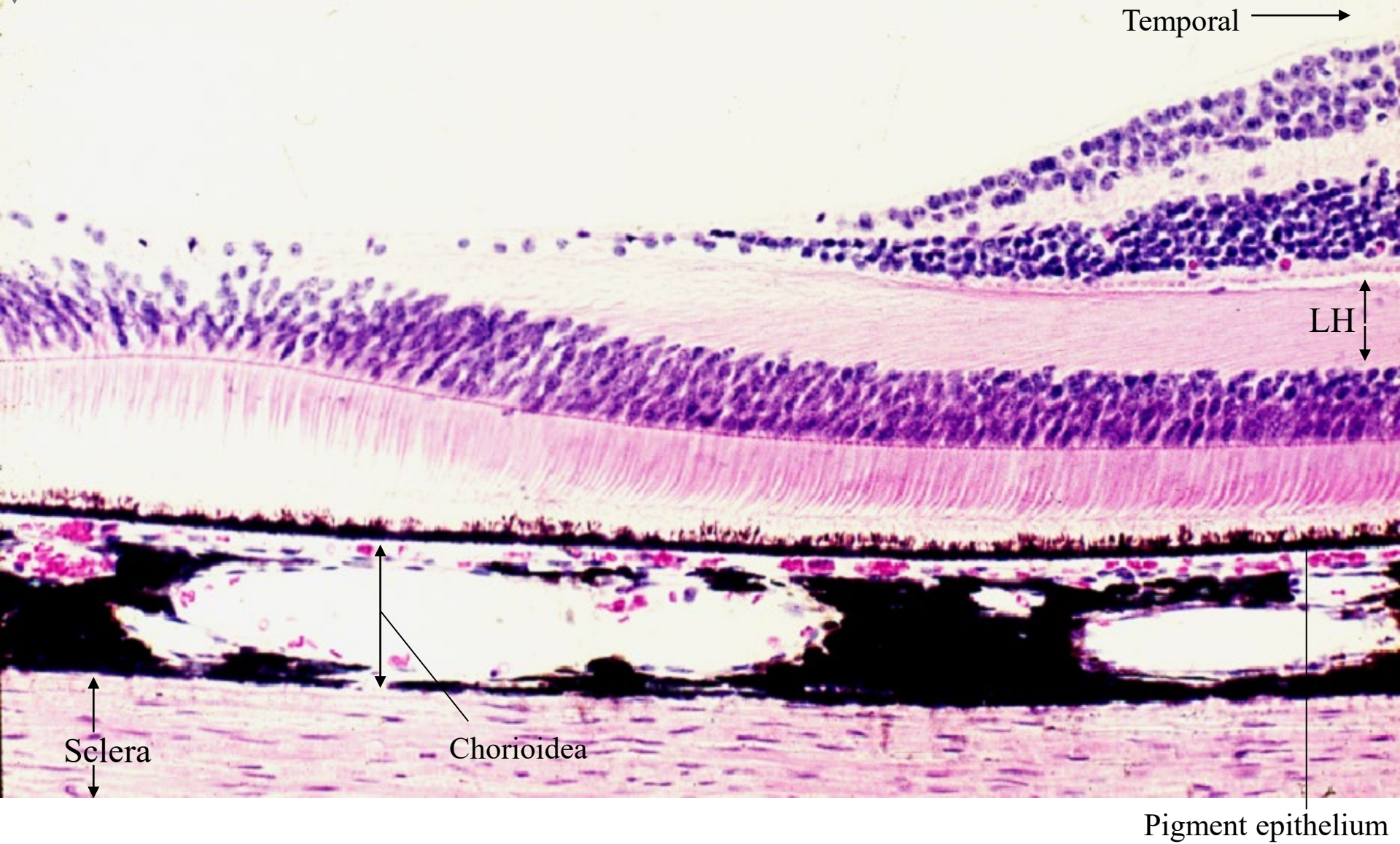
LH

Pigment epithelium

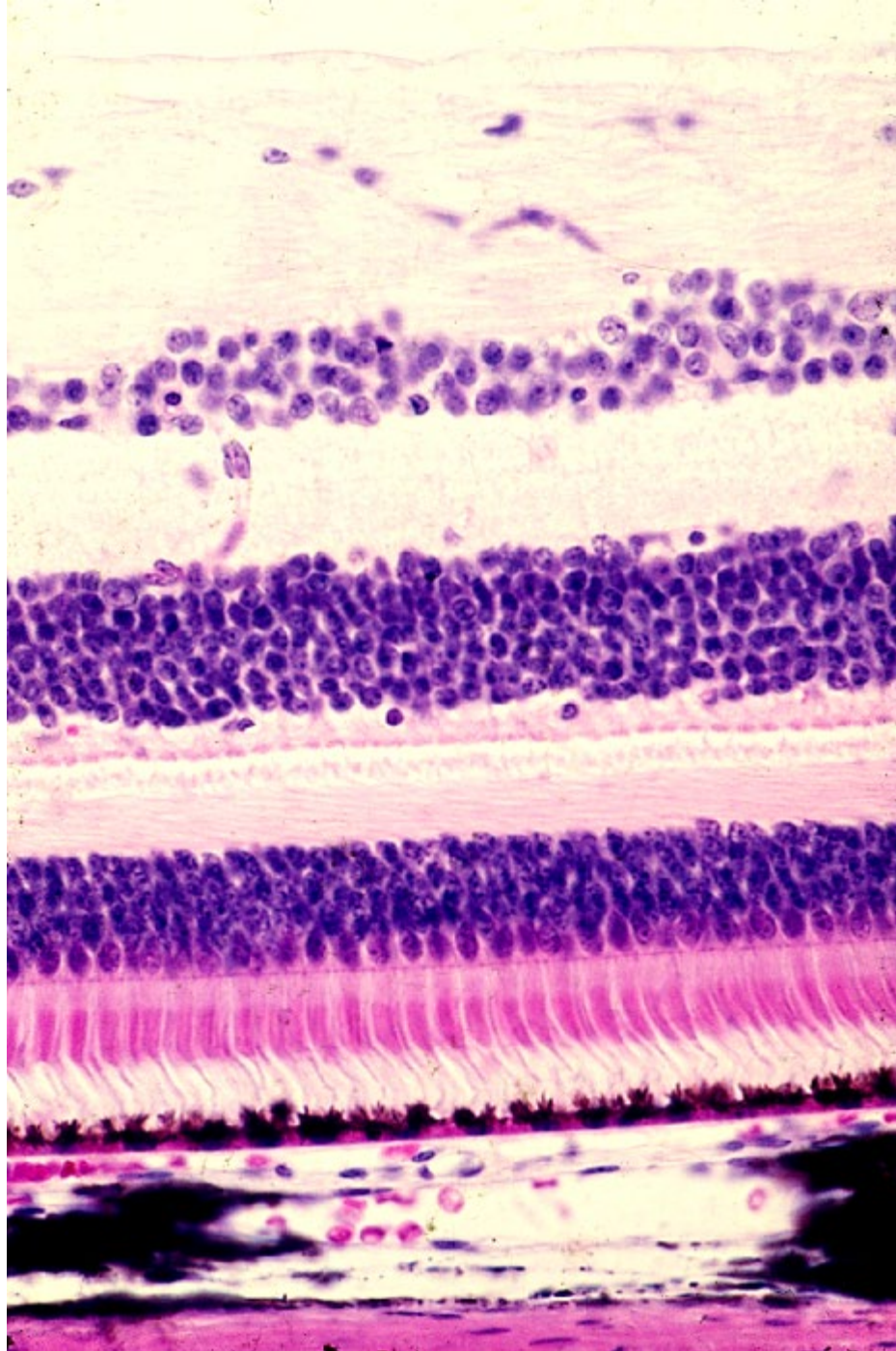
19-13. Fovea centralis 2. Monkey, H-E stain, x 50.



19-14. Fovea centralis 3. Monkey, H-E stain, x 25.



19-15. Fovea centralis 4. Monkey, H-E stain, x 64.



1

2

3

4

5

6a

6b

7

8

9

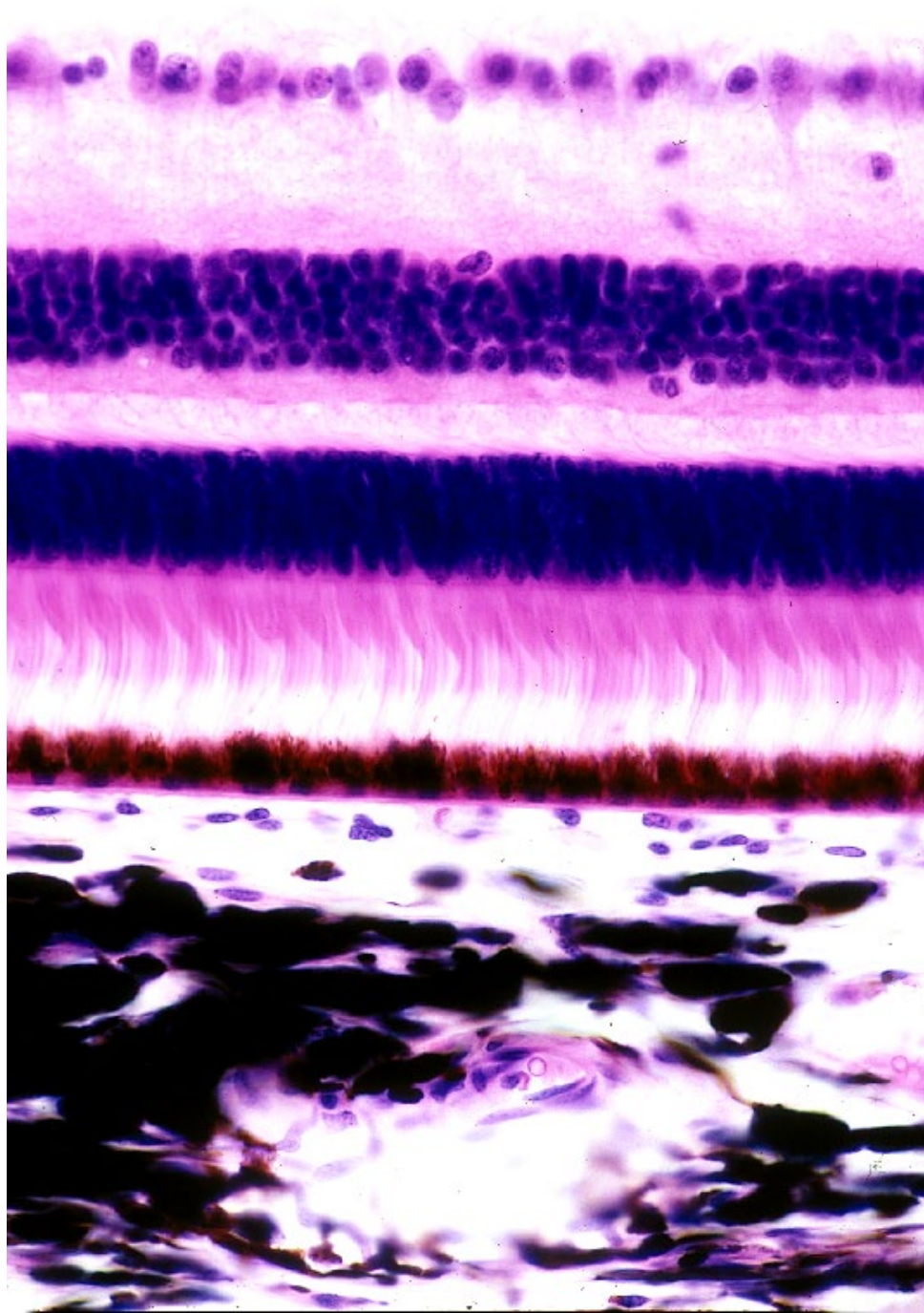
10

11

12

13

19-16.
Retina 2.
Monkey,
H-E stain,
x 100.



1
2
3

4

5

6

7

8

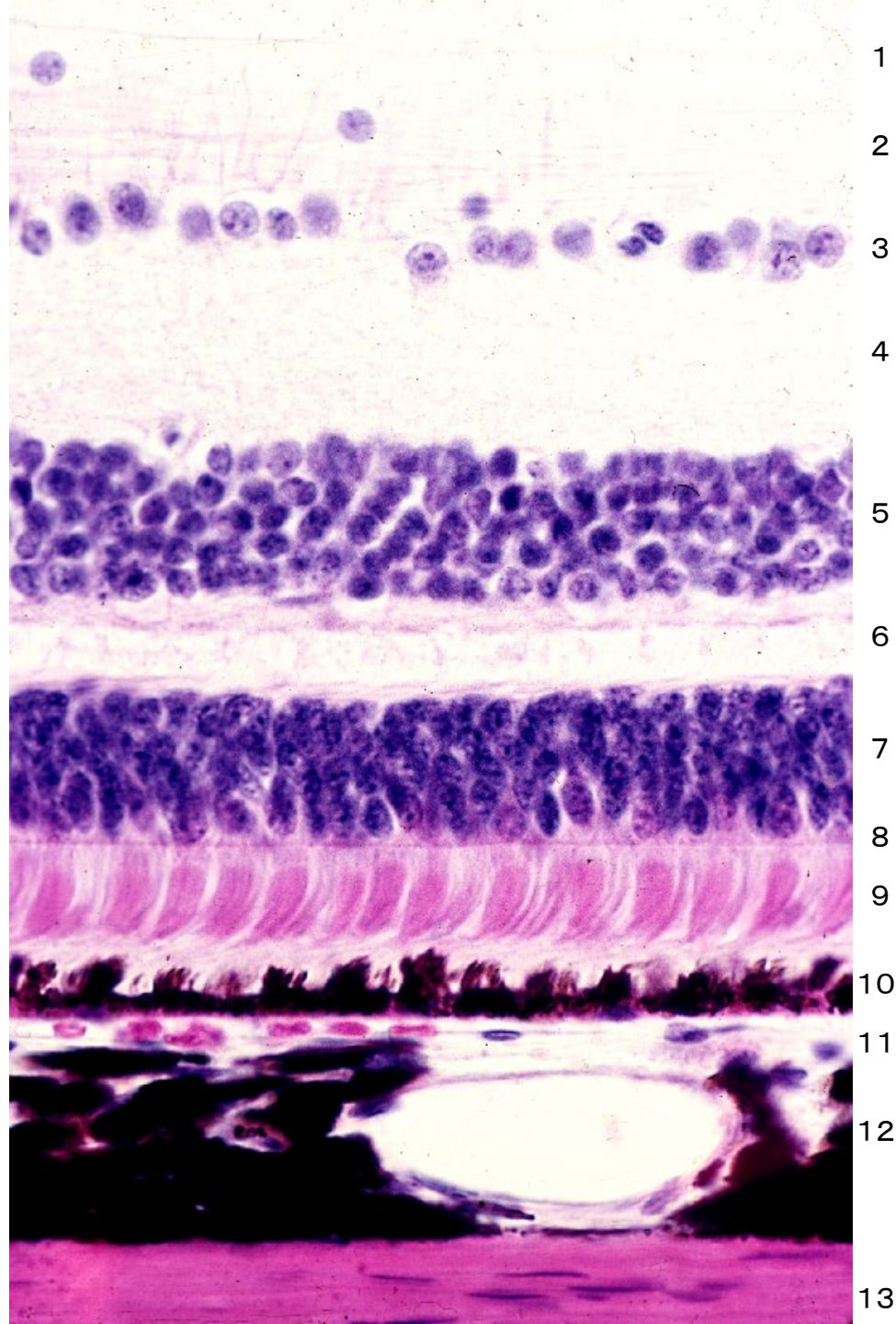
9

10

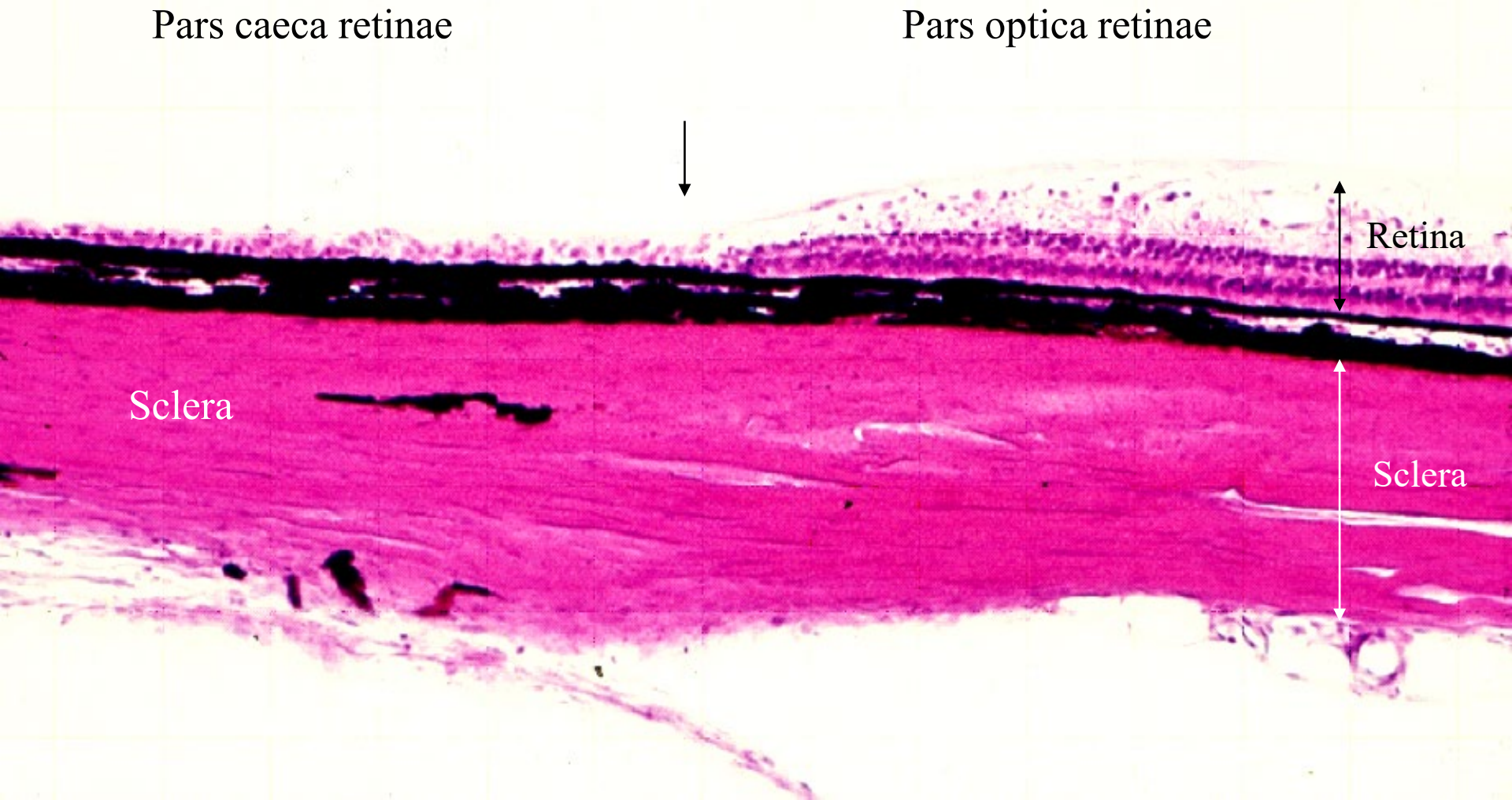
11

12

19-17.
Retina 3.
Monkey,
H-E stain,
x 100.



19-18.
Retina 4.
Monkey,
H-E stain,
x 160.



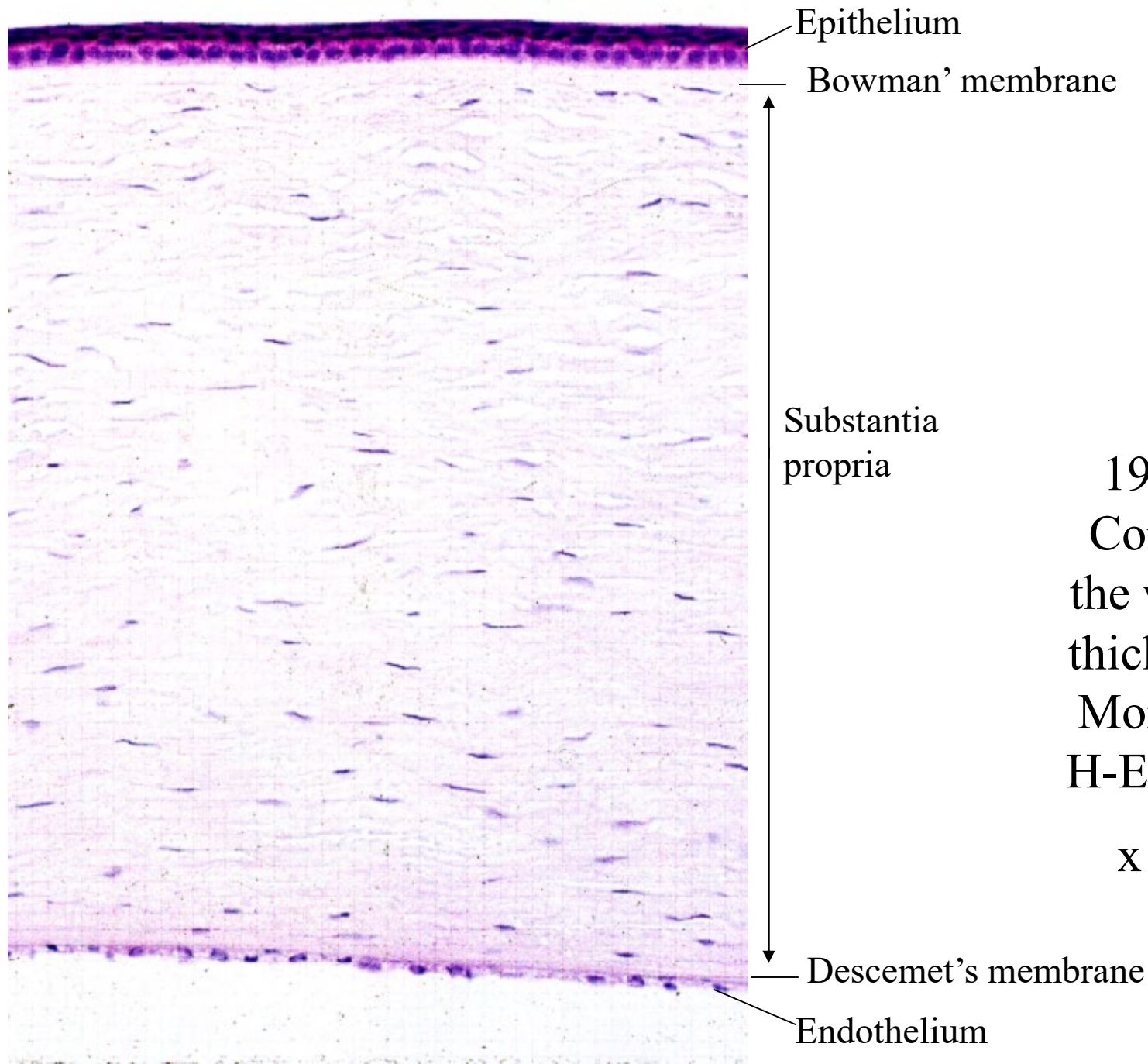
19-19. Retina 5. Ora serrata. Monkey, H-E stain, x 30.



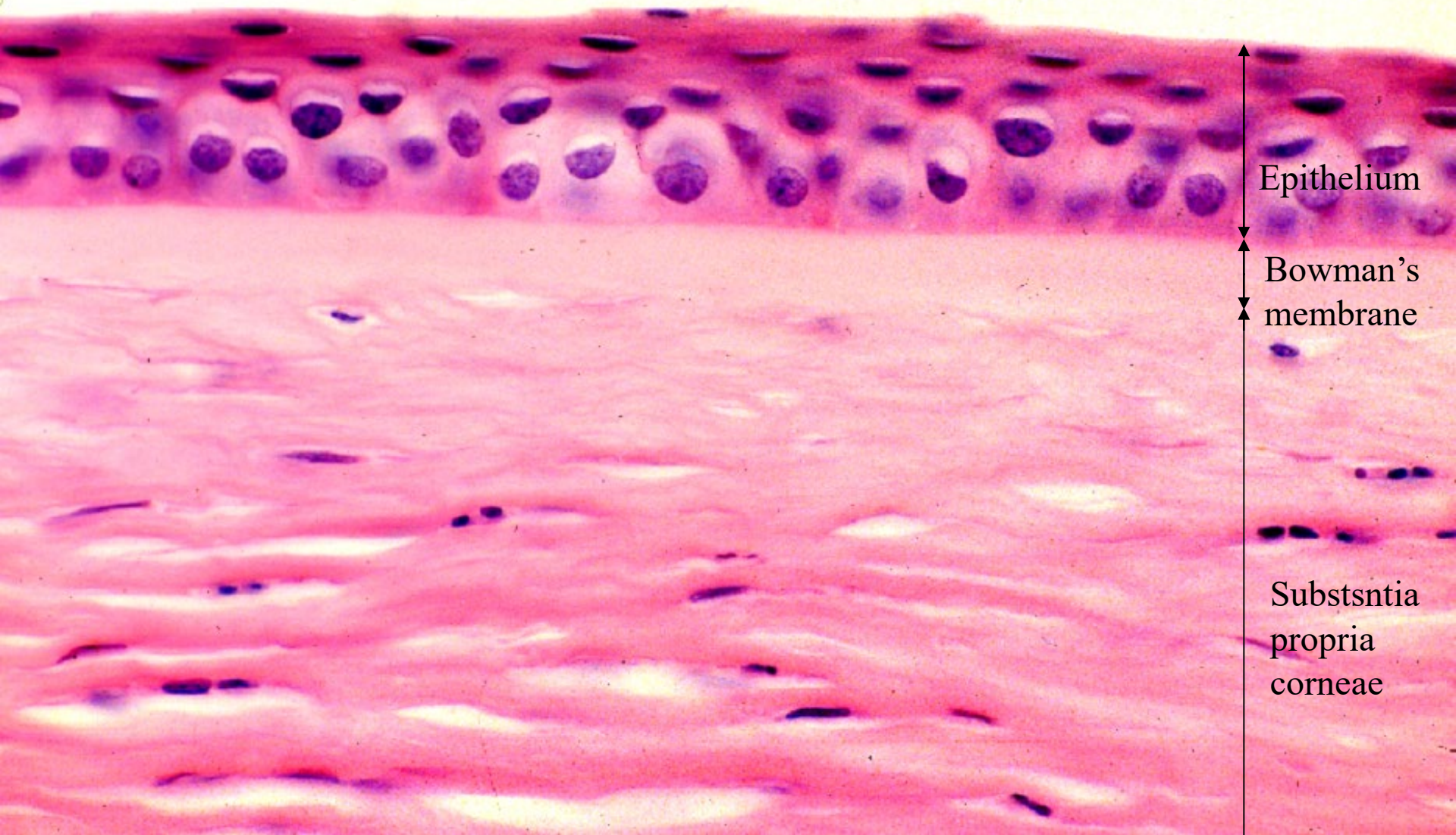
19-20. Chorioidea. Monkey, H-E stain, x 160.



19-21. Papilla n. optici. Monkey, H-E stain, x 10.



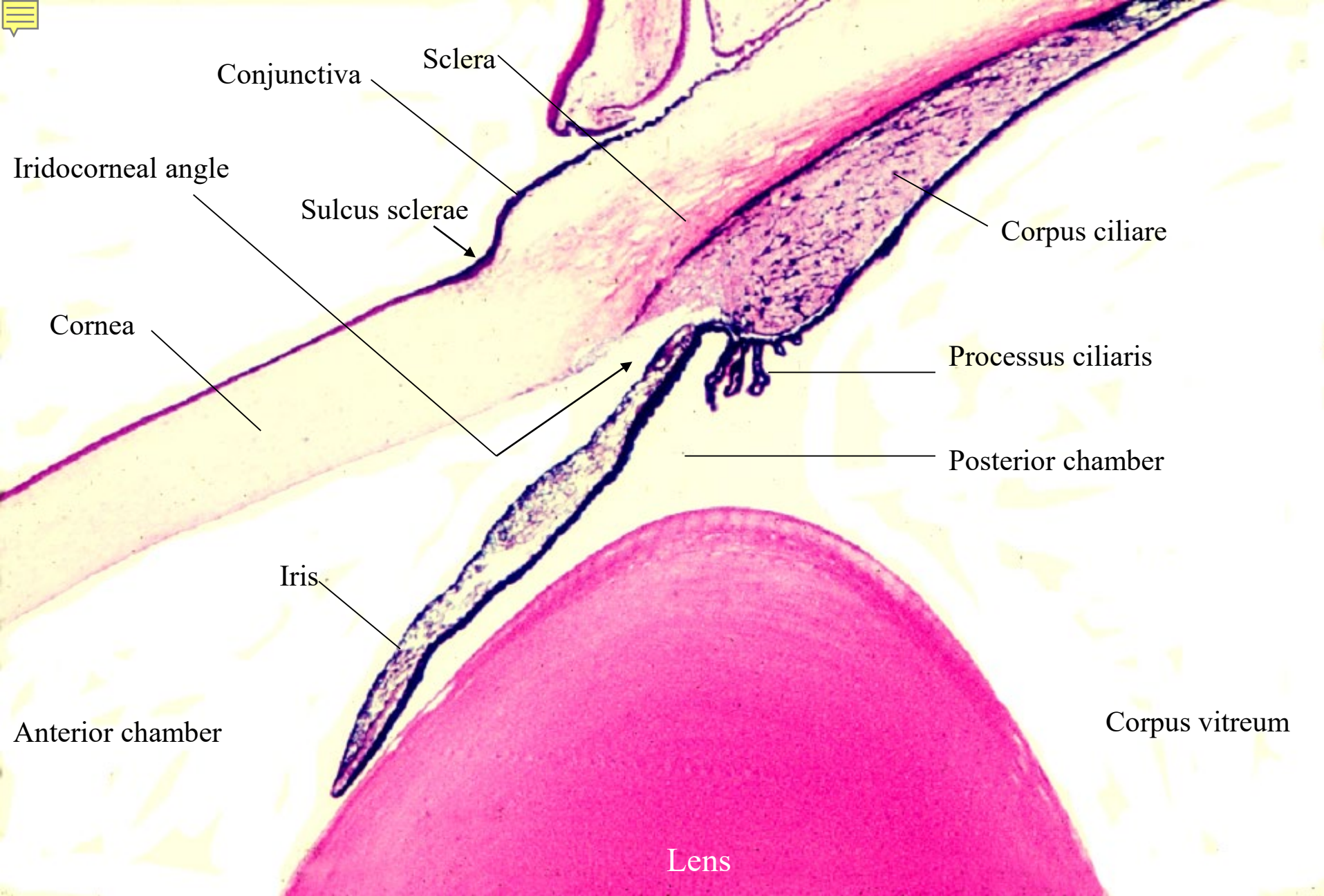
19-22.
Cornea,
the whole
thickness.
Monkey,
H-E stain,
x 64.



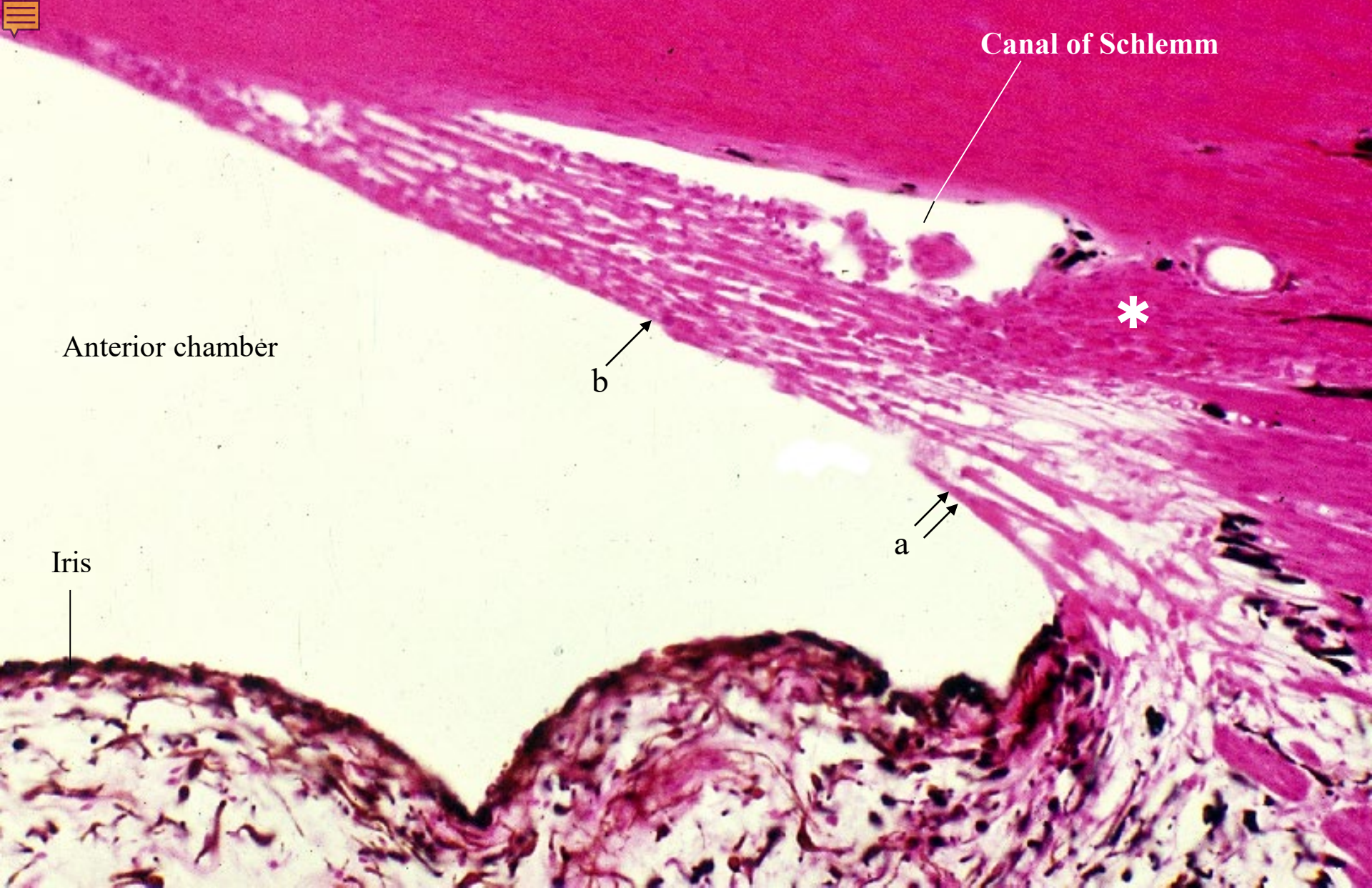
19-23. Anterior portion of cornea. Monkey, H-E stain, x 130.



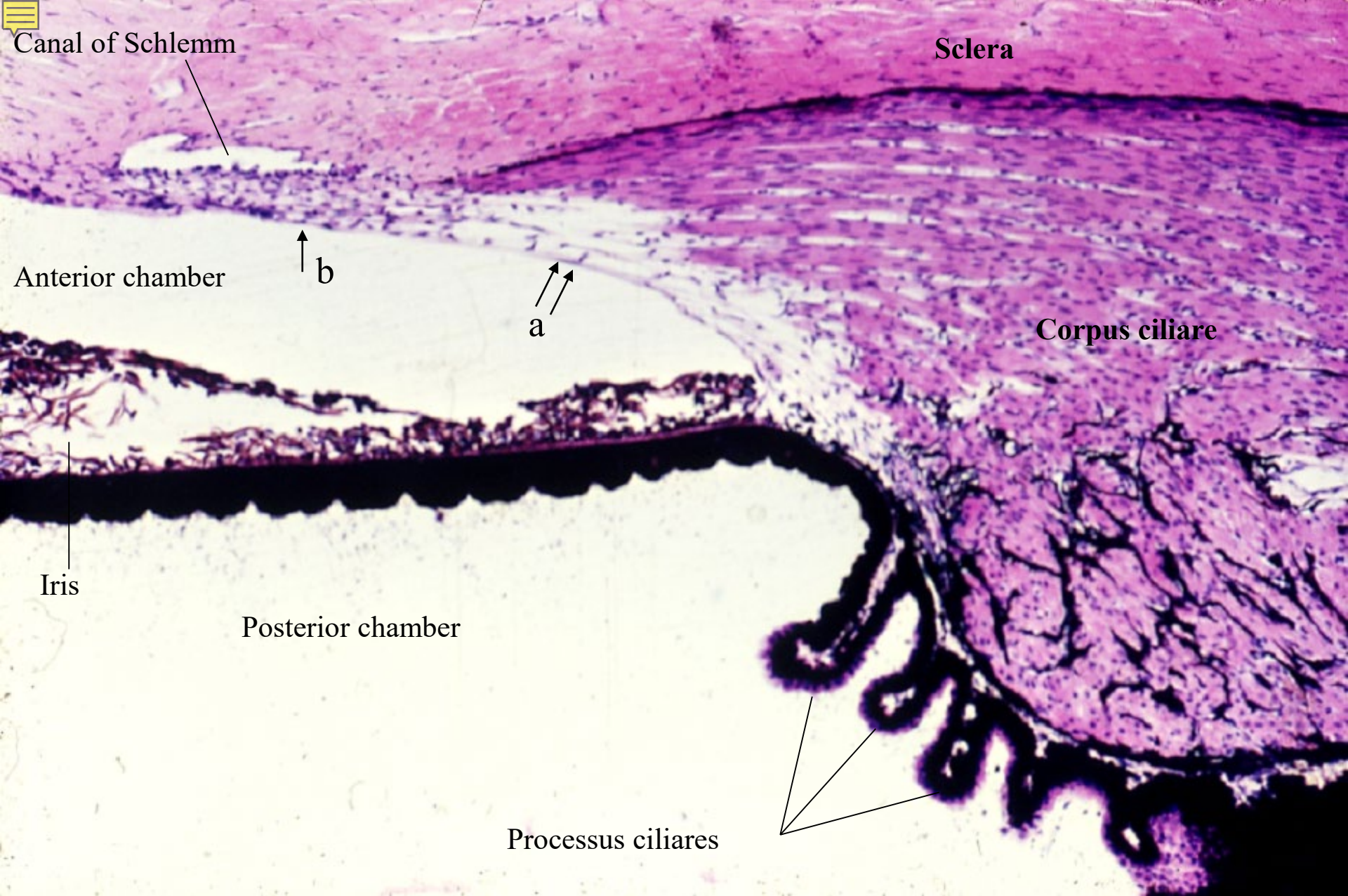
19-24. Posterior portion of cornea. Monkey, H-E stain, x 160.



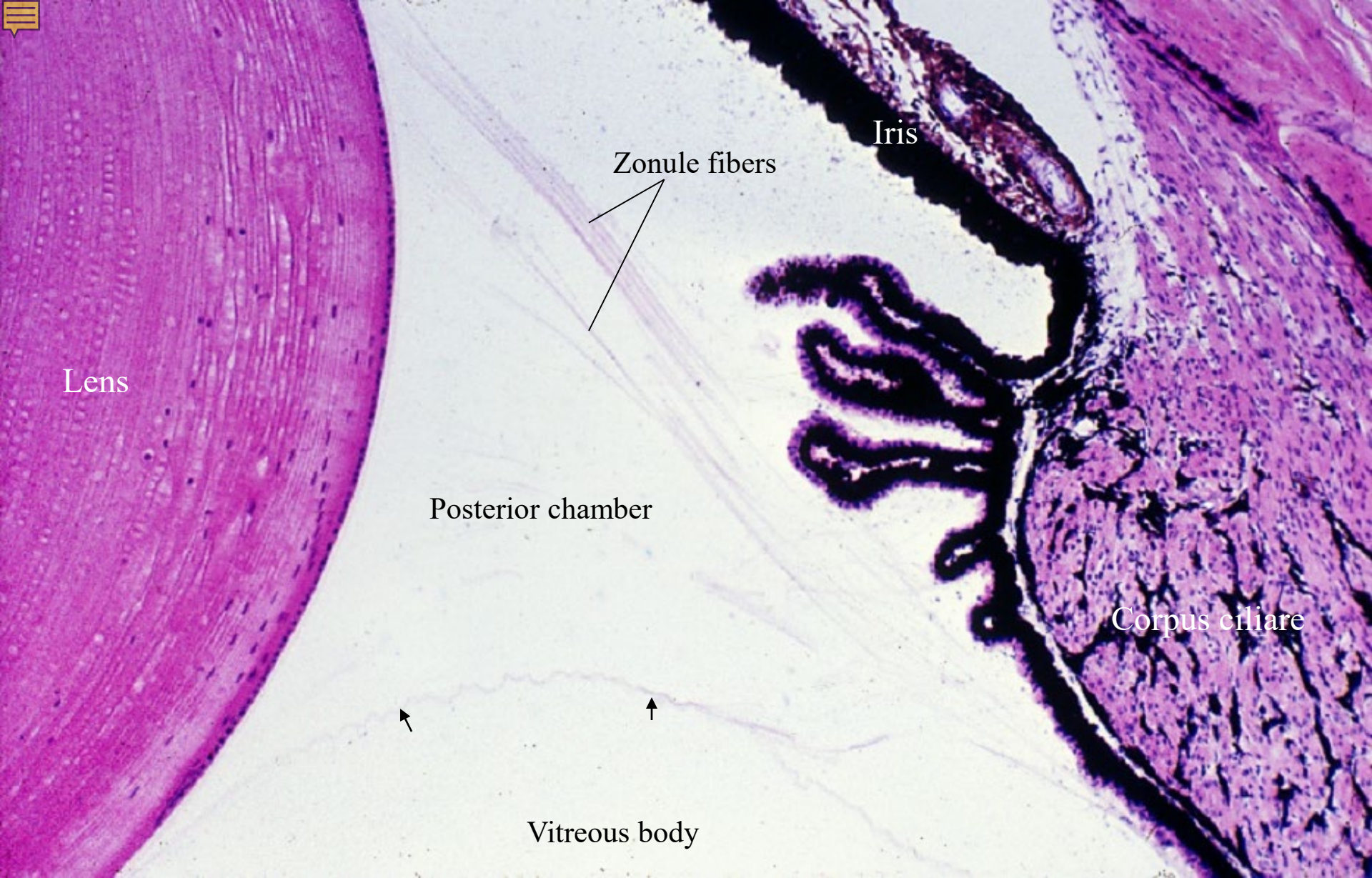
19-25. Iridocorneal angle 1. Monkey, H-E stain, x 6.



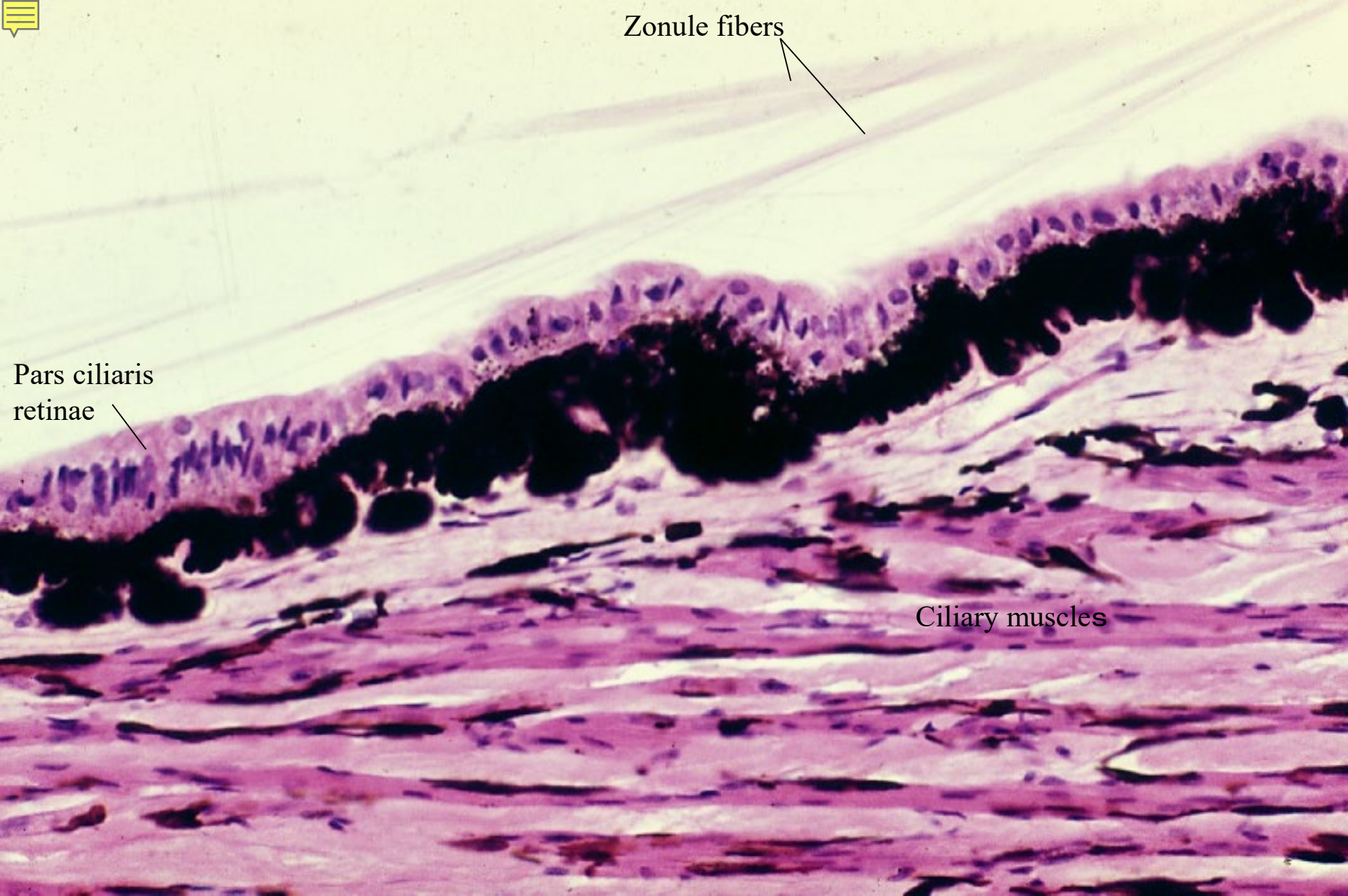
19-26. Iridocorneal angle 2, Canal of Schlemm. Monkey, H-E stain, x 40.



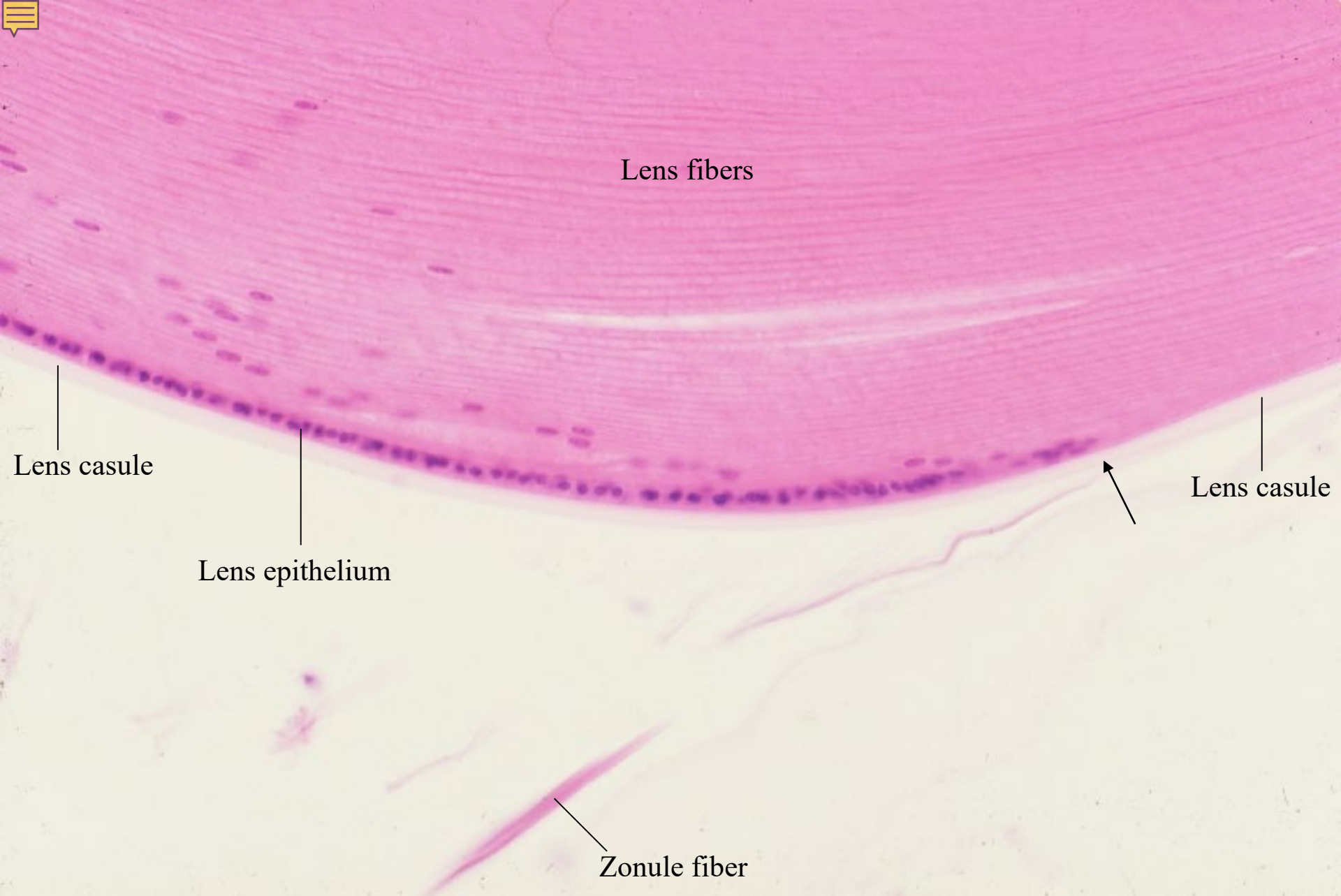
19-27. Iridocorneal angle 3. Corpus ciliare, Processus ciliares and Iris. Monkey, H-E stain, x 30.



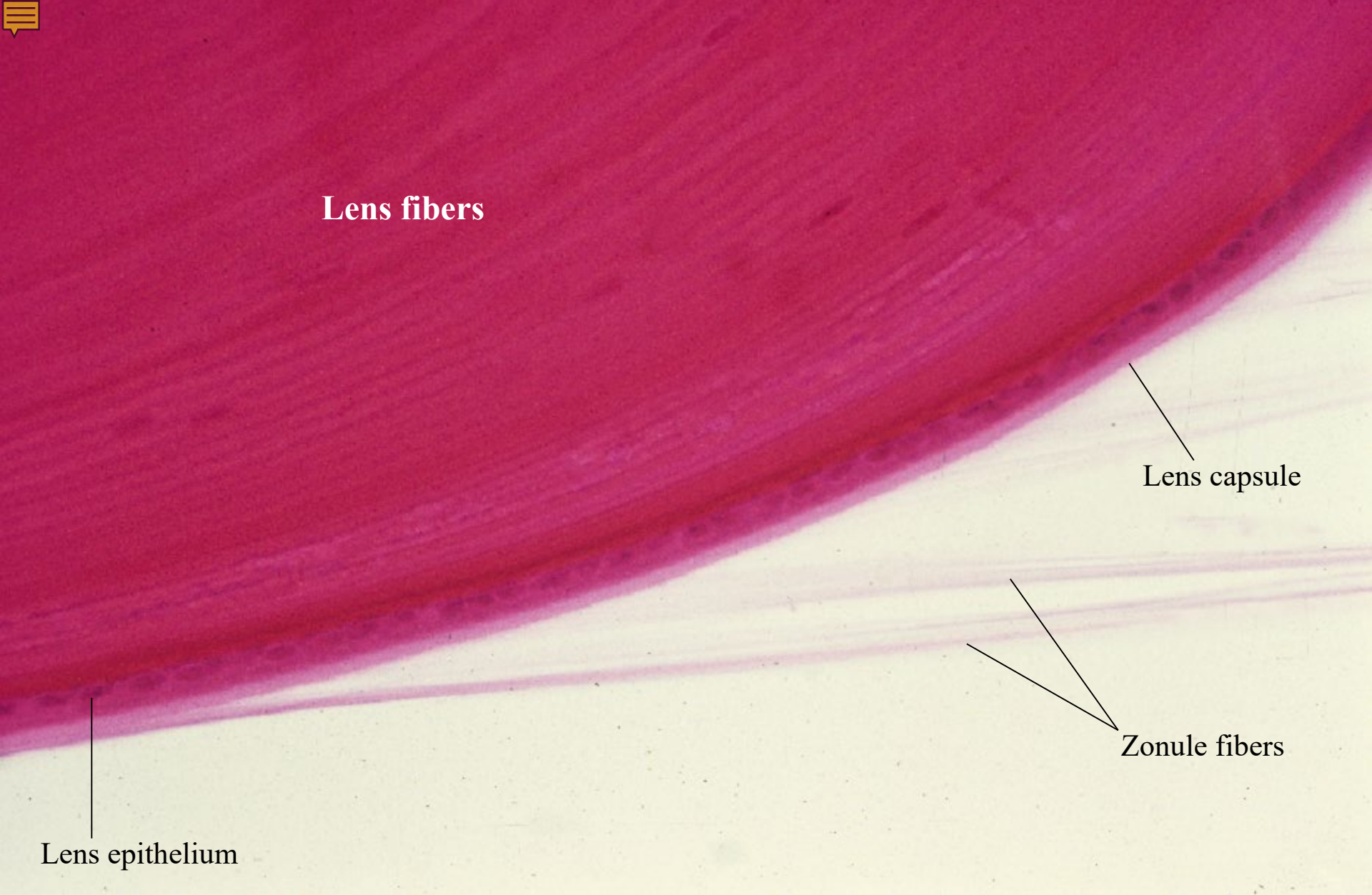
19-28. Corpus ciliare, iris, and lens. Monkey, H-E stain, x 25.



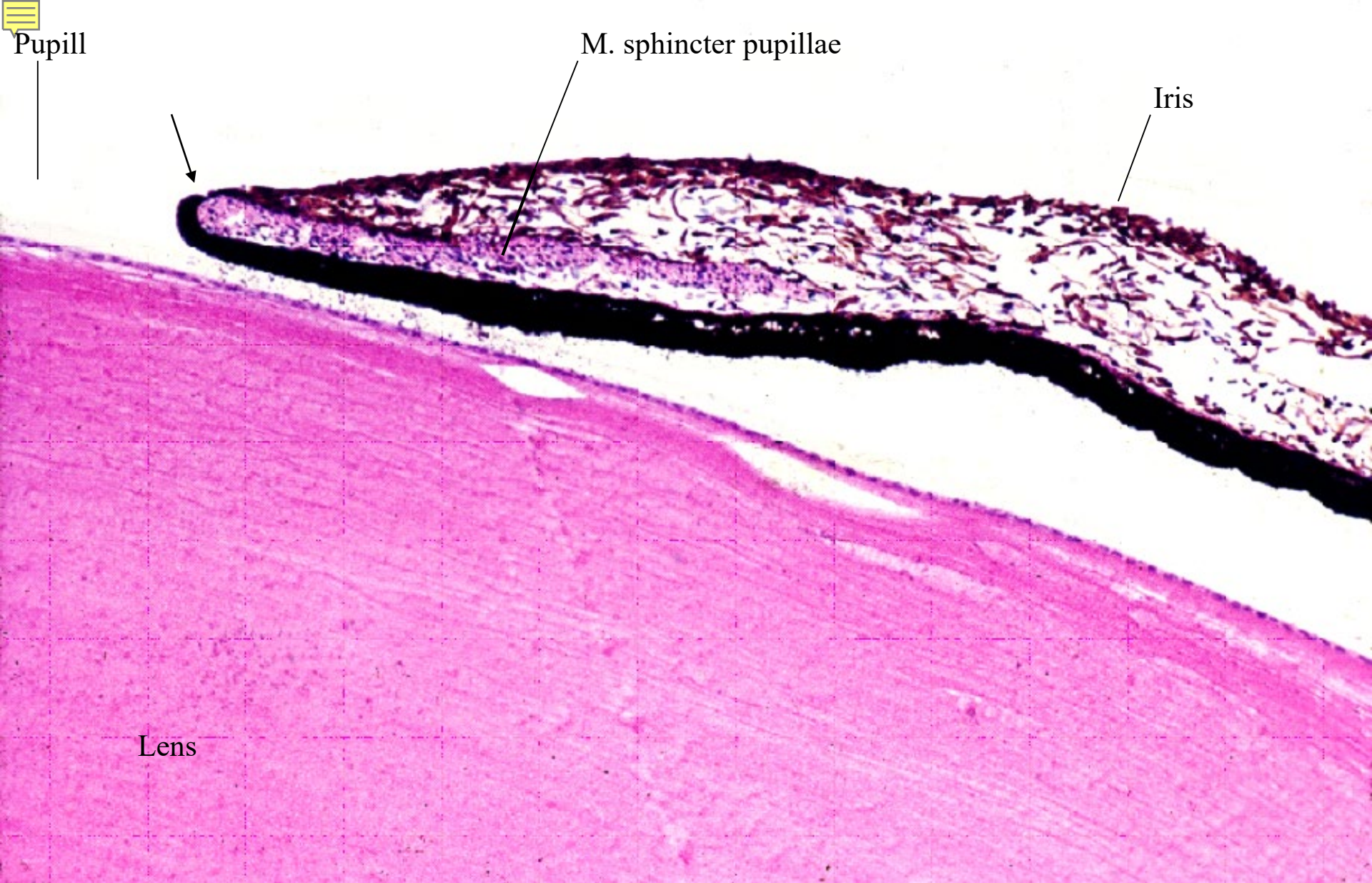
19-29. Pars ciliaris retinae. Monkey, H-E stain, x 64.



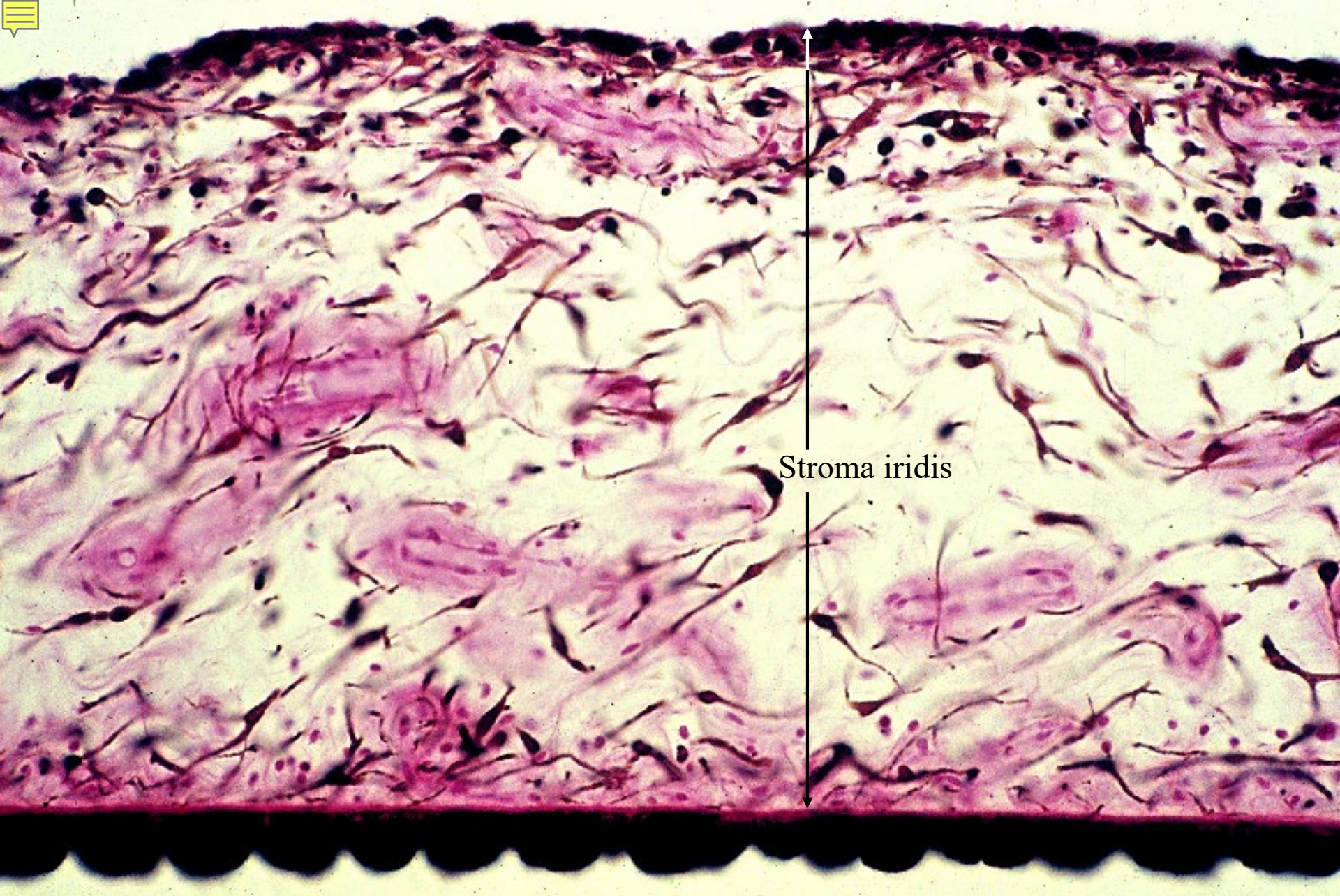
19-30. Equatorial portion of lens, 2. Monkey, H-E stain, x 50.



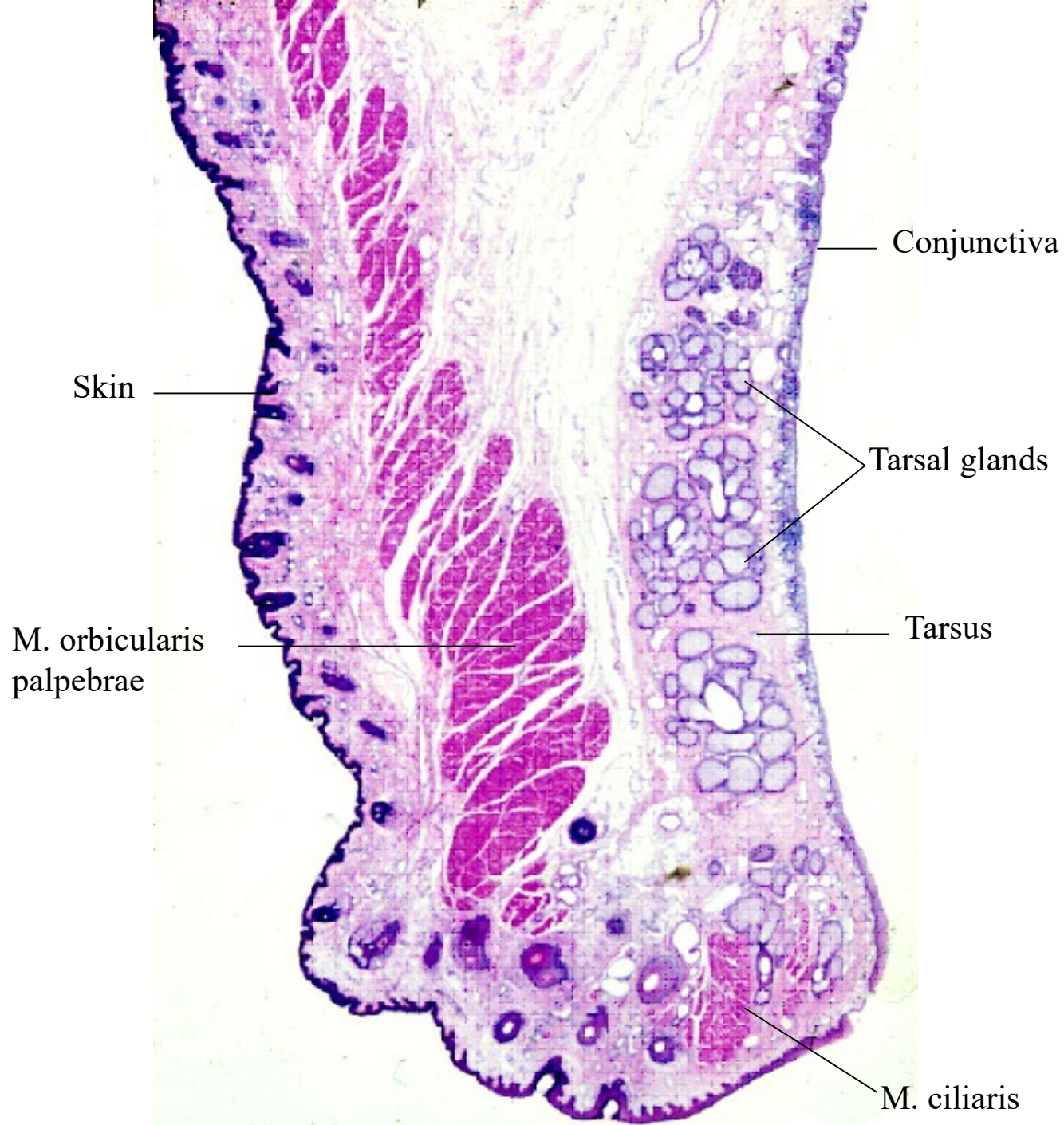
19-31. Lens and zonule fibers. Monkey, H-E stain, x 100.



19-32. Lens and pupillar edge of iris. Monkey, H-E stain, x 30.



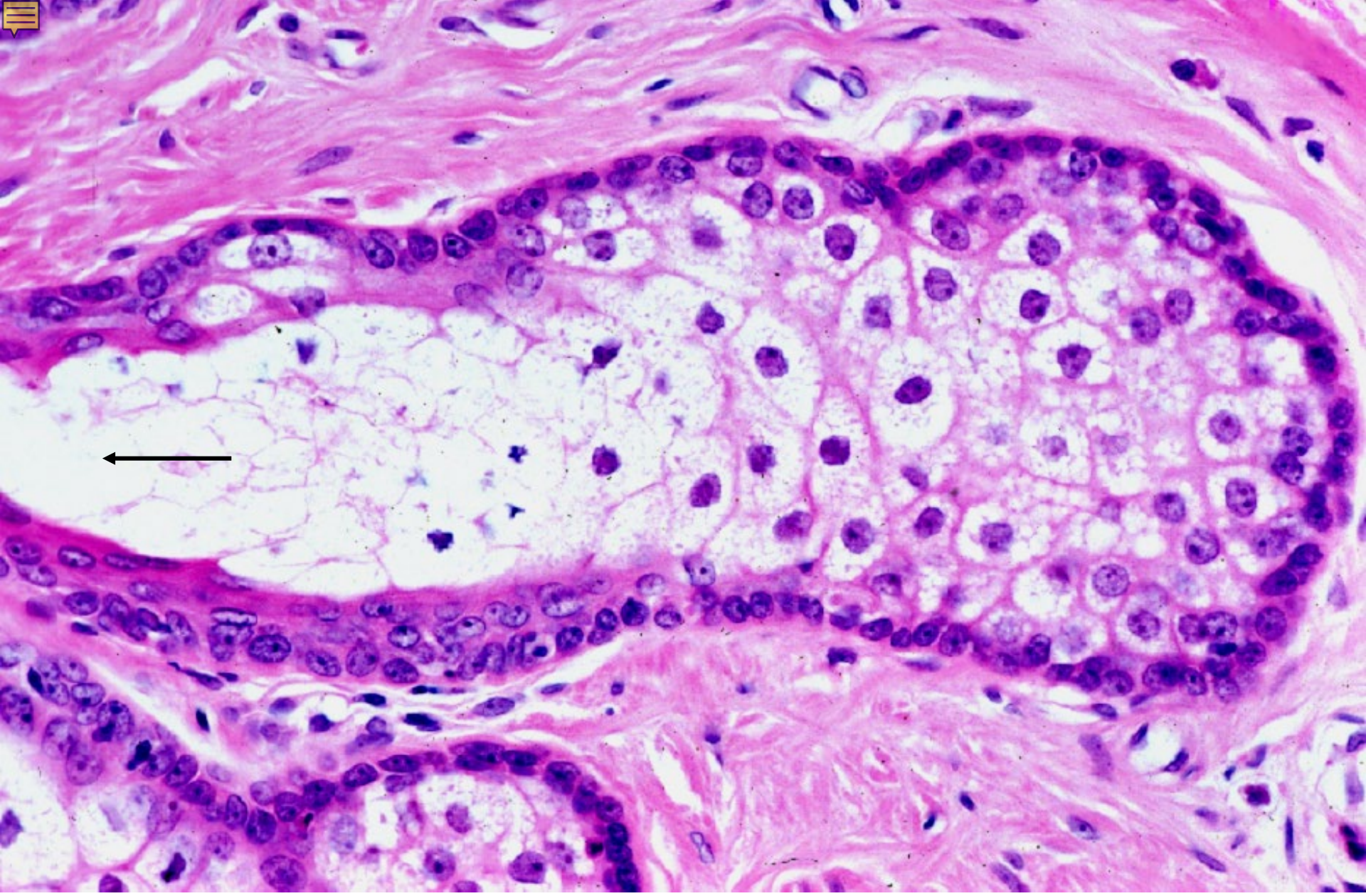
19-33. Iris, the whole thickness. Monkey, H-E stain, x 50.



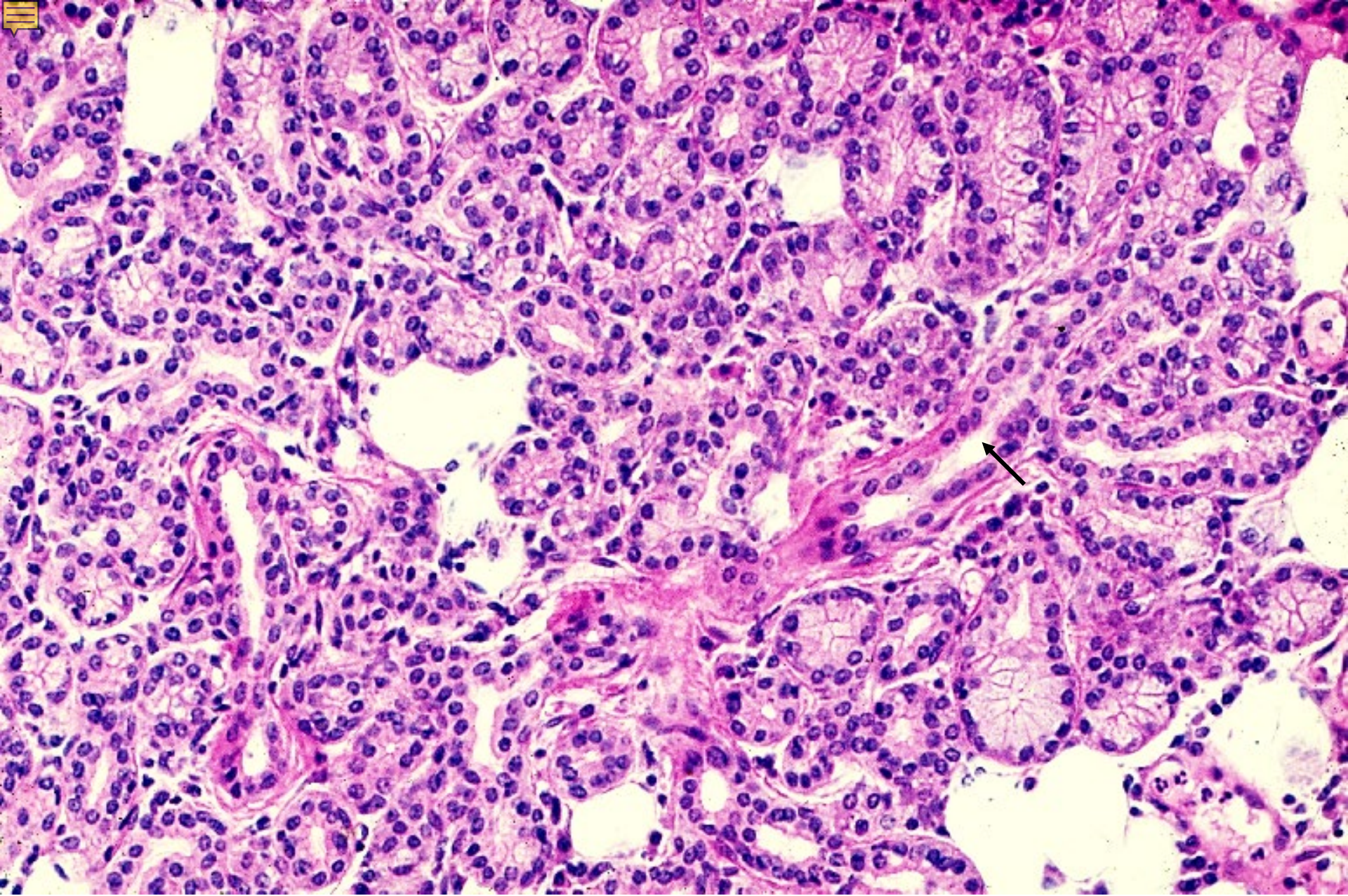
19-35.
Eyelid,
sagittal section.
Human,
H-E stain,
x 4.0.



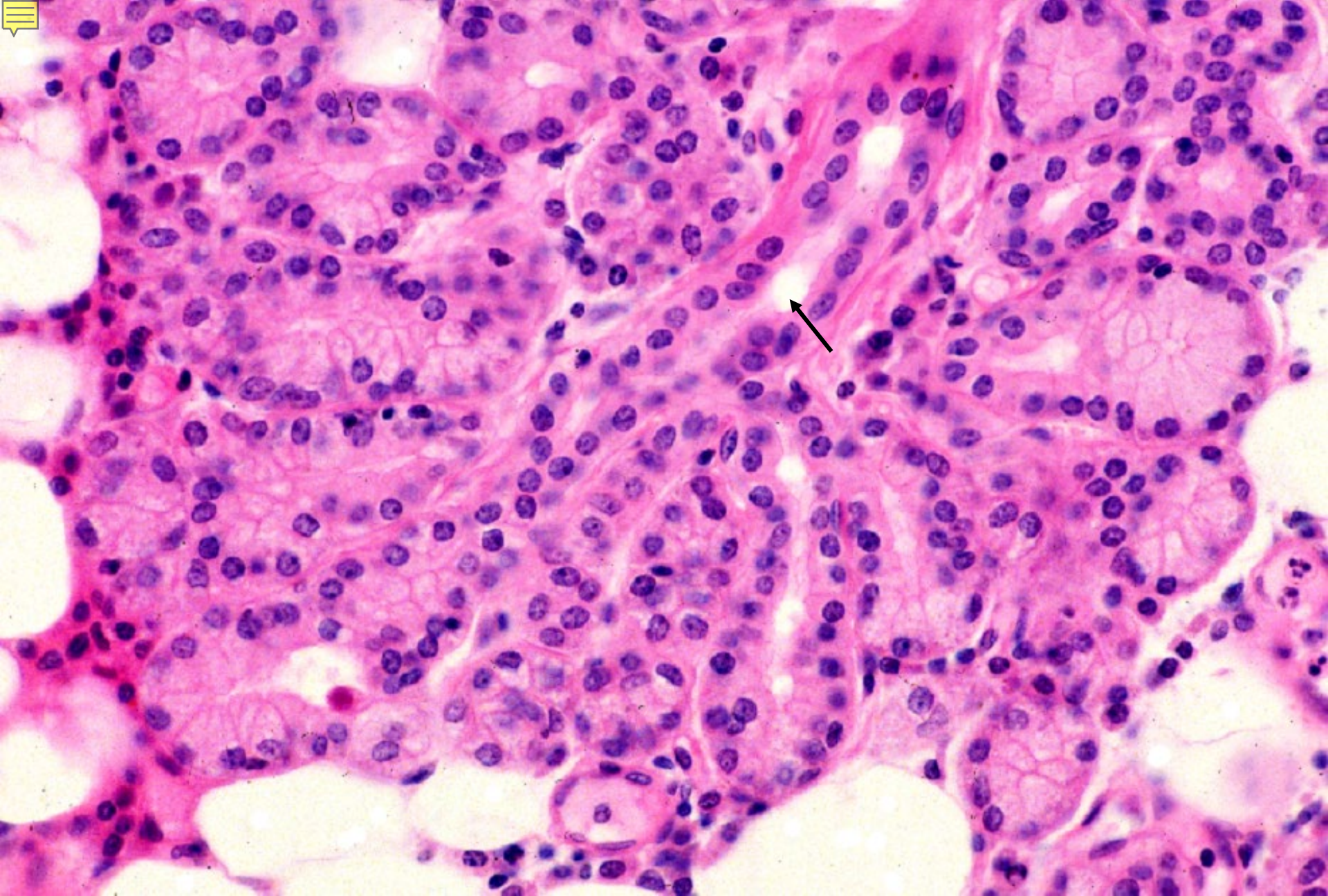
19-36. Tarsal glands. Human, H-E stain, x 10.



19-37. Glandula tarsalis. Human, H-E stain, x 100.



19-38. Lacrimal gland 1. Human, H-E stain, x 64.



19-39. Lacrimal gland 2. Human, H-E stain, x 100.