



## Data base of Histology Color slides

Mizoguchi, Fumio

---

(Issue Date)

2015-05-04

(Resource Type)

learning object

(Version)

Version of Record

(Rights)

1. 利用者による利用の範囲は、著作権法に定める私的利用の範囲とする。2. 研究成果を利用者が利用した結果について、許諾者はその責任を負わない。  
私的利用の範囲を超える二次利用（印刷物、ウェブサイト、発表資料等への転載など）については、利用希望者は附属図書館（<https://lib.kobe-u.ac.jp/da/secondaryuse/#secondaryuse-...>）

(URL)

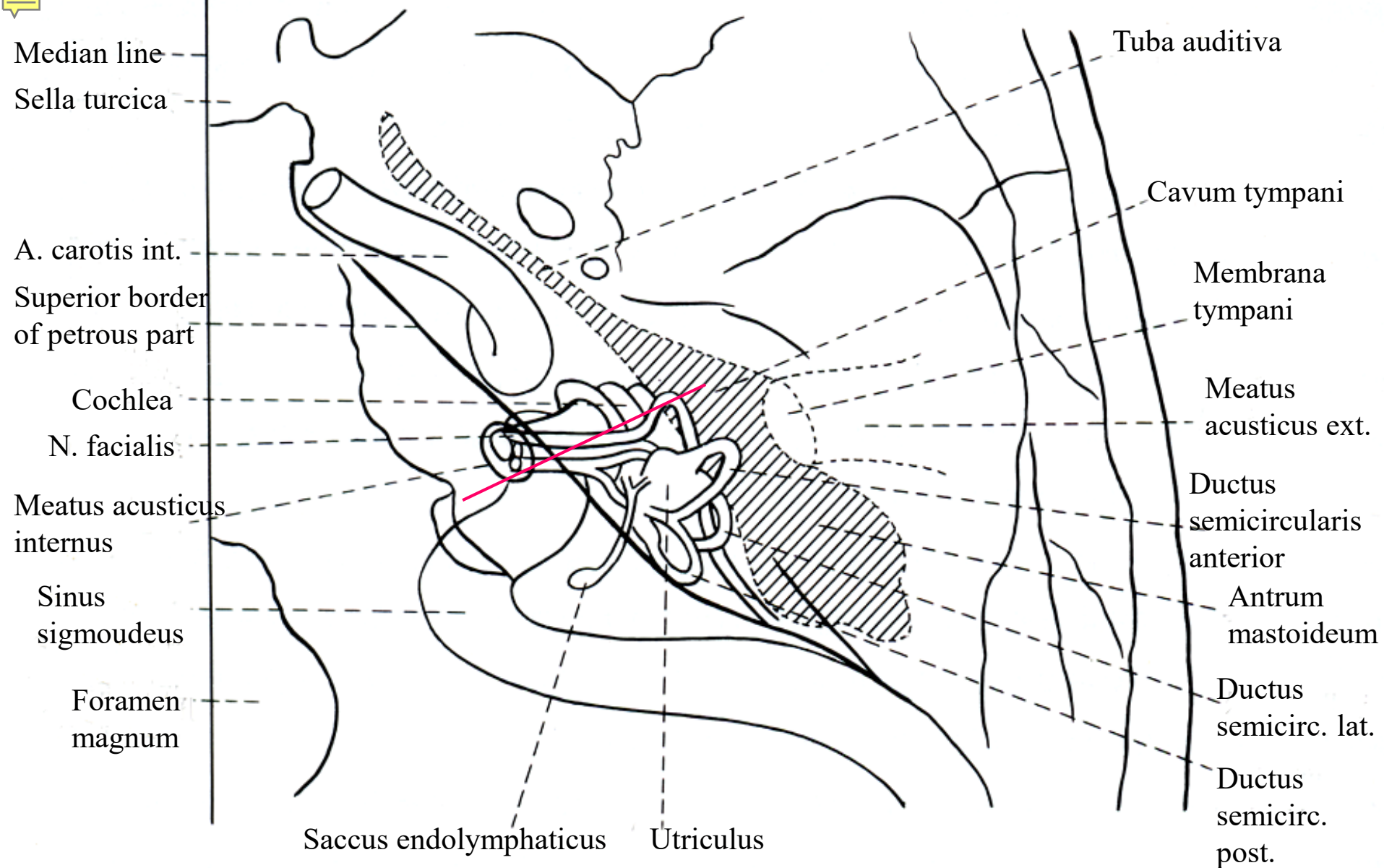
<https://hdl.handle.net/20.500.14094/90009617>



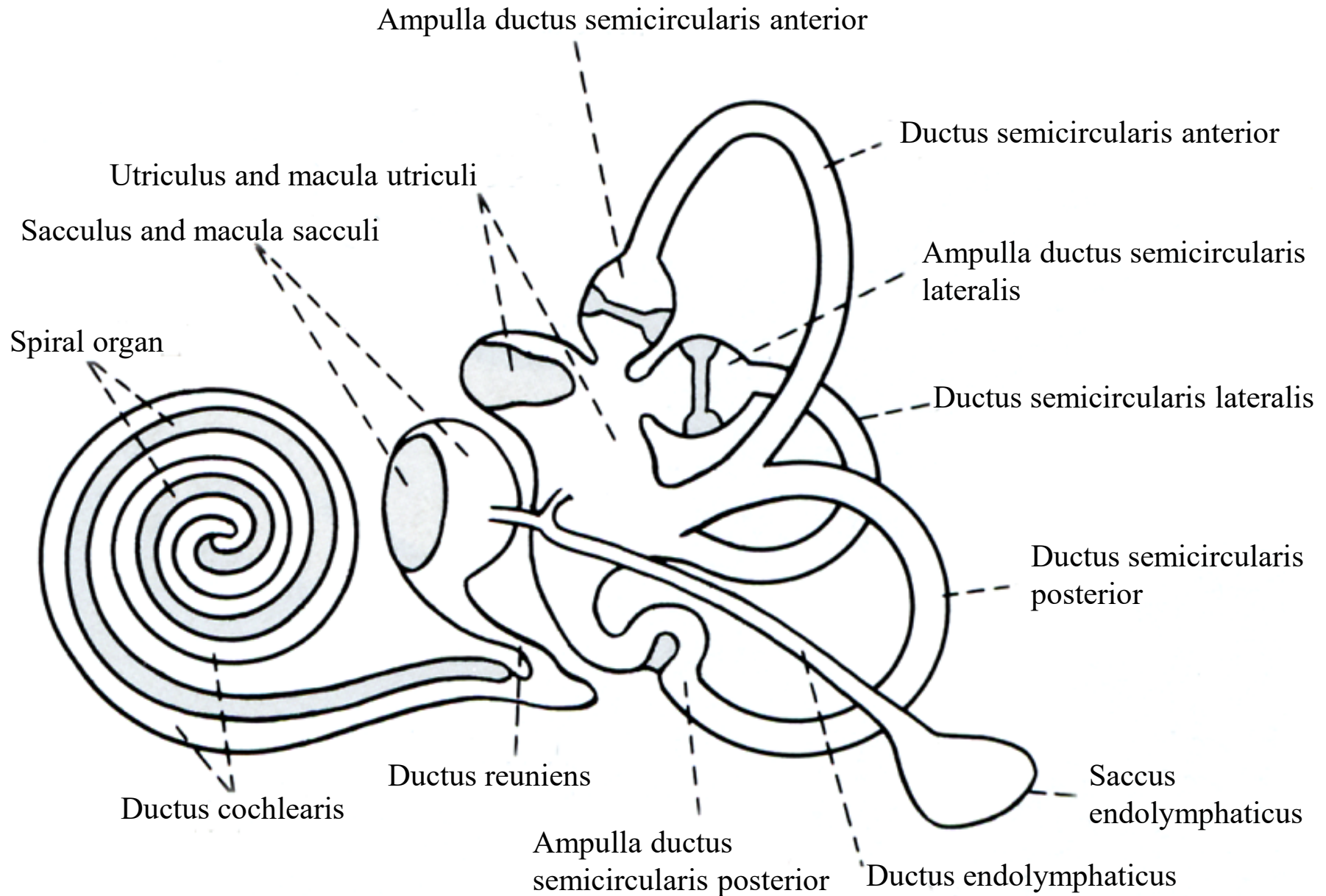


20

The ear  
(Vestibulo-acoustic  
Organs)



20-01. Location of vestibulo-acoustic organs in the temporal bone (Scheme).



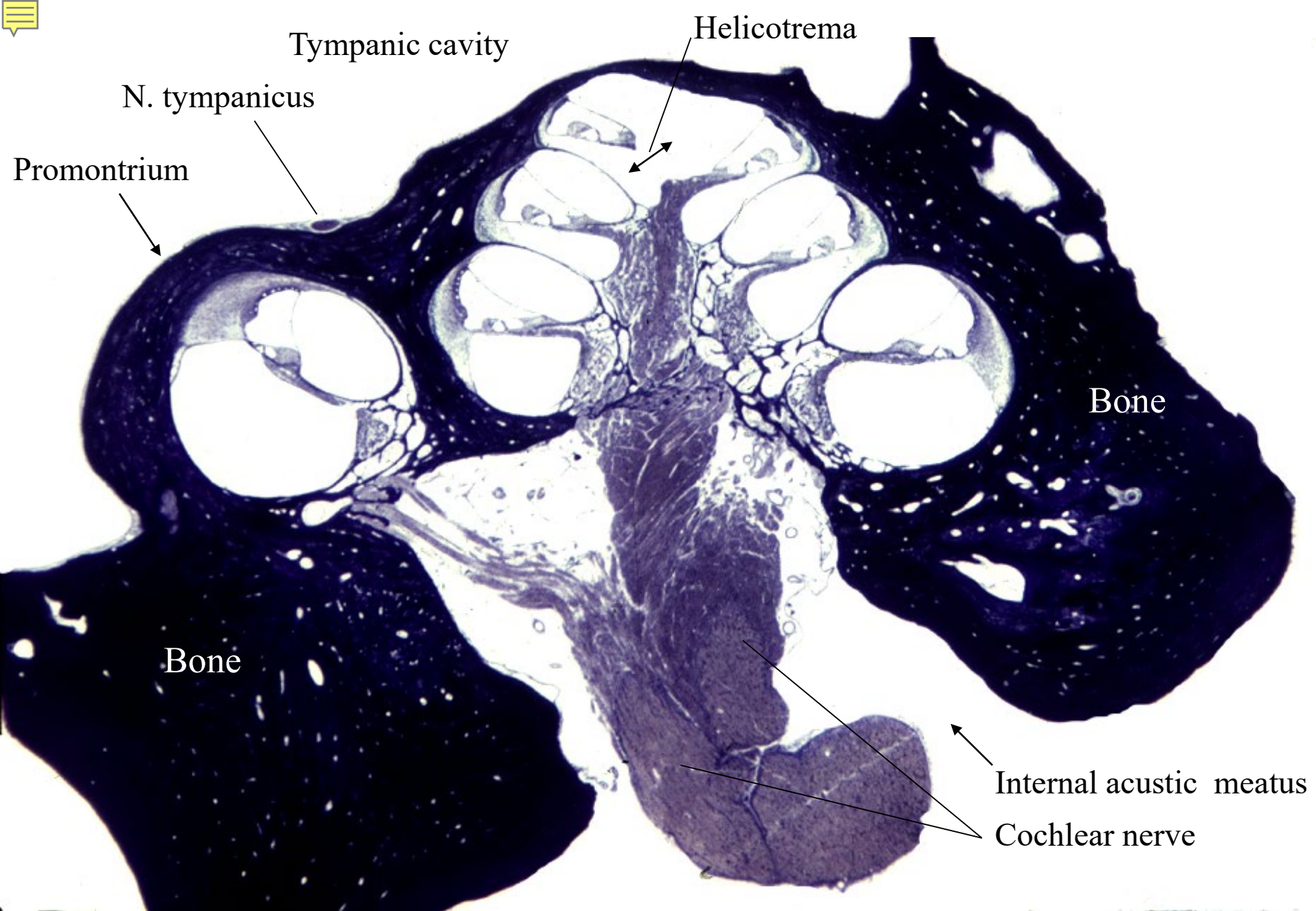
20-02. Scheme showing the structure of membranous labyrinth.



20-001

Cochlea, and  
External  
and Middle Ear



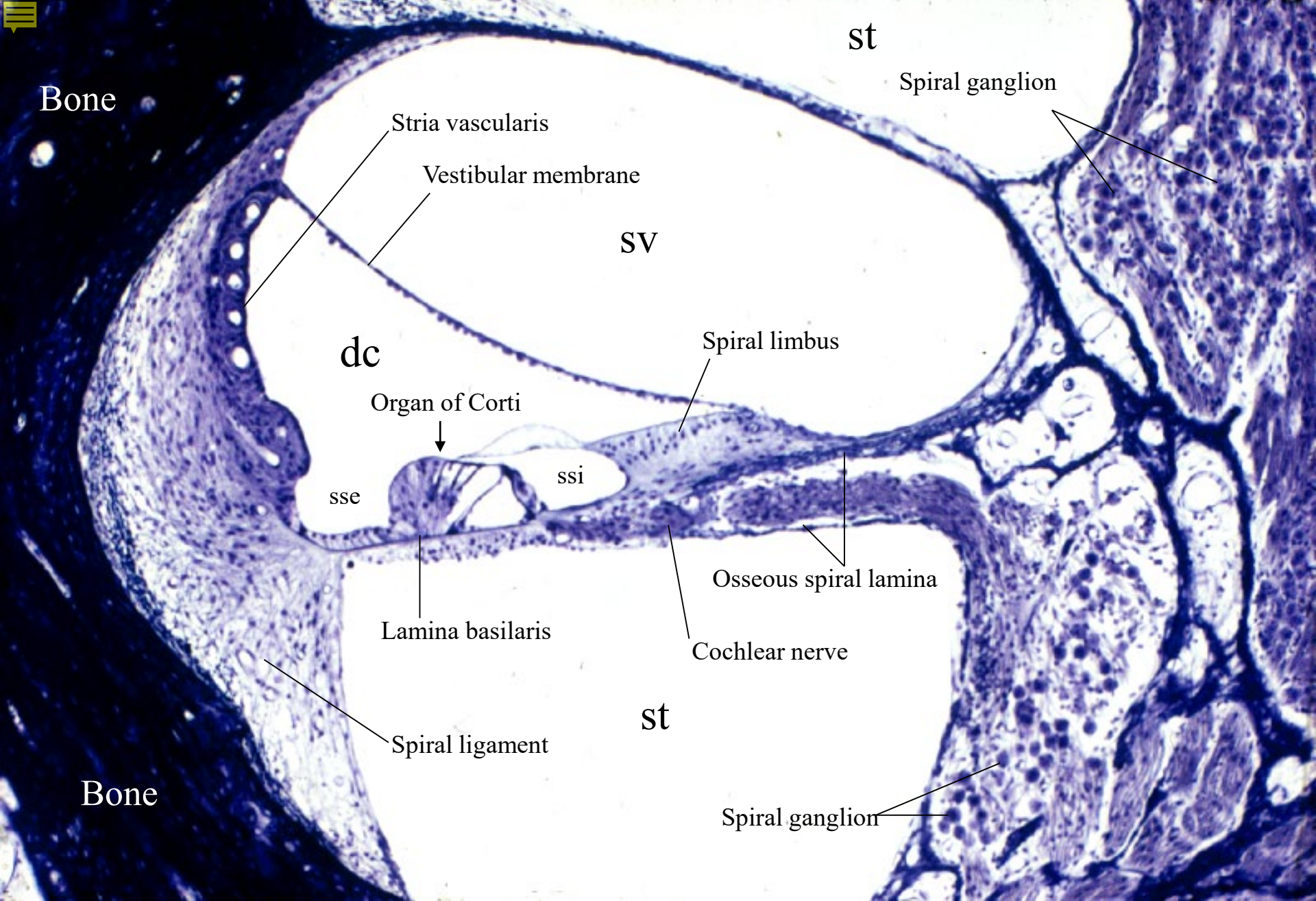


20-03. Cochlea, vertical section, general view 1. Monkey, Held's hematoxylin stain, x 4.



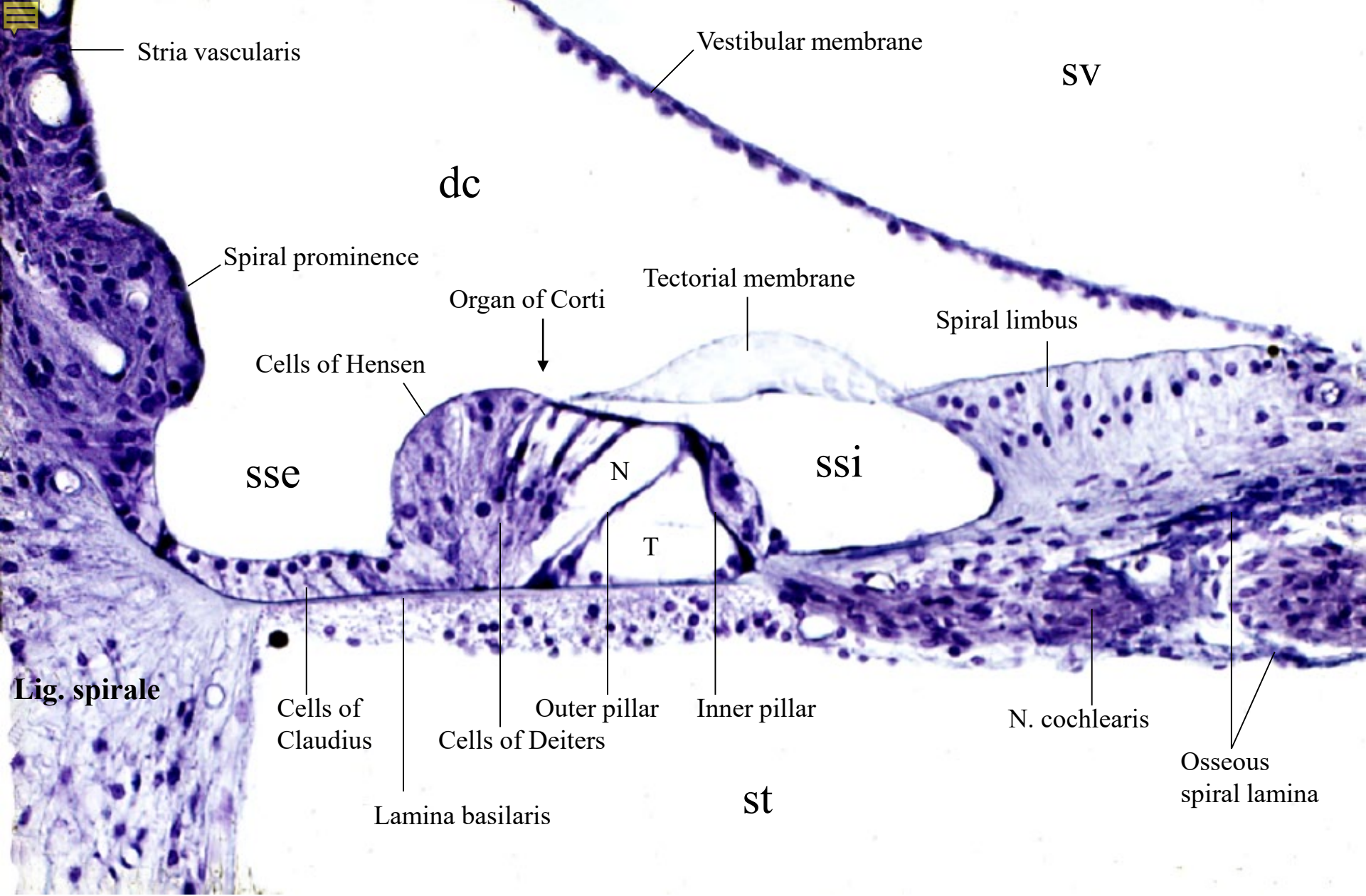
20-04. Cochlea, vertical section, general view 2. Monkey, Held's hematoxylin stain, x 10.



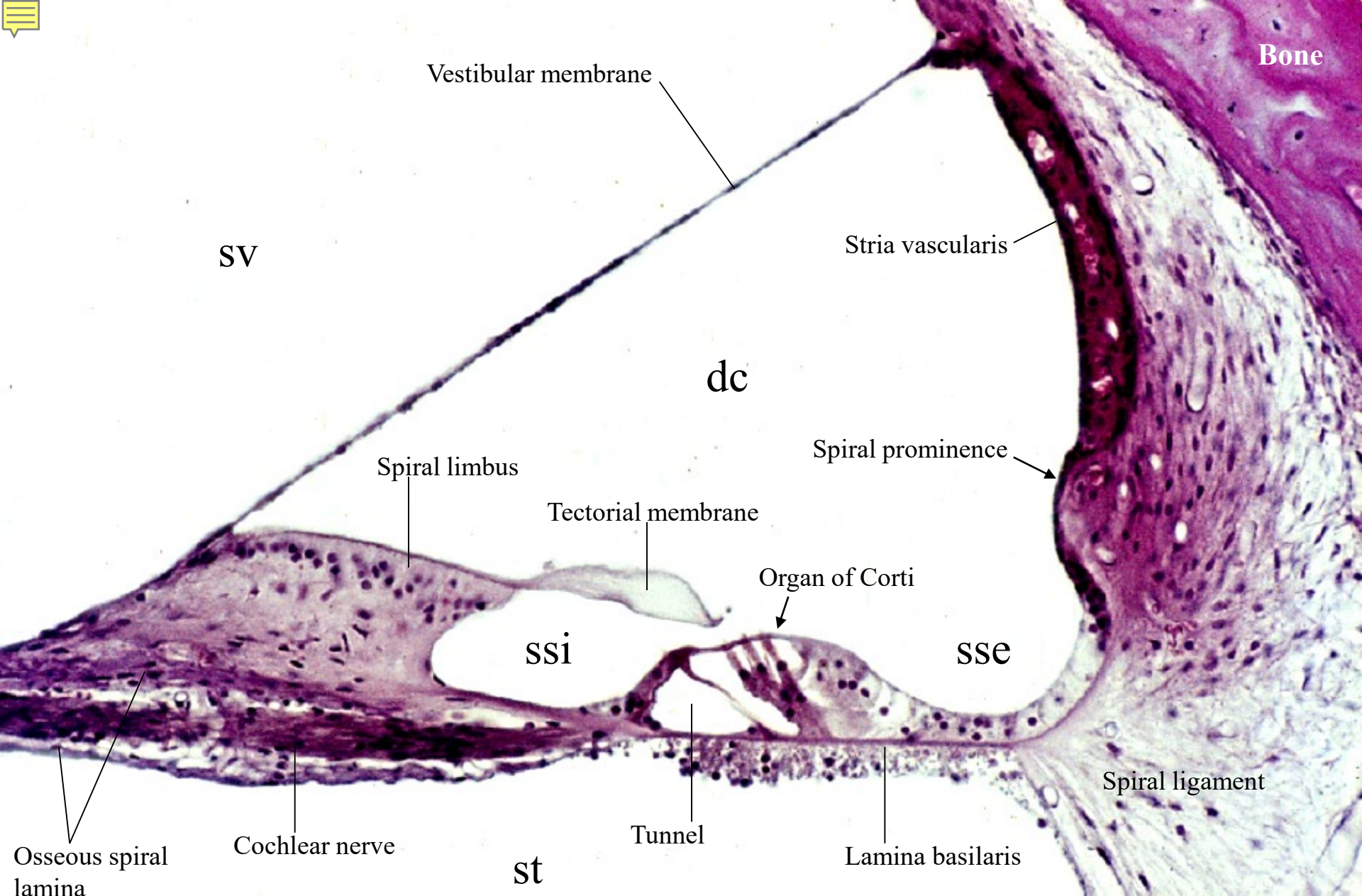


20-05. Canalis cochlearis, vertical section 3. Monkey, Held's hematoxylin stain, x 25.





20-06. Cochlear duct and organ of Corti 1. Monkey, Held's hematoxylin stain, x 64.



20-07. Cochlear duct and organ of Corti 2. Monkey, H-E stain, x 50.



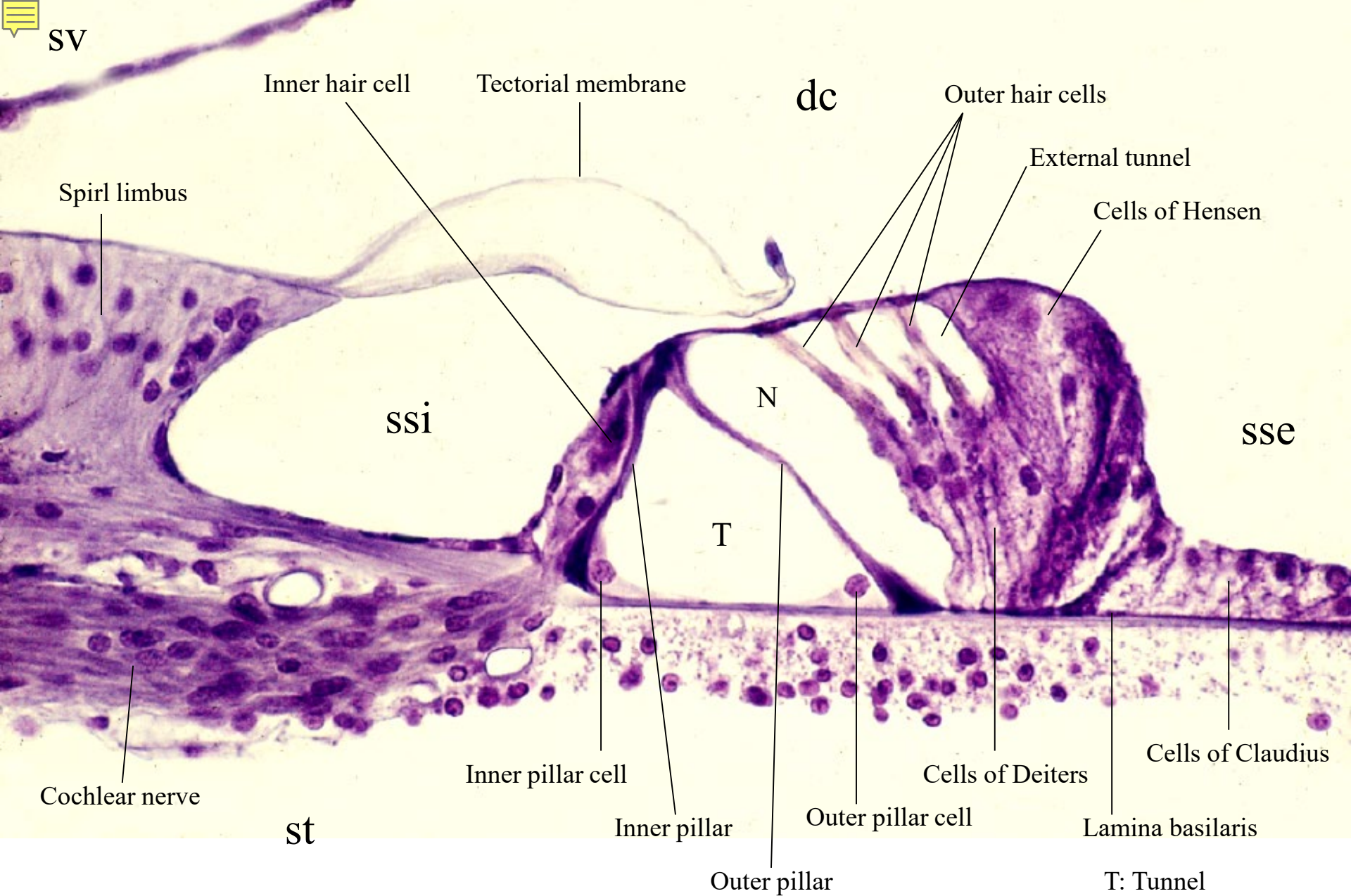


20-08. Cochlear duct and organ of Corti 3. Monkey, H-E stain, x 64.

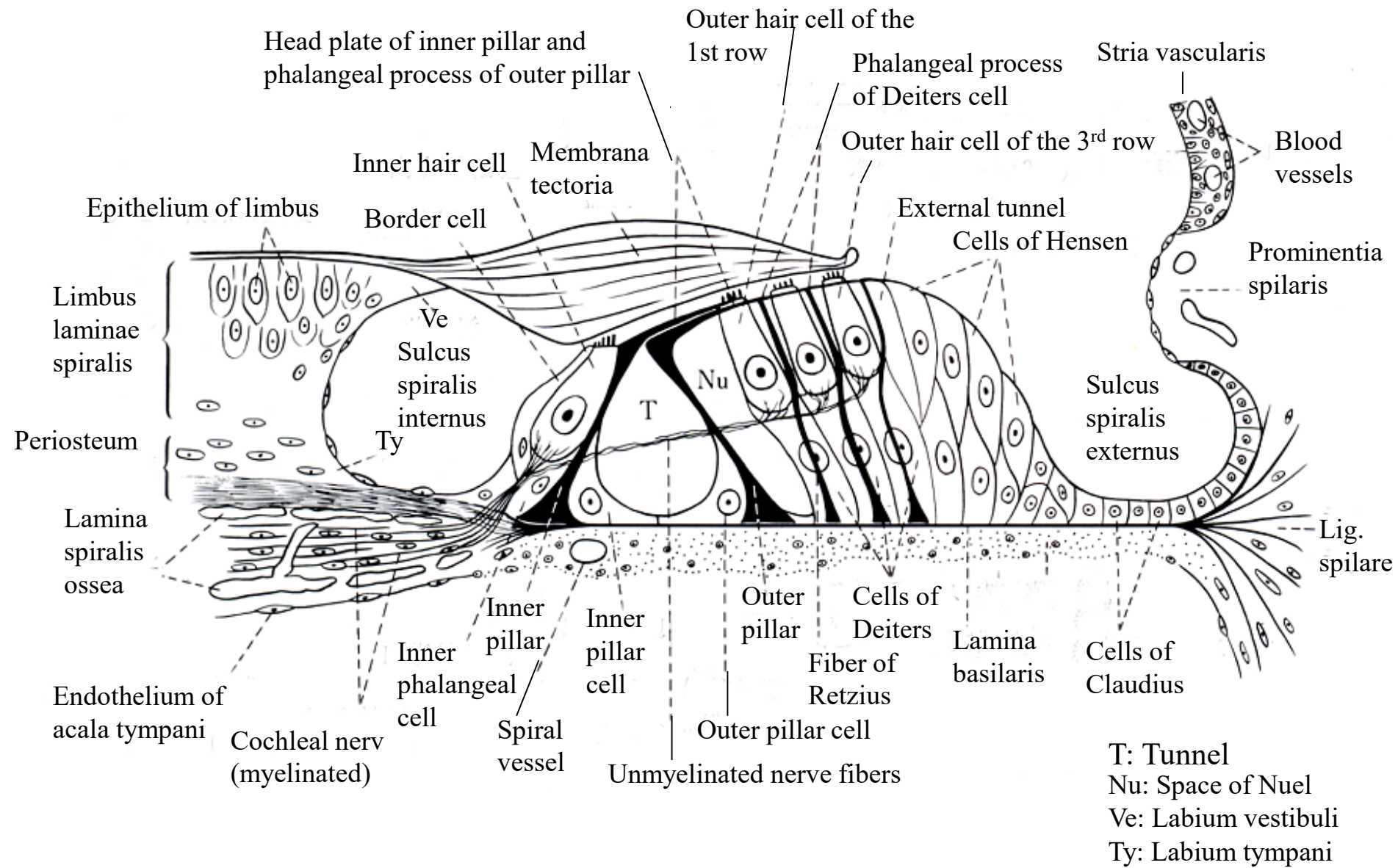




SV

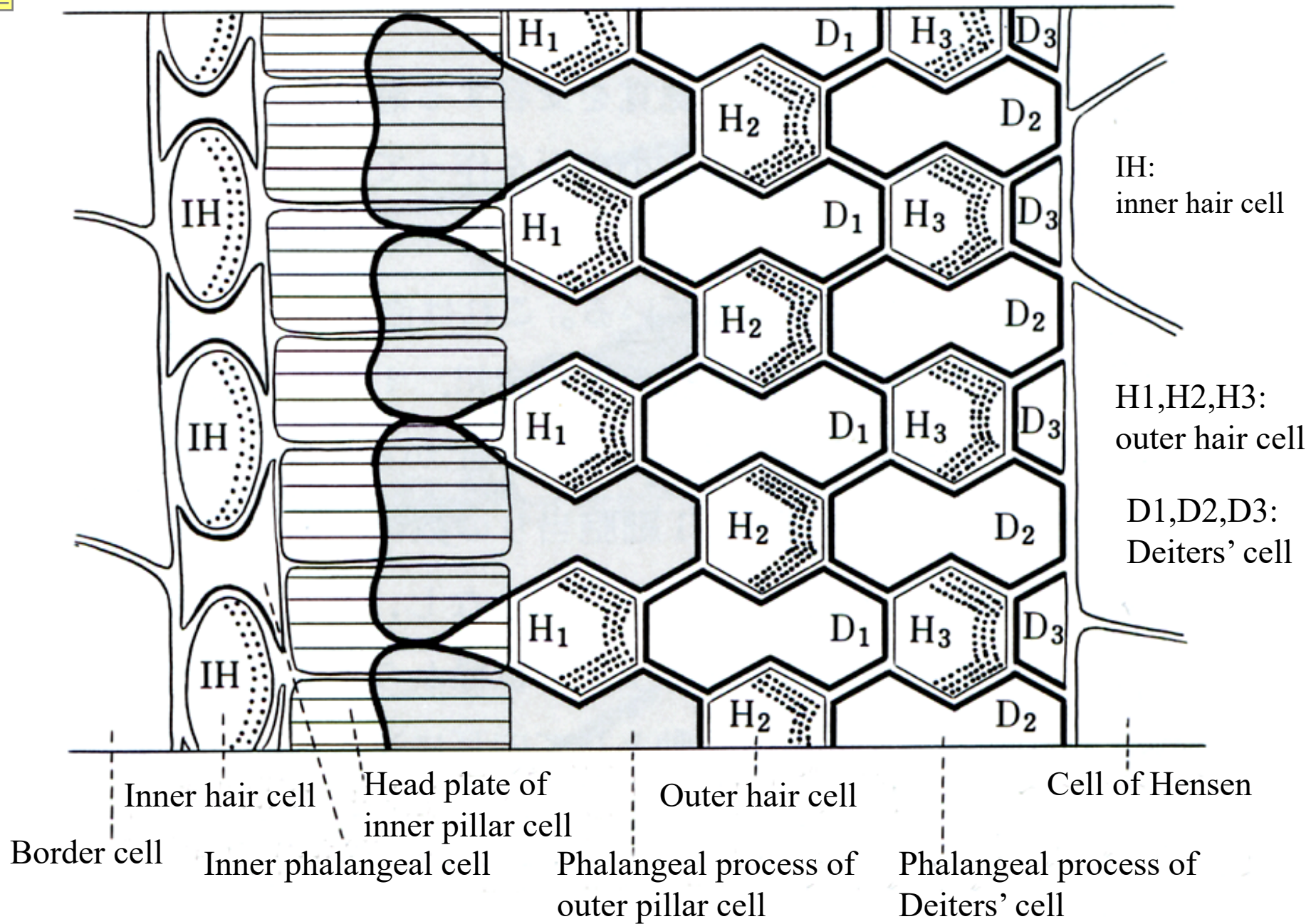


20-09. Organ of Corti. Monkey, H-E stain, x 100.



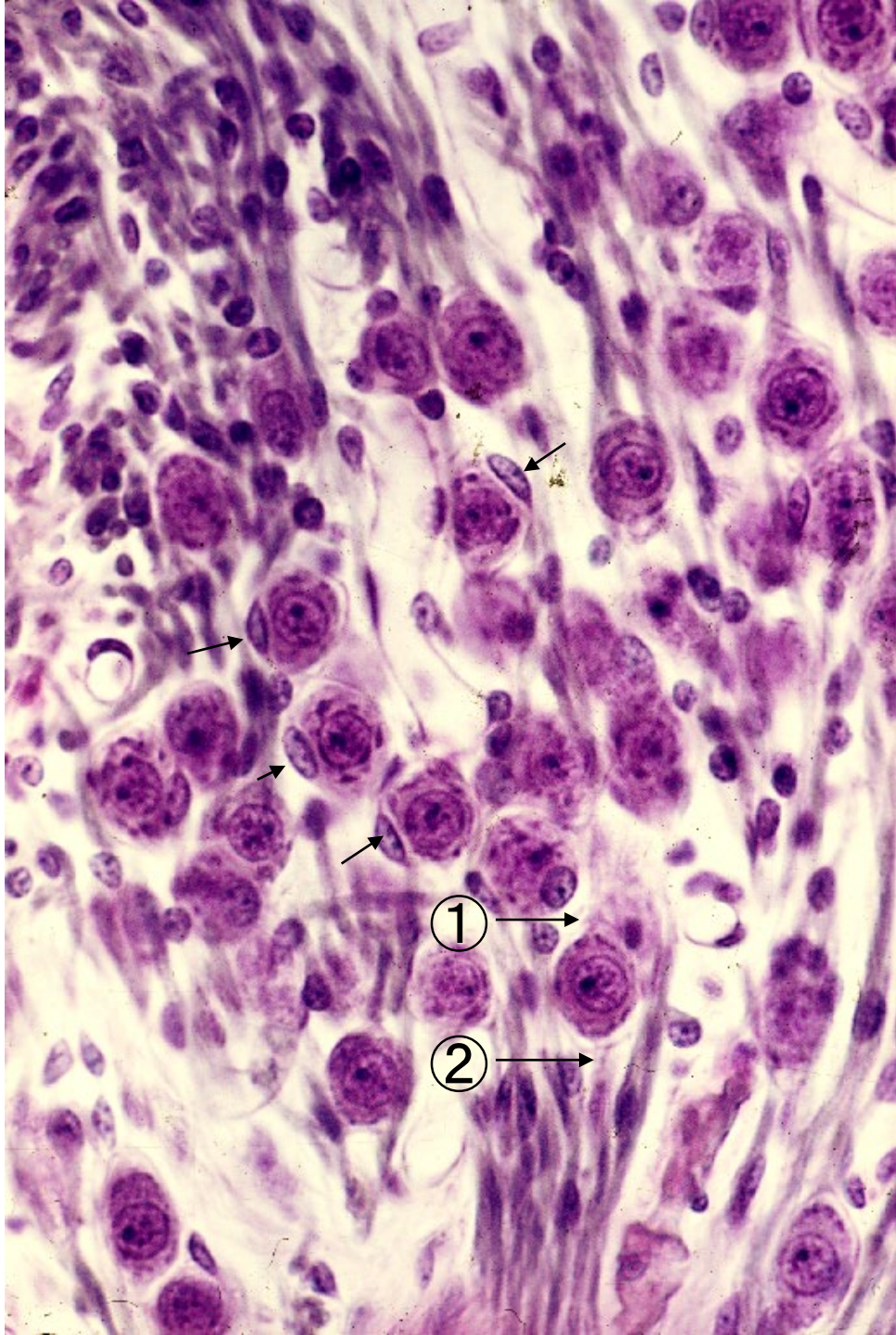
20-10. Scheme showing the structure of spiral organ.





20-11. Reticular membrane (Scheme).





20-12.  
Spiral ganglion.  
Monkey, Held's  
hematoxylin stain,  
x 160.



Bone

Vestibular membrane

Spiral  
ligament

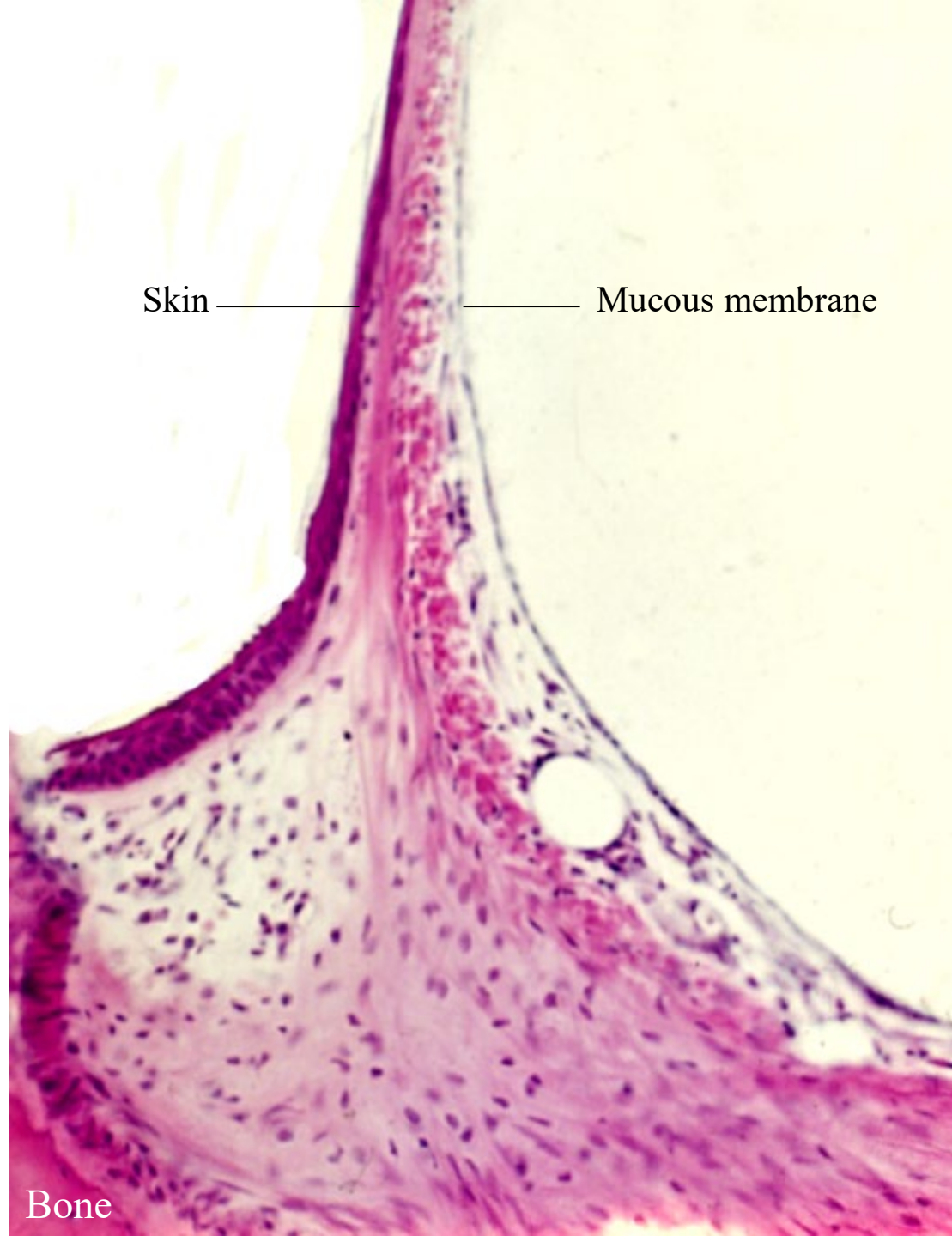
Stria vascularis

Spiral  
ligament

Spiral prominence

20-13.  
Stria vascularis.  
Monkey,  
H-E stain,  
x 100.





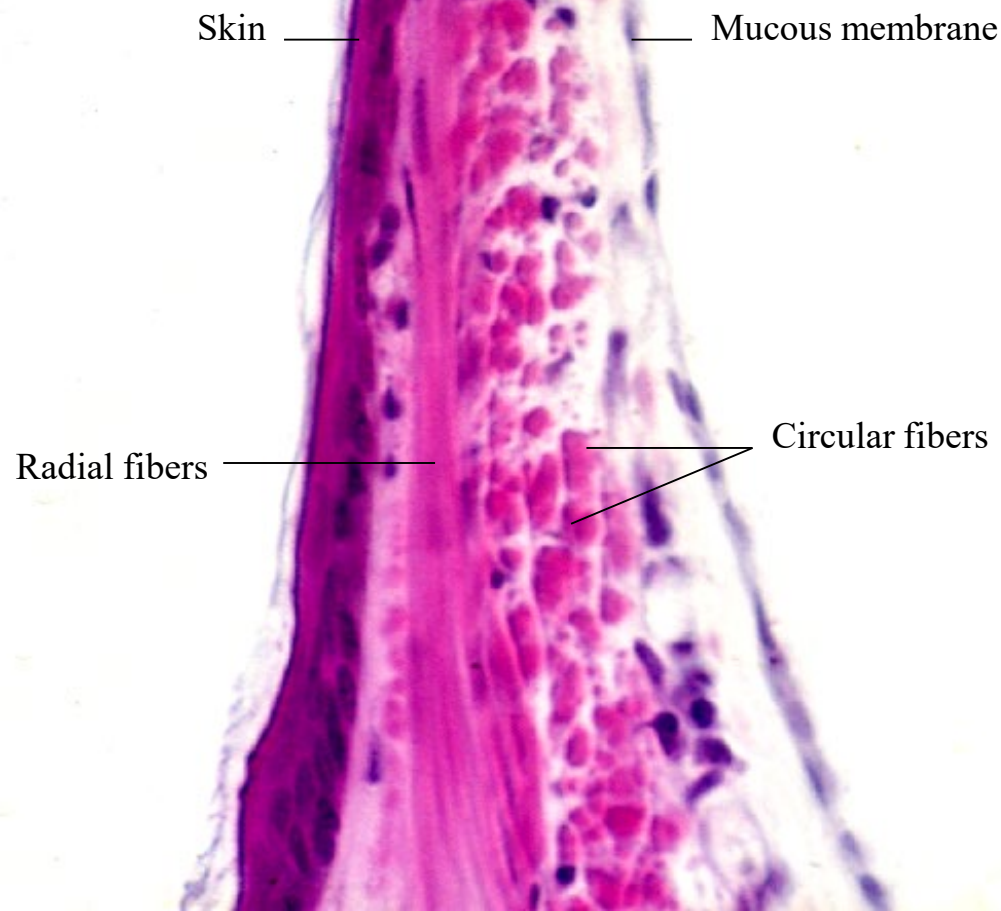
Skin

Mucous membrane

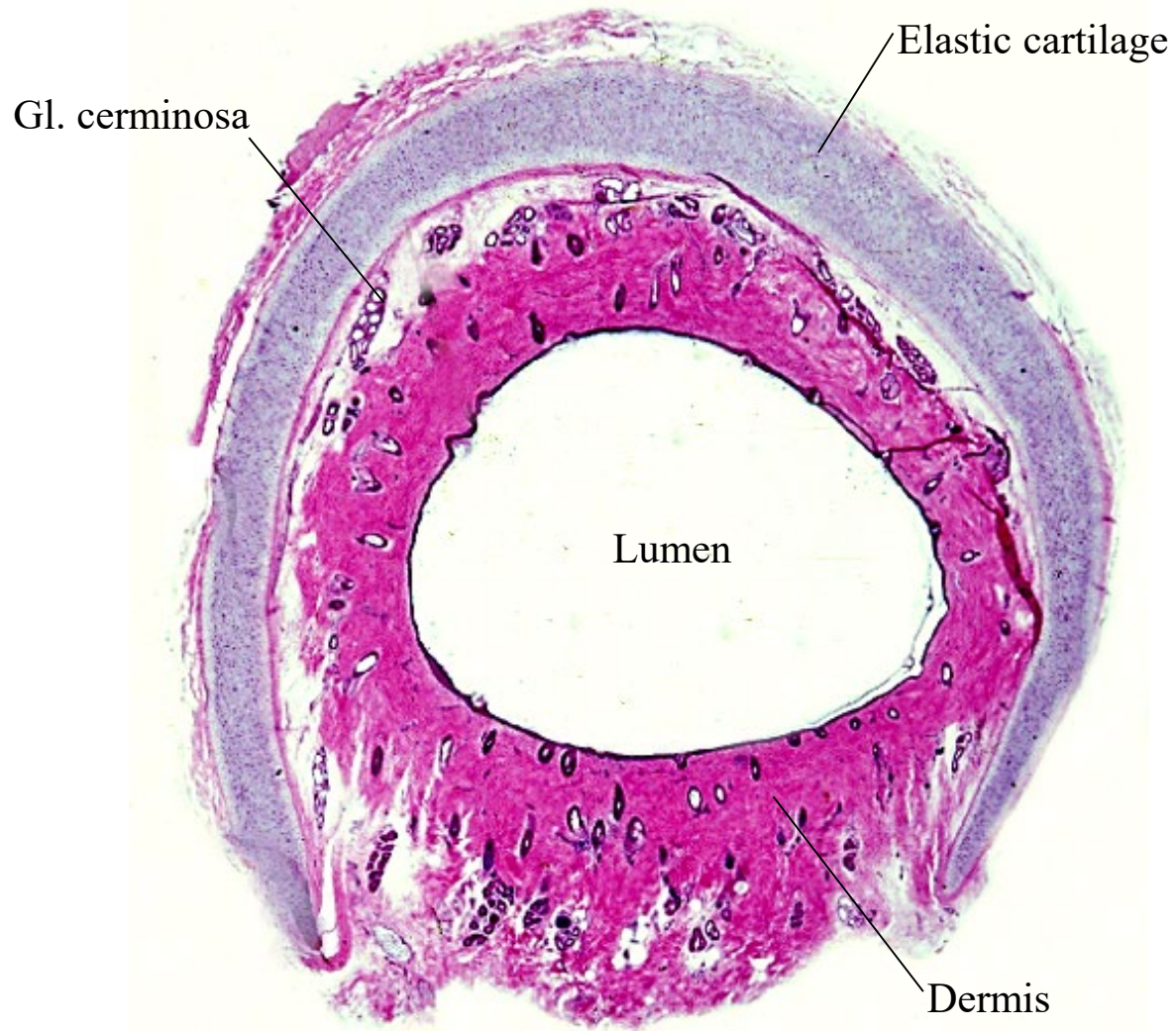
Bone

20-14.  
Tympanic  
membrane 1.  
Monkey,  
H-E stain,  
x 64.





20-15.  
Tympanic  
membrane 2.  
Monkey,  
H-E stain,  
x 160.



20-16  
Tuba auditiva  
externa,  
transverse  
section.  
Monkey,  
H-E stain,  
x 2.5.

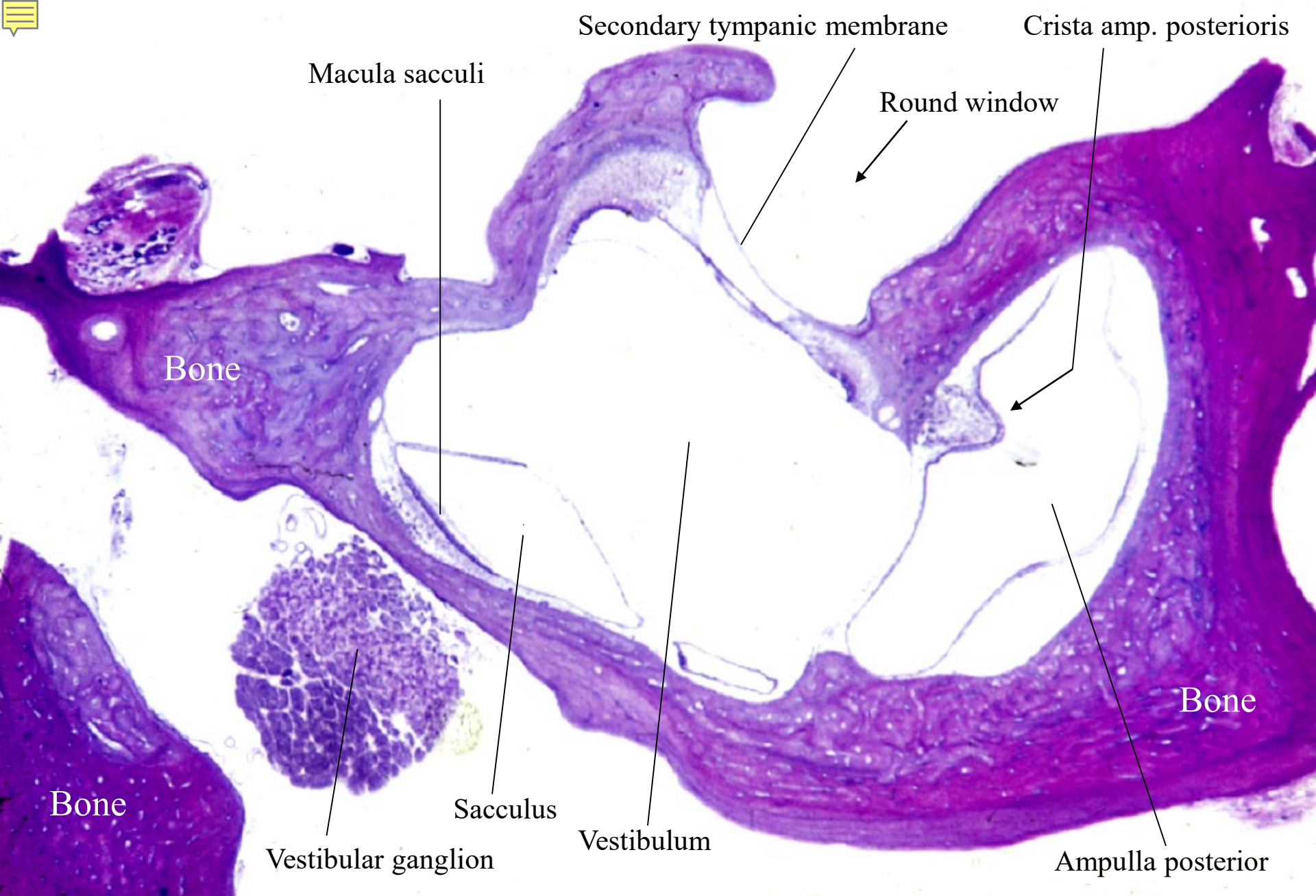


# 20-002

# Vestibular

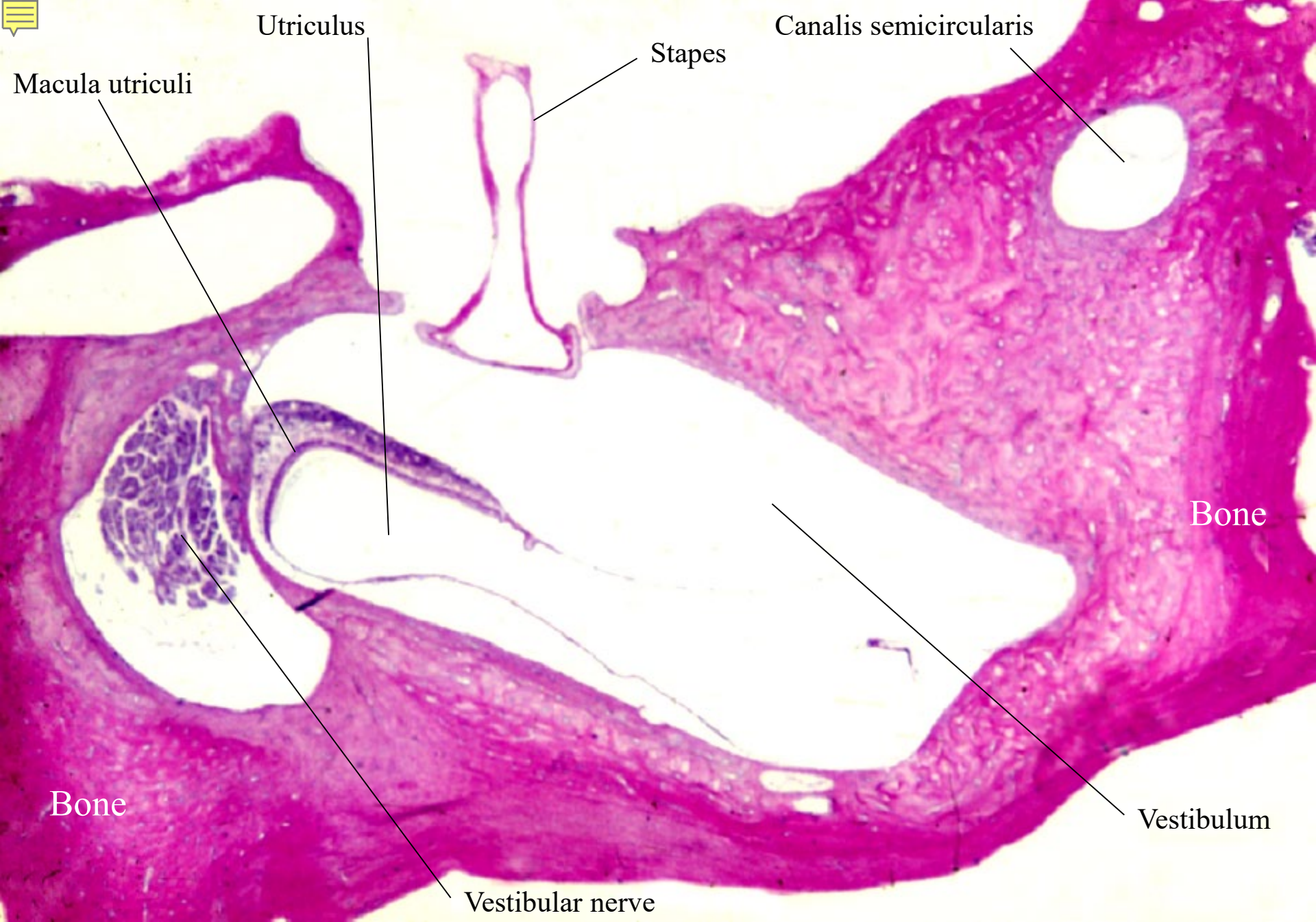
# Organs





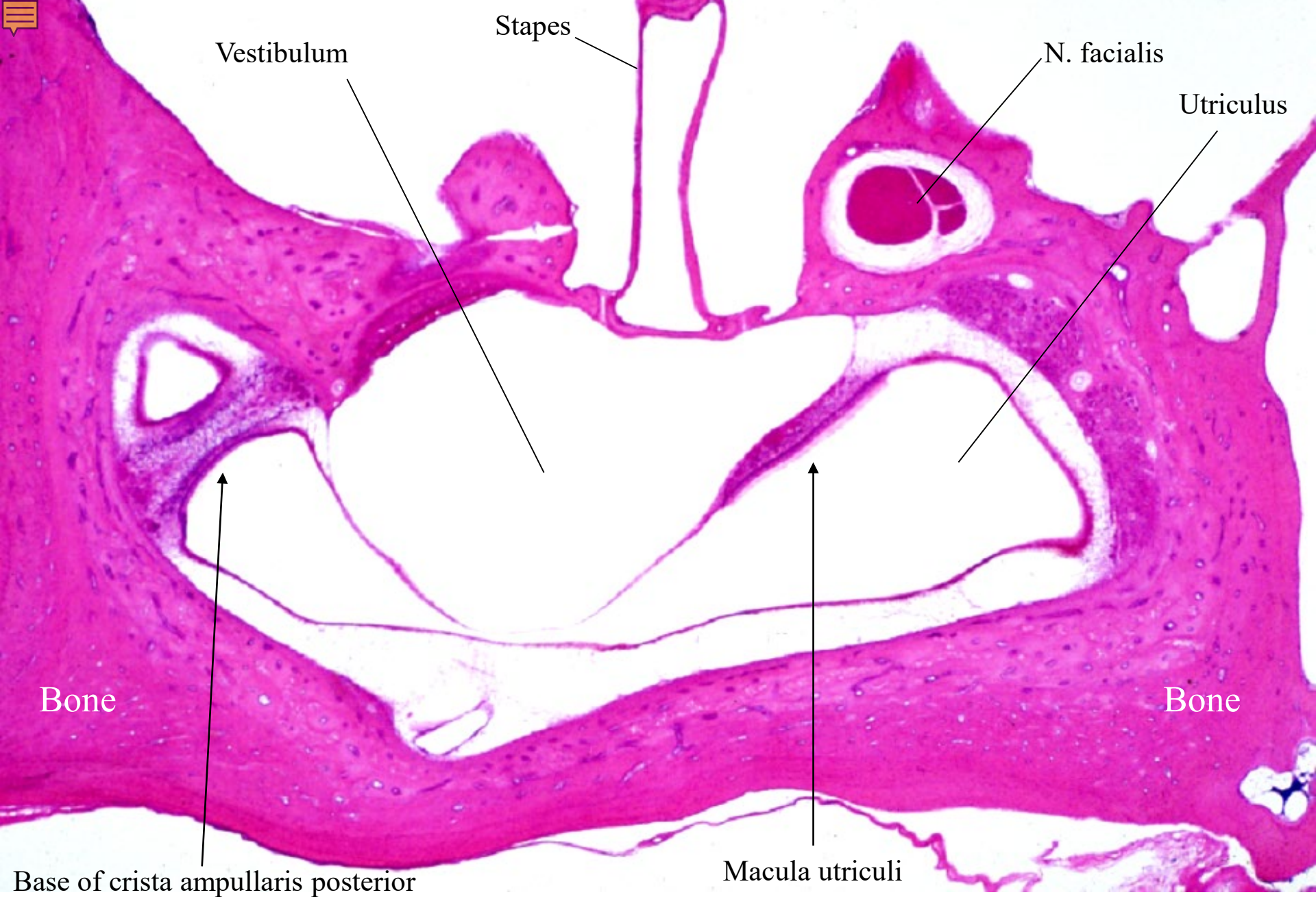
20-17. Vestibulum 1. Sacculus and ampulla semicircularis posterior. Monkey, Held's

hematoxylin stain x 5



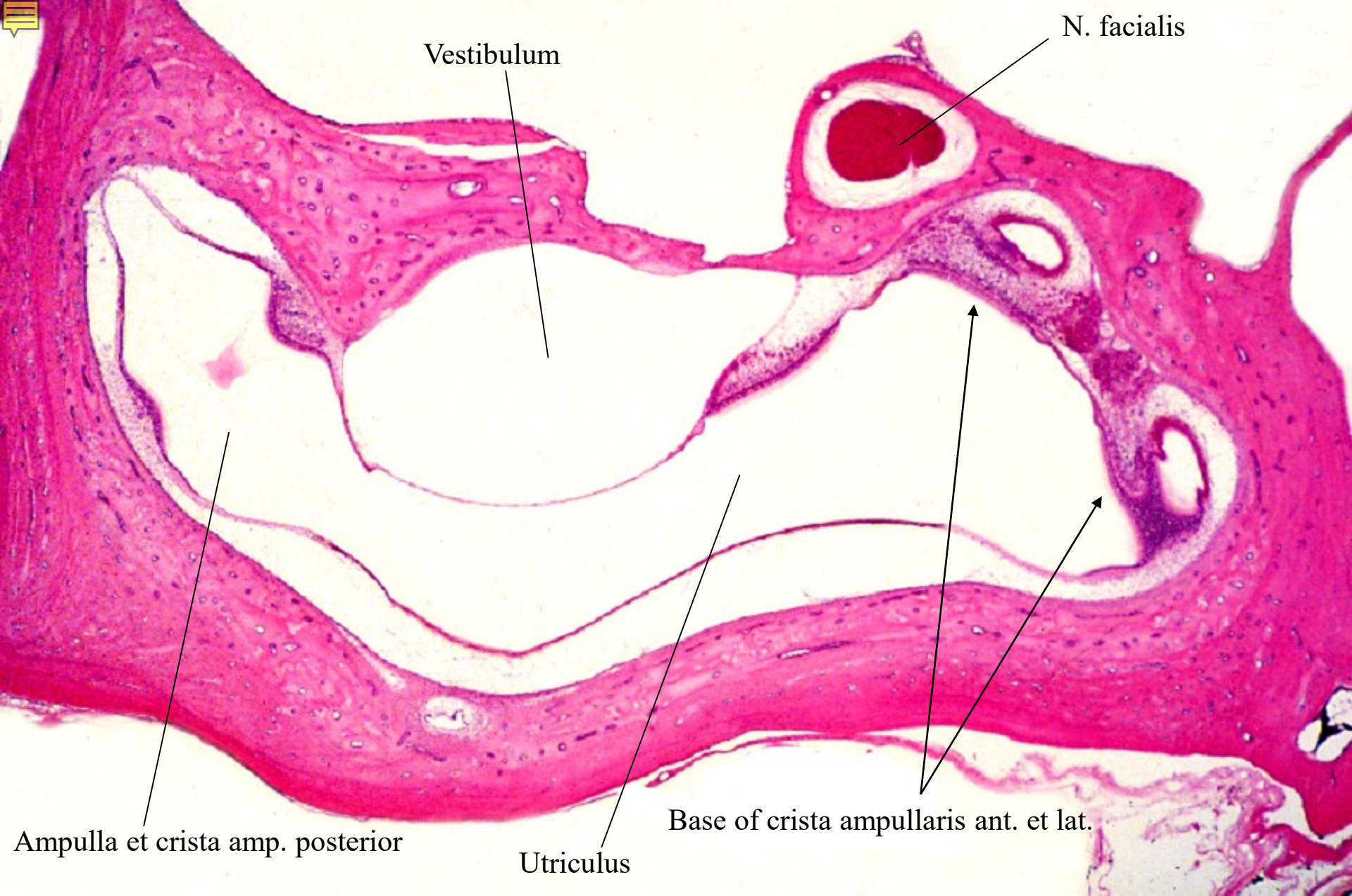
20-18. Vestibulum 2. Stapes and utricle 1. Monkey, H-E stain, x 5.





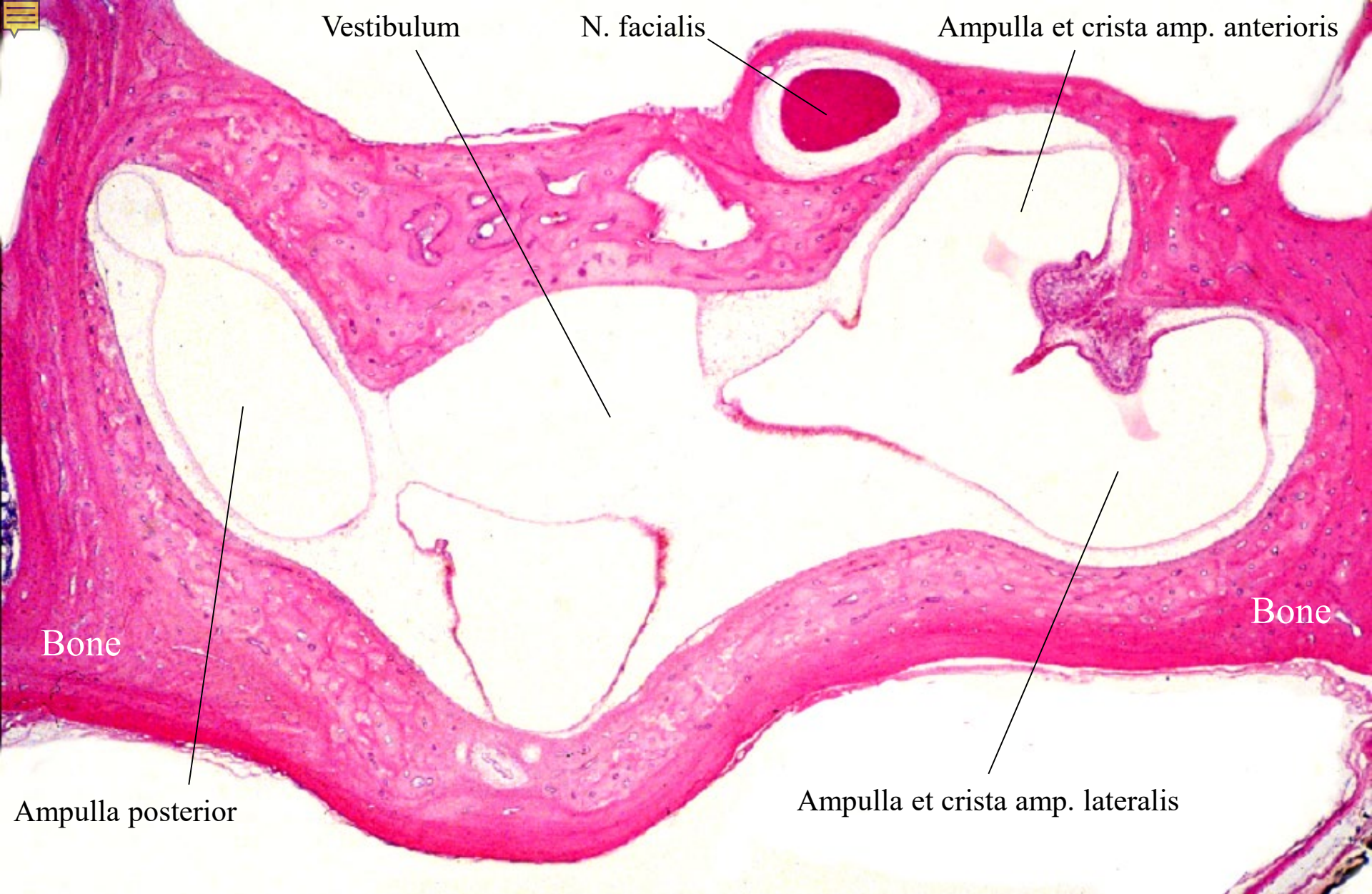
20-19. Vestibulum 3. Stapes and utricle 2. Monkey, H-E stain, x 5.





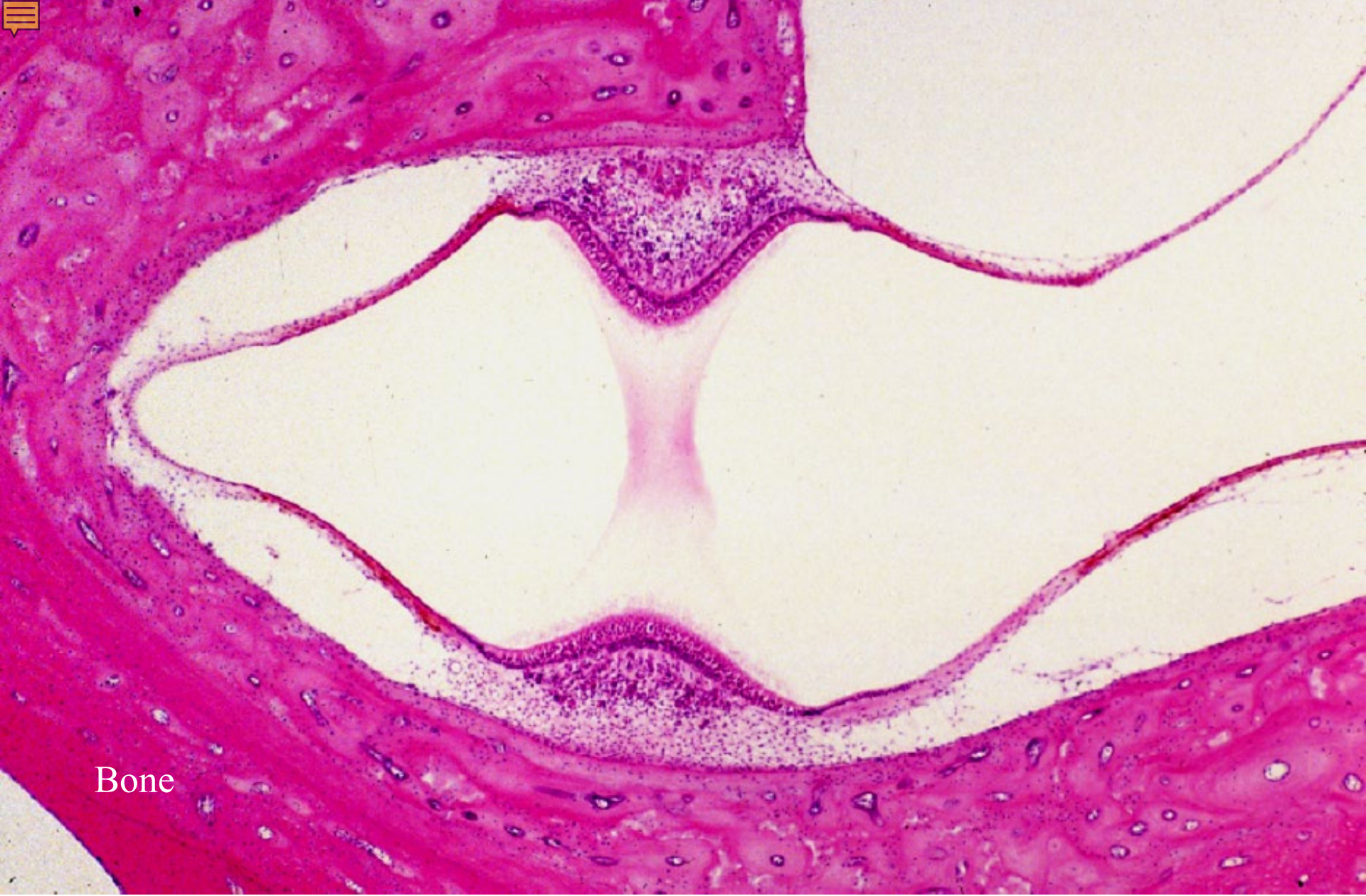
20-20. Vestibulum 4. Macula utriculi and crista ampullaris posterior.  
Monkey, H-E stain, x 5.





20-21. Vestibulum 5. Crista ampullaris anterior et lateralis. Monkey, H-E stain, x 5.

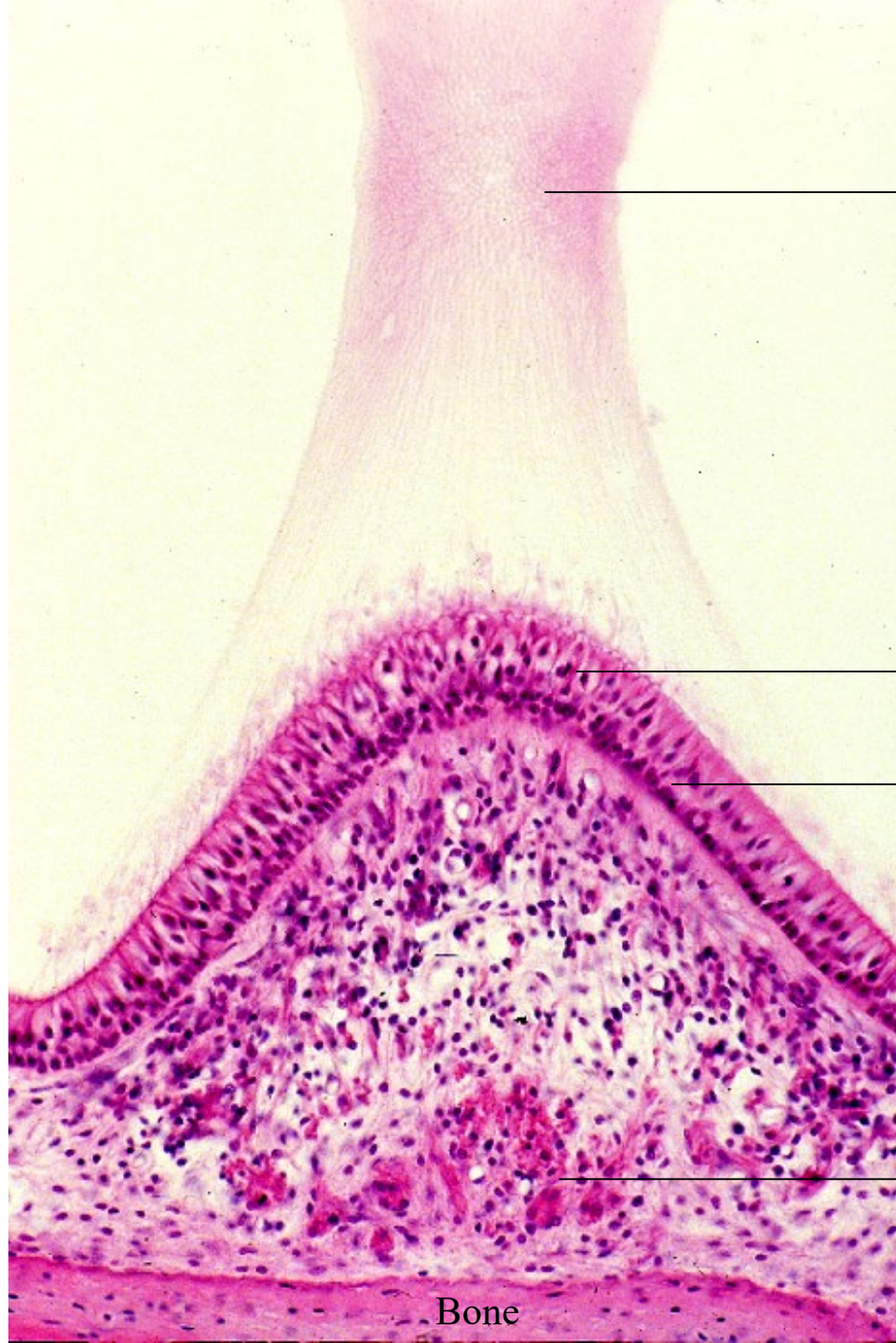




Bone

20-22. Crista ampullaris 1. Monkey, H-E stain, x 13.2.





Cupula

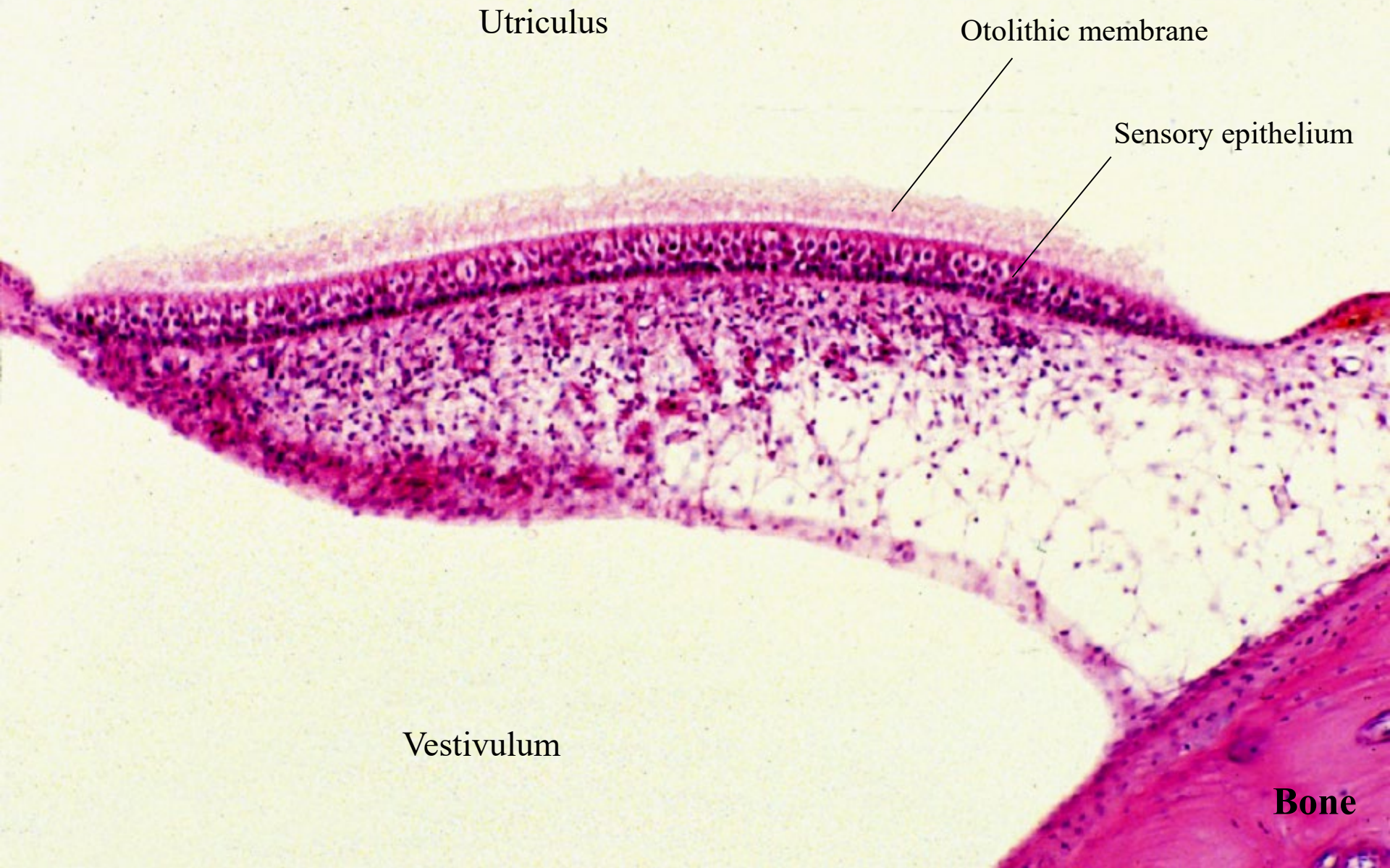
Neuroepithelium

Supporting cells

Nerves

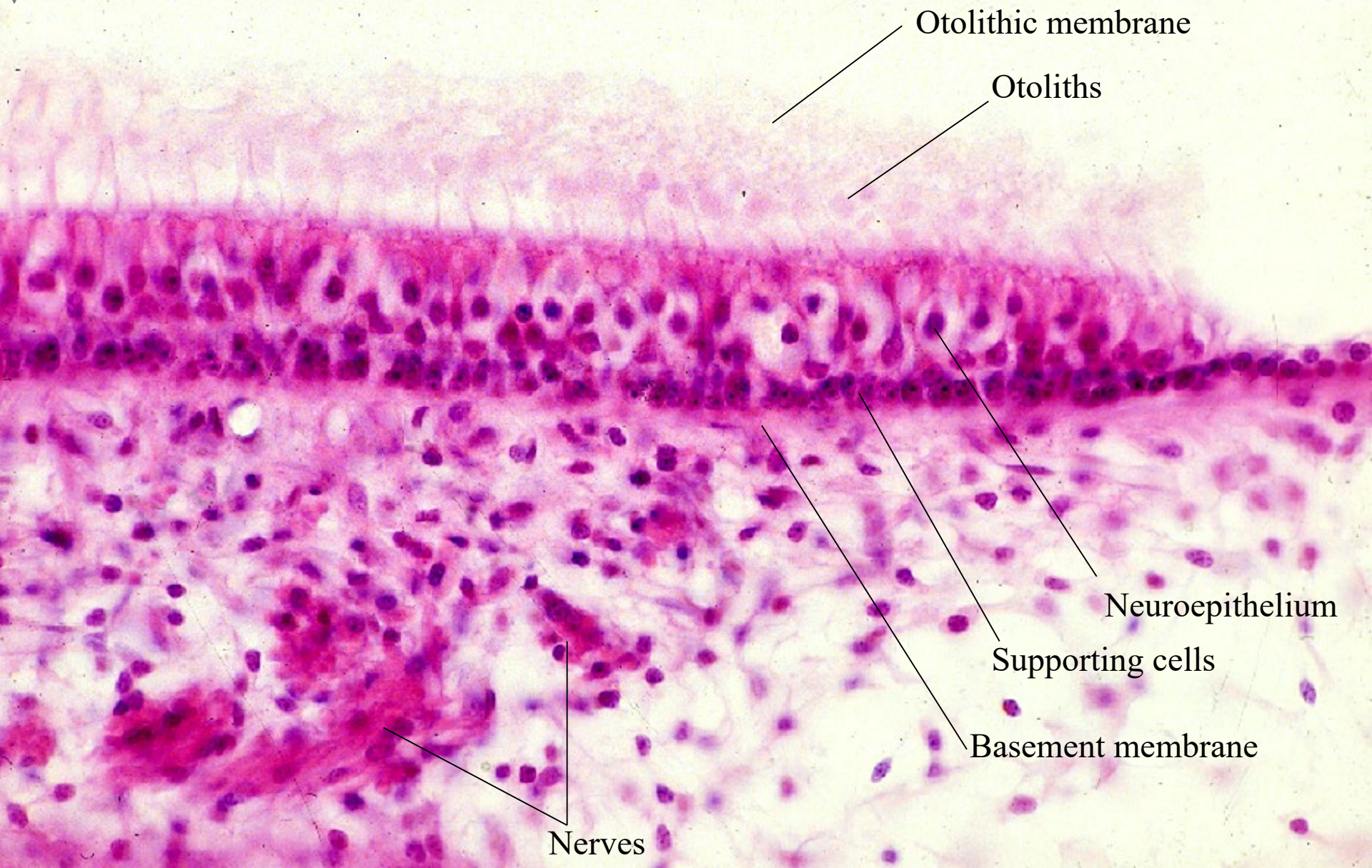
Bone

20-23.  
Crista ampullaris  
2.  
Monkey,  
H-E stain,  
x 50.



20-24. Macula utriculi 1. Monkey, H-E stain, x 33.





20-25. Macula utriculi 2. Money, H-E stain, x 100.





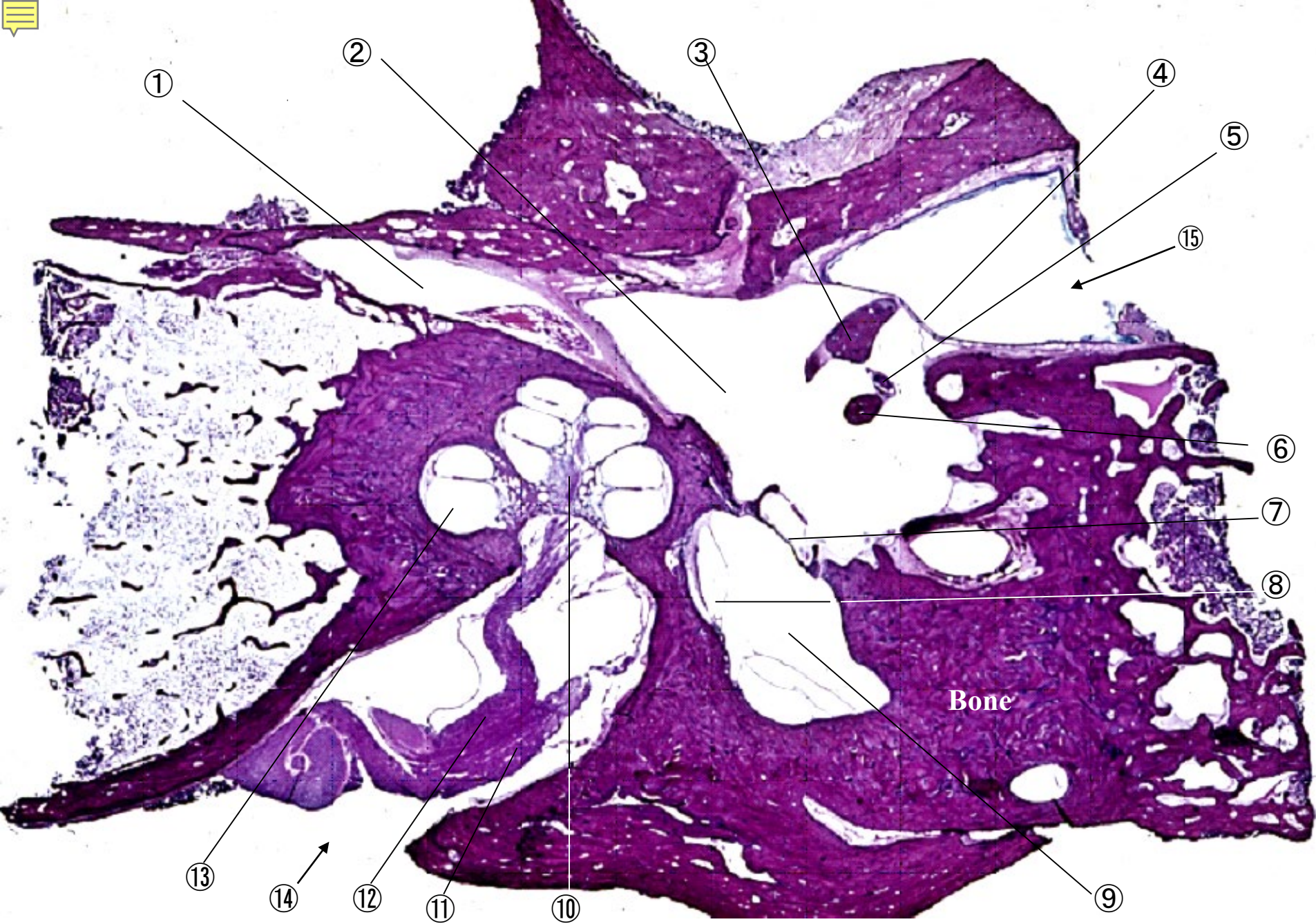
20-003

Horizontal Sections  
of  
Human Temporal  
Bone



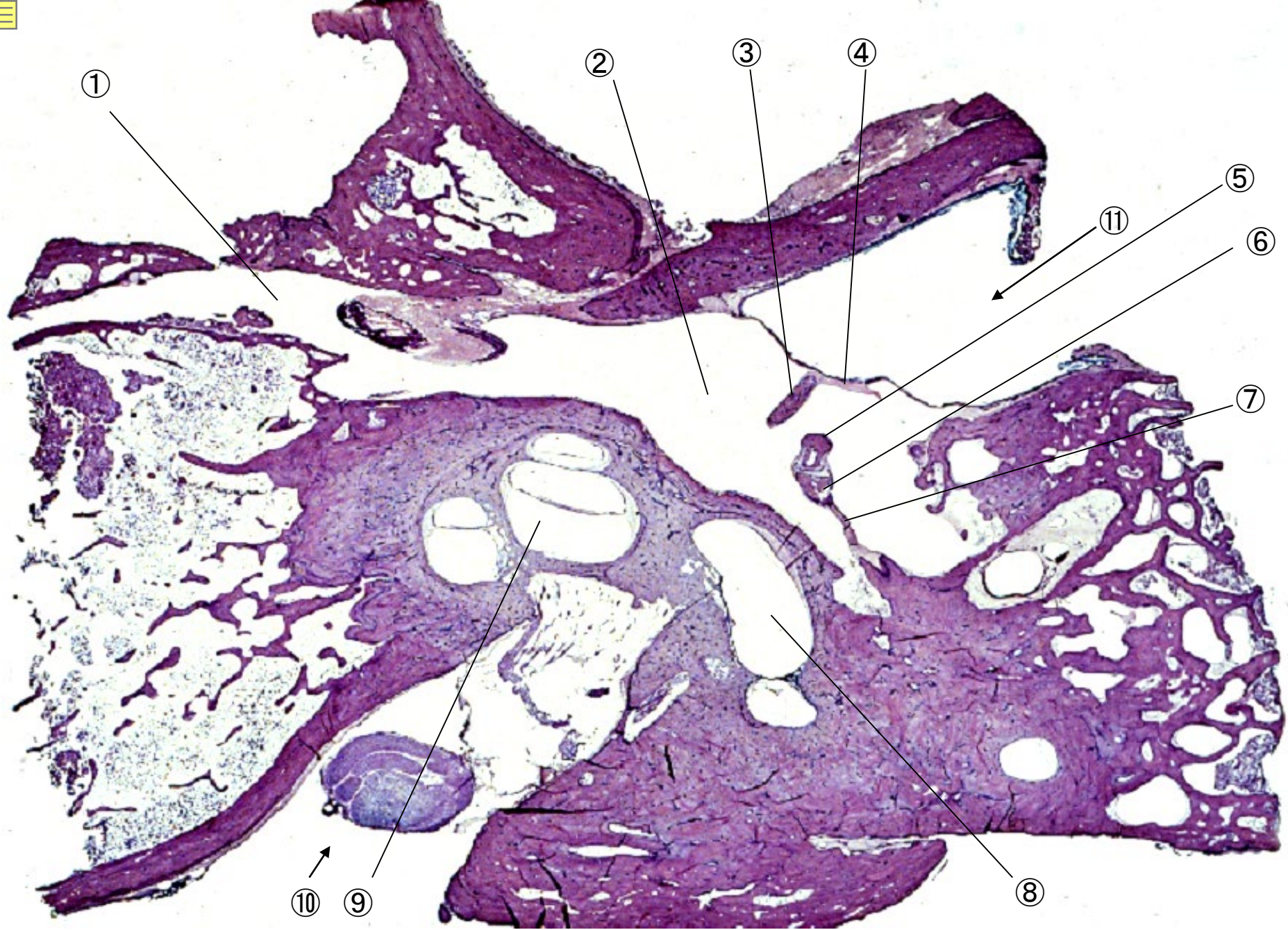
20-26. Horizontal section of human temporal bone 1. H-E stain, x 1.0.





20-27. Horizontal section of human temporal bone 2. H-E stain, x 1.0.





20-28. Horizontal section of human temporal bone 3. H-E stain, x 1.0.





20-29. Horizontal section of human temporal bone 4. H-E stain, x 1.8.